

Accepted Manuscript

Review

A Qualitative Meta-synthesis of Emergency Department Staff Experiences of Violence and Aggression

Rebecca Angharad Ashton, Lucy Morris, Ian Smith

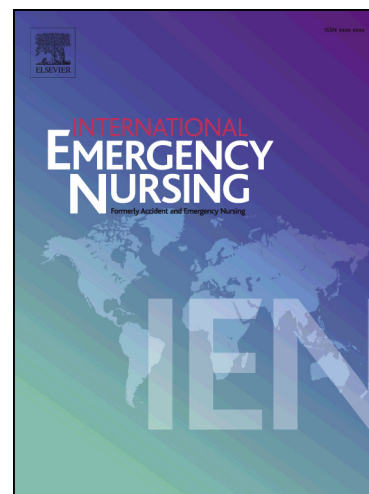
PII: S1755-599X(17)30172-6
DOI: <https://doi.org/10.1016/j.ienj.2017.12.004>
Reference: IENJ 591

To appear in: *International Emergency Nursing*

Received Date: 2 October 2017
Revised Date: 22 November 2017
Accepted Date: 20 December 2017

Please cite this article as: Angharad Ashton, R., Morris, L., Smith, I., A Qualitative Meta-synthesis of Emergency Department Staff Experiences of Violence and Aggression, *International Emergency Nursing* (2017), doi: <https://doi.org/10.1016/j.ienj.2017.12.004>

This is a PDF file of an unedited manuscript that has been accepted for publication. As a service to our customers we are providing this early version of the manuscript. The manuscript will undergo copyediting, typesetting, and review of the resulting proof before it is published in its final form. Please note that during the production process errors may be discovered which could affect the content, and all legal disclaimers that apply to the journal pertain.



**A Qualitative Meta-synthesis of Emergency Department Staff Experiences of
Violence and Aggression**

Word count: 4952

**A Qualitative Meta-synthesis of Emergency Department Staff Experiences of
Violence and Aggression**

Word count: 4952

First author: Dr Rebecca Angharad Ashton

Second author: Dr Lucy Morris

Third and corresponding author:

Name: Dr Ian Smith

Address: Doctorate in Clinical Psychology

Furness College

Lancaster University

Lancaster

LA1 4YG

Email: i.smith@lancaster.ac.uk

Telephone: 01524592282

- (1) Conflict of interest: None
- (2) Ethical Statement: Not applicable
- (3) Funding: This work was supported by Lancaster University Division of Health Research.

ACCEPTED MANUSCRIPT

ABSTRACT

Introduction Patient and visitor violence or aggression against healthcare workers in the Emergency Department (ED) is a significant issue worldwide. This review synthesises existing qualitative studies exploring the first-hand experiences of staff working in the ED to provide insight into preventing this issue.

Method A meta-ethnographic approach was used to review papers.

Results Four concepts were identified: ‘The inevitability of violence and aggression’; ‘Staff judgments about why they face violence and aggression’; ‘Managing in isolation’; and ‘Wounded heroes’.

Discussion Staff resigned themselves to the inevitability of violence and aggression, doing this due to a perceived lack of support from the organisation. Staff made judgements about the reasons for violent incidents which impacted on how they coped and subsequently tolerated the aggressor. Staff often felt isolated when managing violence and aggression. Key recommendations included: Staff training in understanding violence and aggression and clinical supervision.

Conclusions Violence and aggression in the ED can often be an overwhelming yet inevitable experience for staff. A strong organisational commitment to reducing violence and aggression is imperative.

Keywords: Workplace Violence; Aggression; Emergency Services; Emergency Department; Health Personnel; Qualitative Studies

INTRODUCTION

Violence against healthcare workers has been considered a significant problem in the United Kingdom (UK) and worldwide [1,2]. The latest UK statistics demonstrated that there were 1,343,464 total reported assaults on National Health Service (NHS) staff in the last year [3]. A systematic literature review of patient and visitor violence in general hospitals from multiple countries showed that on average 50 per cent of healthcare staff reported experiencing verbal abuse and 25 per cent had experienced physical abuse [4].

Violence and aggression against staff has been documented as a significant problem in EDs specifically [5]. In one study conducted in Australia, 70 per cent of nurses working in two EDs reported that they had experienced violence in the previous five months [6]. One recent review of studies across 18 countries showed significant discrepancy between staff reports of the incidence of both verbal (21-82 per cent) and physical aggression (13-79 per cent) in the ED [7]. This suggests that rates of verbal and physical aggression in the ED vary greatly internationally.

Research has highlighted the significant consequences of patient and visitor violence against staff. Experiencing violence and aggression can lead to staff responses including anger, fear or anxiety, post-traumatic stress 'symptoms', guilt, self-blame and shame [8]. Direct physical injury is also a common consequence of assaults on staff [4]. Violence and aggression against ED nurses reduces work productivity and quality of patient care [9], which in turn increases the costs to the organisation [10], and possible recruitment problems [11].

Nurses are subjected to verbal and physical abuse so frequently in some EDs that it has now arguably become an accepted part of the job [12]. The normalisation of violence in the workplace impacts on incident reporting. Chronic under-reporting of violent incidents in EDs has been well-documented both in Australia and worldwide,

with reasons for under-reporting including: a lack of policy and procedure; feeling discouraged to report by management; a lack of follow-up [13]; fear of being negatively judged; fear of vendetta, and lack of reporting systems [7]. Pich et al. [12] have argued that the normalisation of patient and visitor violence can become embedded within organisational culture which inhibits the implementation of effective preventative strategies.

In the UK, preventative strategies have been environmentally focussed, such as alarms, security presence or metal detectors. Another strategy adopted in several countries is the zero tolerance policy, which stipulate that specific actions or behaviours will not be accepted; however, the effectiveness of this approach is questionable [14]. In fact, few studies exist which assess the effectiveness of any interventions aimed at reducing violence in EDs [15], with reviews being inconclusive due to design issues, difficulty defining violence and a paucity of papers [16].

There are also few studies examining first-hand experiences of healthcare staff dealing with violence and aggression in the ED, despite such accounts having the potential to suggest novel ways of preventing violence. Existing quantitative reviews in this area have focused on simply describing the phenomenon [5], whereas qualitative methodologies can be useful in exploring perspectives [17]. However, there are no known qualitative reviews exploring the experience of violence and aggression in staff working in the ED. Synthesising studies across countries and contexts can offer greater understanding about the common factors which influence the experience of violence and aggression in the ED. The aim of this review is therefore, to synthesise qualitative studies exploring staff experiences of violence and aggression in EDs.

METHOD

Search strategy

A systematic search across four databases (CINAHL, PsycINFO, Pubmed and Web of Science) was conducted. Four concepts were utilised: ‘staff’; ‘violence and aggression’; ‘accident and emergency’; and ‘qualitative’. Where available for each database, a free text search and a search using subject terms or Medical Subject Headings (MeSH) was conducted independently and the results combined. See Appendix 1-A for detail of the final search strategy.

The following inclusion criteria were utilised:

- Papers written or available in English
- Studies using phenomenological qualitative approaches (either solely or as part of a mixed-methods design)
- Studies reporting on patient or visitor violence or aggression
- Studies exploring experiences of any staff member (medical and clerical) working in the ED or triage

In this review, violence or aggression was defined as “a range of behaviours or actions that can result in harm, hurt or injury to another person, regardless of whether the violence or aggression is behaviourally or verbally expressed, physical harm is sustained or the intention is clear.” [2]. The definition of ED used was “a health care setting in which patients may receive accident and emergency services and initial, stabilising treatment for medical, surgical and/or mental health care” [5].

Papers were excluded if the study: used non-phenomenological qualitative approaches; explored any experiences that were not related to violence and aggression; explored views of anyone who did not work in the department unless the paper reported

data for department staff separately; focused on aggression that was sexual, stalking or not related to physical or verbal assault.

Initially 3603 papers were identified. Once duplicates were removed, titles and abstracts of the papers were reviewed. This resulted in 52 papers which were reviewed in full against the inclusion criteria. A further 40 papers were excluded including one paper by Luck, Jackson and Usher [18] due to reporting the same data as Luck, Jackson and Usher [19]. A hand search of reference sections of the full papers was also completed, however this resulted in no additional papers being identified. A total of 12 papers met the inclusion criteria and were included in the meta-synthesis. See Figure 1 for a Preferred Reporting Items for Systematic Reviews and Meta-Analyses (PRISMA) flow diagram of the process [20].

Insert Figure 1 here

Characteristics of included studies

All included papers (See Table 1) reported data from hospital EDs. All of the studies interviewed registered nurses, with three studies also interviewing other staff in the department.

Critical appraisal of papers

It has been argued that study quality can impact on the overall meta-synthesis, with better quality papers contributing more to the results [21]. However, a low score on an appraisal tool may be more indicative of reporting quality, which can be influenced by

word limits rather than the actual research procedure [21]. In our review, quality appraisal was used to understand the strengths and weaknesses of the studies to minimise potential bias rather than as a tool for exclusion.

The Critical Appraisal Skills Programme (CASP) [22] measures quality of papers across ten domains that are considered vital in qualitative research. All 12 papers were assessed with the CASP [22] using the three-point rating system developed by Duggleby et al. [23]. See Table 2 for a summary of scores for each paper.

Insert Table 1 and 2 here

Analysis and synthesis

Noblit and Hare's guidance for synthesizing qualitative literature [24] was followed to complete the meta-synthesis, alongside a worked example adapted for health research [25]. See Appendix 1-B for details of the analysis process.

Reflexivity

The authors are clinical psychologists with no prior experience of working within an ED. It is necessary to acknowledge that the findings represent the authors' own interpretation of the studies and for this reason, an audit trail was kept to ensure transparency of synthesis and interpretation.

RESULTS

Four core concepts emerged from this meta-synthesis: ‘The inevitability of violence and aggression’, ‘Staff judgments about why they face violence and aggression’, ‘Managing in isolation’ and ‘Wounded heroes’.

The inevitability of violence and aggression

Narratives conveyed a sense that staff had resigned themselves to the inevitability of violence and aggression in the ED due to the frequency of incidents and a lack of perceived preventative measures and consequences from the organisation.

Violence and aggression was experienced as a regular occurrence in the ED, with one author explicitly noting that ‘The idea of violence ... was recurrent and consistent in most interviews’ [26]. This led to staff’s ‘resignation to violence’ where violence and aggression was experienced as inevitable, such as one participant’s view was that “...it seems like an inevitable part of the situation...” [27].

When employers’ preventative and reactive strategies, such as security presence, panic alarms and zero tolerance policies were perceived as not being consistently implemented then this also appeared to exacerbate the feeling that violence and aggression should be tolerated by staff:

[The signs stated] ‘we won’t tolerate violence, acting out, threats or cursing.’ The sign also stated that if you acted in any of these ways, you were going to be escorted out by security and police. I have yet to see this happen. I finally asked if we were ever going to act on these signs and I was told that basically they were just put up for show [28]

A perceived lack of consequences and response from the organisation and police during incidents and towards the perpetrators of abuse also appeared to demonstrate that

violence and aggression was tolerated in the ED “Most irritating point, that riles me, is that the Trust states that they won’t tolerate aggressive behaviour but don’t back up the individual” [29]. Inadequate incident reporting procedures also contributed to staff’s perceptions that preventing violence and aggression was not an organisational priority “people can swear at us, spit at us, bite at us...try and hurt us and nobody puts an incident report in” [30].

Staff judgments about why they face violence and aggression

Staff made judgements about the reasons for violence and aggression which appeared to help them to cope. Violence and aggression was judged depending on patient’s capacity to control their behaviour. Where a person’s capacity to act in a rational manner was reduced due to a physical health or psychosocial issue, staff tended to absolve patients of blame (“If the patient has dementia that’s a bit different than a drunk patient or just a patient angry about waiting time” [19]). Staff were less tolerant towards perpetrators of violence or aggression when their presentation at EDs was regarded as not ‘legitimate’ “... take a look at yourself, you know you’re not really that sick. You’re here with a sore toe, there’s people dying next door” [19].

One author identified that few staff acknowledged their role in precipitating violence and aggression, with many being unaware of signs of increasing aggression ‘Cues or precursors to violence were often missed or ignored in nurses’ narrative accounts’ [28]. This sometimes led to violence being seen as an injustice, bringing about strong feelings of anger and rage “I want to scream and say how dare you” [31]. It was also harder for staff to understand why they had been subjected to violence and aggression when they were trying to help “...how could you do that? Tell me why. I did

everything I could, even more than I was supposed to, and you turned violent. Why?"

[27].

Managing in isolation

Narratives portrayed staff managing very challenging circumstances in isolation and in whatever way they could. A sense of abandonment underlay accounts where a physical absence of support staff and managers on the wards meant that staff 'often felt totally alone in a difficult and dangerous situation' [31]. Staff also described feeling uncared for by management "nobody cared at all, not even the head nurse. You feel abandoned" [27]. Without the perceived support of management, staff appeared to attempt any possible method of reducing violence and aggression "you need to ...just be nice to them, do whatever you need to do" [32].

Within the accounts there was significant variety in how staff coped with violence and aggression. Cultural narratives, such as taking a 'stoic' stance to aggression appeared to influence staff in the Singapore study, and in one UK study 'every member of staff spoke of their commitment to working in the ED despite the aggressive incidents' [29]. However, on occasion, staff appeared to struggle to cope with violence and aggression, with some being unable to maintain their professionalism [33], and other staff appearing to minimise or attempt to forget episodes "You have to forget or you won't cope" [33]. Informal debriefing with colleagues was also used to cope with incidents which brought a sense of belonging "Outside the department no one seems to understand what it's really like but your colleagues do" [31].

Wounded heroes

Experiencing violence and aggression appeared to have significant consequences for staff including physical injury and reducing well-being and willingness to do their job. Staff described feeling upset, powerless and frustrated. Many staff discussed feeling fearful of violent patients returning to the ED “I’m always worried whether the person will come back” [26]. The experience of violence and aggression also appeared to have an effect on the ability or willingness of staff to do their job, which was exacerbated by physical injury “I ended up tearing cartilage in my left knee, ended up having surgery” [28]. Consequentially, violent incidents made some staff reluctant to work in the ED “...leaving you a little hesitant to work in triage” [34].

Other staff reported psychological ‘pain’ described as “wounds” or ‘wounded professionalism’ related to particularly difficult incidents [33]. One staff member eloquently shared the long-term impact of violence and aggression:

A female patient...came in to be treated. For some reason this triggered a post traumatic reaction for me. I instantly became very shaky, nauseated, and started crying...I then went to counseling for a couple of months, I think. My biggest hurdle...was [that I felt], and still do, feel like a victim, rather than getting to be in the ‘superman’ role [28]

This illustrates how difficult staff found simultaneously taking on the roles of hero and victim when caring for patients in the ED. Despite being victimised, staff who were not able to prevent violence and aggression experienced feelings of ‘inadequacy and guilt’ [27]. These accounts imply that staff’s sense of self-worth was dependent on their ability to care and ‘rescue’ patients.

DISCUSSION

The aim of this review was to synthesise studies exploring ED staff experiences of violence and aggression.

The first concept 'The inevitability of violence and aggression' illustrated how staff often resigned themselves to the experience of violence and aggression due to the high frequency of violent incidents and a perceived lack of preventative and reactive measures being in place. Previous research has found that a lack of measures such as robust reporting procedures are seen as a sign of an organisation deprioritising effective management of violence and aggression [35]. Our findings are consistent with previous research showing normalisation of violence and aggression against staff in the ED [12]. Seligman's theory of 'learned helplessness' [36] suggests that when people have no perceived control over a negative situation, they give up trying to change the situation. This is thought to lead to depression, which would damage staff well-being in the long-term. Visible signs of the organisation prioritising dealing with violence and aggression might help prevent staff becoming helpless towards violent incidents.

The findings showed that staff appeared to make judgments about the causes of violence and aggression, which were based on the perpetrator's perceived capacity and intention. These judgments affected how staff coped with violence and aggression, and the extent to which they tolerated the perpetrator. The idea that nurses rationalise violence and aggression to cope with it has been documented elsewhere [12,37]. Weiner [38] postulated that peoples' causal attributions about whether behaviour is under the personal control of an individual affects their emotional responses to the behaviour. Markham and Trower [39] found that staff perceived that clients with a diagnosis of Borderline Personality Disorder were more in control of their behaviour than clients with depression or schizophrenia, which meant staff were less sympathetic towards the

former group. This suggests that when challenging behaviour is perceived to be within a person's control, this has a negative impact on staff's sympathy and likelihood of helping. However, it is unclear precisely how staff in the current review responded differently based on their appraisals of violence and aggression which could be explored further in future research.

Very few staff acknowledged any role they may have played in the occurrence of violence and aggression, however research has suggested that ED staff's verbal and non-verbal communication may contribute to violence [40]. Additionally, emotionally depleted staff have been shown to be less tolerant of aggressive behaviour [41]. This suggests that staff may inadvertently trigger violence and aggression due to being unaware of their own role in violent interactions, which has implications for providing staff with greater understanding of their role in difficult incidents with patients.

The 'managing in isolation' concept suggested that staff often felt isolated when managing violence and aggression in the ED, which appeared to impact on their coping strategies. This concept could be understood in terms of attachment theory, which suggests that children's experiences with primary attachment figures form an internal working model for future relationships [42]. Ainsworth, Blehar, Waters and Wall [43] proposed that attachment styles depend on whether the child learnt that the caregiver was available, responsive or helpful when called upon. It has been posited that organisational leader-follower relationships may be influenced by attachment styles [44]. Within this review, it appeared that staff wanted support from management during violent incidents however they perceived that help was not available, which could be experienced as an ambivalent attachment style to front-line staff [43]. Research has shown that attachment styles can have an impact on how staff cope in response to work-

related stress [45], which could offer an explanation for how the absence of management impacted on staff's coping strategies.

The final concept 'wounded heroes' demonstrated the significant impact that violence and aggression can have on staff's emotional and physical well-being and on their willingness to do their job. Previous research has shown that staff experienced a range of emotional responses to violence and aggression including anger, fear, guilt, self-blame and shame [8,46]. Our findings suggest that staff found it difficult to be a 'hero' and a 'victim', as staff's sense of self-worth was based on rescuing patients. This notion is consistent with Bowlby's [47] 'compulsive care-giving' attachment style whereby the person has learnt that the attachment bond is dependent on them giving care rather than receiving it. Some healthcare professionals have been considered to be vulnerable to being 'compulsive caregivers', and this pattern of relating to clients has been considered to contribute to burnout [48]. This style of attachment may also explain why staff can find it difficult to be in the 'victim' role as this places them in the position of needing care. This is a novel finding which may expand our conceptual understanding about staff's experiences of violence and aggression.

Recommendations for clinical practice

The findings showed that staff appeared to passively accept violence and aggression, often when preventative and reactive strategies were inconsistently enforced. One literature review suggested that zero tolerance policies are "largely impractical for clinicians in the ED" [14]. Victorian Health Services in Australia have published specific guidance around managing violence and aggression in acute care settings [49]. This document suggests that a standardised organisational response to violence and aggression is necessary through the use of a coding system, where different coloured

codes refer to different levels of violent threat. As part of this response, five core principles for staff training were recommended, for instance tailoring training to staff groups.

The findings suggested that staff may be drawn into patterns of ‘compulsive caregiving’, which in psychological therapy is referred to as countertransference. Supervision can be an effective way of understanding and exploring countertransference [51], and has been shown to be beneficial for nurses through providing peer support and stress relief, promoting professional accountability and knowledge development [52].

Limitations and future research

The results of this review are inevitably reflective of the authors’ own preconceptions and experiences, which may have differed had more authors been involved in the meta-synthesis. One particular strength of this review was the inclusion of papers from several different countries which potentially offers an international viewpoint of violence and aggression in the ED.

The precise mechanisms by which staff responded when they negatively appraised violence and aggression remain unclear. Future research should explore staff perceptions of their responses and behaviour following violent incidents. This could be achieved by conducting a mixed-methods study, through the use of questionnaires asking staff about their attributions, emotional response and helping behaviours alongside observation of ED staff after incidents.

CONCLUSIONS

This review provides an international perspective on frontline staff experiences of violence and aggression in the ED. A significant finding was that staff appraisals of the

causes of violence and aggression affected how they coped and responded to patients which has implications for further escalation of violent incidents in the ED. Staff also struggled to be in the 'victim' role when caring for violent patients, which could negatively impact on them seeking care from staff and the wider organisation. A strong organisational commitment to reducing violence and aggression is needed through a focus on staff training and clinical supervision.

REFERENCES

- [1] Lau JB, Magarey J, McCutcheon H. Violence in the emergency department: A literature review. *Aust Emerg Nurs J* 2004;7:27–37. doi:10.1016/S1328-2743(05)80028-8.
- [2] British Psychological Society, The Royal College of Psychiatrists. Violence and aggression short-term management in mental health, health and community settings, <https://www.nice.org.uk/guidance/ng10/resources/violence-and-aggression-shortterm-management-in-mental-health-health-and-community-settings-pdf-1837264712389> 2015 [accessed 01.12.16].
- [3] NHS Protect. Reported physical assaults on NHS staff figures. Physical assaults against NHS staff 2015/16, http://www.nhsbsa.nhs.uk/Documents/SecurityManagement/Reported_Physical_Assaults_2015-16_Final.pdf 2015 [accessed 01.12.16].
- [4] Hahn S, Zeller A, Needham I, Kok G, Dassen T, Halfens RJG. Patient and visitor violence in general hospitals: A systematic review of the literature. *Aggress Violent Behav* 2008;13:431–41. doi:10.1016/j.avb.2008.07.001.
- [5] Taylor JL, Rew L. A systematic review of the literature: workplace violence in the emergency department. *J Clin Nurs* 2011;20:1072. doi:10.1111/j.1365-2702.2010.03342.x.
- [6] Crilly J, Chaboyer W, Creedy D. Violence towards emergency department nurses by patients. *Accid Emerg Nurs* 2004;12:67–73. doi:10.1016/j.aen.2003.11.003.
- [7] Pourshaikhian M, Gorji HA, Aryankhesal A, Khorasani-Zavareh D, Barati A. A systematic literature review: Workplace violence against emergency medical services personnel. *Arch Trauma Res* 2016;5:213–224. doi:10.5812/at.28734.
- [8] Needham I, Abderhalden C, Halfens RJG, Fischer JE, Dassen T. Non- somatic effects of patient aggression on nurses: a systematic review. *J Adv Nurs* 2005;49:283–96. doi:10.1111/j.1365-2648.2004.03286.x.
- [9] Gates DM, Gillespie GL, Succop P. Violence against nurses and its impact on stress and productivity. *Nurs Econ* 2011;29:59–66.
- [10] Mechem CC, Dickinson ET, Shofer FS, Jaslow D. Injuries from assaults on paramedics and firefighters in an urban emergency medical services system. *Prehosp Emerg Care* 2002;6:396–401.
- [11] Jackson D, Clare J, Mannix J. Who would want to be a nurse? Violence in the workplace – a factor in recruitment and retention. *J Nurs Manag* 2002;10:13–20. doi:10.1046/j.0966-0429.2001.00262.x.
- [12] Pich J, Hazelton M, Sundin D, Kable A. Patient- related violence against emergency department nurses. *Nurs Health Sci* 2010;12:268–74. doi:10.1111/j.1442-2018.2010.00525.x.
- [13] Hogarth KM, Beattie J, Morphet J. Nurses' attitudes towards the reporting of violence in the emergency department. *Australas Emerg Nurs J* 2016;19:75–81. doi:10.1016/j.aenj.2015.03.006.
- [14] Wand TC, Coulson K. Zero tolerance: A policy in conflict with current opinion on aggression and violence management in health care. *Australas Emerg Nurs J* 2006;9:163–70. doi:10.1016/j.aenj.2006.07.002.
- [15] Stirling G, Higgins JE, Cooke MW. Violence in A&E departments: a systematic review of the literature. *Accid Emerg Nurs* 2001;9:77–85. doi:10.1054/aen.2000.0204.

- [16] Anderson L, Fitzgerald M, Luck L. An integrative literature review of interventions to reduce violence against emergency department nurses. *J Clin Nurs* 2010;19:2520–30. doi:10.1111/j.1365-2702.2009.03144.x.
- [17] Dixon-Woods M, Fitzpatrick R. Qualitative research in systematic reviews. *BMJ* 2001;323:765. doi:10.1136/bmj.323.7316.765.
- [18] Luck L, Jackson D, Usher K. Conveying caring: Nurse attributes to avert violence in the ED. *Int J Nurs Pract* 2009;15:205–12. doi:10.1111/j.1440-172X.2009.01749.x.
- [19] Luck L, Jackson D, Usher K. Innocent or culpable? Meanings that emergency department nurses ascribe to individual acts of violence. *J Clin Nurs* 2008;17:1071–8. doi:10.1111/j.1365-2702.2006.01870.x.
- [20] Moher D, Liberati A, Tetzlaff J, Altman DG. Preferred reporting items for systematic reviews and meta-analyses: the PRISMA statement. *BMJ* 2009;339:e1000097. doi:10.1136/bmj.b2535.
- [21] Lewin S, Atkins S, Smith H, Engel M, Fretheim A, Volmink J. Conducting a meta-ethnography of qualitative literature: Lessons learnt. *BMC Med Res Methodol* 2008;8:21. doi:10.1186/1471-2288-8-21.
- [22] Public Health Resource Unit. Critical Appraisal Skills Programme: Making sense of evidence, http://docs.wixstatic.com/ugd/dded87_25658615020e427da194a325e7773d42.pdf 2013 [accessed 01.10.16].
- [23] Duggleby W, Holtslander L, Kylma J, Duncan V, Hammond C, Williams A. Metasynthesis of the hope experience of family caregivers of persons with chronic illness. *Qual Health Res* 2010;20:148–58. doi:10.1177/1049732309358329.
- [24] Noblit G, Hare R. *Meta-ethnography: Synthesizing qualitative studies*. 1st ed. United States of America: Sage Publications Inc.; 1988.
- [25] Britten N, Campbell R, Pope C, Donovan J, Morgan M, Pill R. Using meta ethnography to synthesise qualitative research: a worked example. *J Health Serv Res Policy* 2002;7:209–15. doi:10.1258/135581902320432732.
- [26] Lancman S, Mângia E, Muramoto M. Impact of conflict and violence on workers in a hospital emergency room. *Work* 2013;45:519-527. doi: 10.3233/WOR-131638
- [27] Ramacciati N, Ceccagnoli A, Addey B. Violence against nurses in the triage area: An Italian qualitative study. *Int Emerg Nurs* 2015;23:274–80. doi:10.1016/j.ienj.2015.02.004.
- [28] Wolf LA, Delao AM, Perhats C. Nothing changes, nobody cares: Understanding the experience of emergency nurses physically or verbally assaulted while providing care. *J Emerg Nurs* 2014;40:305–10. doi:10.1016/j.jen.2013.11.006.
- [29] Knowles E, Mason SM, Moriarty F. ‘I’m going to learn how to run quick’: exploring violence directed towards staff in the Emergency Department. *Emerg Med J* 2013;30:926-931. doi:10.1136/emered-2012-201329.
- [30] Pich J, Hazelton M, Kable A. Violent behaviour from young adults and the parents of paediatric patients in the emergency department. *Int Emerg Nurs* 2013;21:157–62. doi:10.1016/j.ienj.2012.08.007.
- [31] Hislop E, Melby V. The lived experience of violence in accident and emergency. *Accid Emerg Nurs* 2003;11:5–11. doi:10.1016/S0965-2302(02)00124-8.
- [32] Tan MF, Lopez V, Cleary M. Nursing management of aggression in a Singapore emergency department: A qualitative study. *Nurs Health Sci* 2015;17:307–12. doi:10.1111/nhs.12188.

- [33] D'Aubarede C, Sarnin P, Cornut PL, Touzet S, Duclos A, Burillon C, et al. Impacts of users' antisocial behaviors in an ophthalmologic emergency department--a qualitative study. *J Occup Health* 2016;58:96–106. doi:10.1539/joh.15-0184-FS.
- [34] Pich J, Hazelton M, Sundin D, Kable A. Patient-related violence at triage: A qualitative descriptive study. *Int Emerg Nurs* 2011;19:12–9. doi:10.1016/j.ienj.2009.11.007.
- [35] Ferns T. Recording violent incidents in the emergency department. *Nurs Stand* 2012;26:40–8. doi: 10.7748/ns.26.28.40.s51
- [36] Seligman ME. Learned helplessness. *Annu Rev Med* 1972;23:407–412. doi: 10.1146/annurev.me.23.020172.002203
- [37] Ray MM. The dark side of the job: Violence in the emergency department. *J Emerg Nurs* 2007;33:257–61. doi:10.1016/j.jen.2007.01.015.
- [38] Weiner B. An attributional theory of motivation and emotion. 1st ed. New York: Springer-Verlag; 1986.
- [39] Markham D, Trower P. The effects of the psychiatric label “borderline personality disorder” on nursing staff's perceptions and causal attributions for challenging behaviours. *Br J Clin Psychol* 2003;42:243–56. doi:10.1348/01446650360703366.
- [40] Morphet J, Griffiths D, Plummer V, Innes K, Fairhall R, Beattie J. At the crossroads of violence and aggression in the emergency department: perspectives of Australian emergency nurses. *Aust Health Rev* 2014;38:194–201. doi:10.1071/AH13189.
- [41] Whittington R. Attitudes toward patient aggression amongst mental health nurses in the “zero tolerance” era: associations with burnout and length of experience. *J Clin Nurs* 2002;11:819–25. doi:10.1046/j.1365-2702.2002.00659.x.
- [42] Bowlby J. The making & breaking of affectional bonds. 1st ed. London: Tavistock Publications; 1979.
- [43] Ainsworth MS, Blehar MC, Waters E, Wall, S. Patterns of attachment: a psychological study of the strange situation. Hillsdale, NJ: Lawrence Erlbaum Associates; 1978.
- [44] Popper M, Maysless O, Castelnovo O. Transformational leadership and attachment. *Leadersh Q* 2000;11:267–89. doi:10.1016/S1048-9843(00)00038-2.
- [45] Johnstone M, Feeney JA. Individual differences in responses to workplace stress: the contribution of attachment theory. *J Appl Soc Psychol* 2015;45:412–24. doi:10.1111/jasp.12308.
- [46] Edward K, Ousey K, Warelow P, Lui S. Nursing and aggression in the workplace: a systematic review. *Br J Nurs* 2014;23:653–9. doi:10.12968/bjon.2014.23.12.653.
- [47] Bowlby J. The making and breaking of affectional bonds. I. Aetiology and psychopathology in the light of attachment theory. An expanded version of the Fiftieth Maudsley Lecture, delivered before the Royal College of Psychiatrists, 19 November 1976. *Br J Psychiatry J Ment Sci* 1977;130:201–210.
- [48] Berry K, Drake R. Attachment theory in psychiatric rehabilitation: informing clinical practice. *Advances in psychiatric treatment* 2010;16:308–15. doi: 10.1192/apt.bp.109.006809.
- [49] Knott J, Gerdst M, Daniel C, Dearie V, Holsheimer A. Violence prevention and management: Standards for development of training and organisational responses in Victorian health services 2017.

- [50] Davies B, Griffiths J, Liddiard K, Lowe K, Stead L. Changes in staff confidence and attributions for challenging behaviour after training in positive behavioural support within a forensic medium secure service. *J Forensic Psychiatry Psychol* 2015;10:1–15. doi:10.1080/14789949.2015.1072574.
- [51] Stewart L. Relational needs of the therapist: Countertransference, clinical work and supervision. Benefits and disruptions in psychotherapy. *Int J Integr Psychother* 2010;1:41–50.
- [52] Brunero S, Stein-Parbury J. The effectiveness of clinical supervision in nursing: an evidenced based literature review. *Aust J Adv Nurs* 2008;25:86-94.

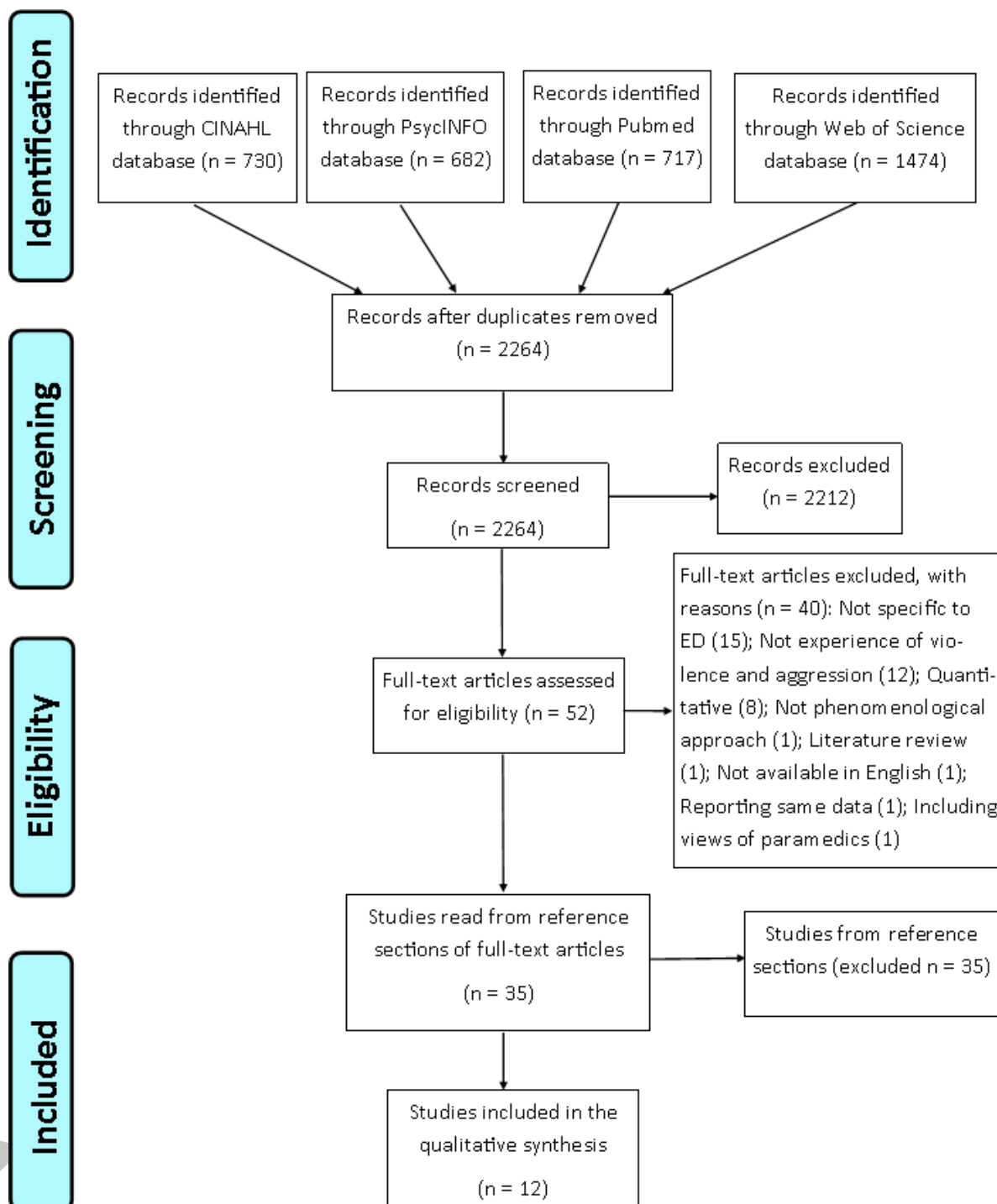


Figure 1. PRISMA diagram of search strategy.

Table 1. Characteristics of included studies.

	Country	Aims of study	Stated Methodology	Data collection methods	Participants
Catlette [2005]	USA	To study the phenomenon of workplace violence by interviewing emergency nurses who had experienced violence while on duty	Phenomenology	One-to-one interviews	8 nurses
d'Aubarede et al. [2016]	France	To explore and describe the ophthalmology emergency department personnel's experience of acts of violence and anti-social behaviour	Grounded theory, thematic content analysis	Field observations and semi-structured one-to-one interviews	30 staff; 15 nurses, 5 nursing auxiliaries, 7 interns, 2 receptionists and 1 senior physician
Hislop & Melby [2003]	UK	To describe and explore accident and emergency nurses' lived experience of violence in the workplace in one major acute hospital	Phenomenology (Giorgi, 1985)	One-to-one interviews	5 nurses
Hyland, Watts & Fry [2016]	Australia	To explore emergency nurses' perceptions of caring for patients displaying challenging behaviour	Thematic analysis	Open-ended survey questions	53 nurses
Knowles, Mason & Moriarty [2013]	UK	To examine staff perceptions and experiences of violent behaviour directed towards them within the emergency department	Thematic framework	Incident reporting, ethnographic observation and staff interviews	16 nurses, healthcare assistants, receptionist or hospital attendant
Lancman, Mângia & Muramoto [2013]	Brazil	To learn about situations of violence at work and their impact on workers in an emergency room	Tranversal, exploratory, descriptive and observational study	Semi structured one-to-one interviews	11 staff from different professional categories including nursing, psychology, security
Luck, Jackson &	Australia	To explore meanings that emergency department	Thematic	Participant	20 nurses

Usher [2008]		nurses ascribe to acts of violence from patients, their family and friends and what impact these meanings have on how they respond to such acts	analysis	observation, one-to-one interviews, informal field interviews and researcher journaling	
Pich et al. [2011]	Australia	To describe the experiences of a group of triage nurses with patient-related workplace violence during the previous month	Content analysis	Semi structured one-to-one interviews	6 nurses
Pich, Hazelton & Kable [2013]	Australia	To describe the experiences of Australian emergency department nurses with episodes of patient-related violence from young adults	Content analysis	Semi structured one-to-one interviews	11 nurses
Ramacciati, Ceccagnoli & Addey [2015]	Italy	To investigate the feelings experienced by nurses following episodes of violence in the workplace	Phenomenology (Colaizzi method)	Focus groups	9 nurses
Tan, Lopez & Cleary [2015]	Singapore	To explore nurses perceptions of managing aggressive patients in an emergency department	Thematic analysis	One-to-one interviews	10 nurses
Wolf, Delao & Perhats [2014]	USA	To better understand the experience of emergency nurses who have been physically assaulted while providing patient care in US emergency departments	Narrative	Narrative accounts	46 nurses

Table 2. Quality appraisal scores.

	Research design	Recruitment strategy	Data collection	Relationship between researcher and participants	Ethical issues	Data analysis	Findings	Value of research	Total
Catlette [2005]	2	3	3	2	3	3	3	2	21
d'Aubarede et al. [2016]	3	2	2	2	2	2	3	1	17
Hislop & Melby [2003]	3	3	2	3	2	2	3	1	19
Hyland, Watts & Fry [2016]	2	2	2	1	2	2	2	2	15
Knowles, Mason & Moriarty [2013]	2	1	2	1	1	2	3	2	14
Lancman, Mângia & Muramoto [2013]	2	1	3	2	2	1	2	1	14
Luck, Jackson & Usher [2008]	3	1	3	2	2	2	3	2	18
Pich et al. [2011]	3	2	1	1	2	2	3	2	16
Pich, Hazelton &	2	2	2	1	2	2	2	2	15

Kable [2013]

Ramacciati, Ceccagnoli & Addey [2015]	3	2	2	2	3	3	3	2	20
---	---	---	---	---	---	---	---	---	----

Tan, Lopez & Cleary [2015]	2	1	2	1	2	2	2	2	14
-------------------------------	---	---	---	---	---	---	---	---	----

Wolf, Delao & Perhats [2014]	2	2	2	1	1	2	2	2	14
---------------------------------	---	---	---	---	---	---	---	---	----

APPENDICES

Appendix 1-A. Detailed search strategy.

Pubmed	
Free text search terms (applied to Title/Abstract)	Qualitative OR perception* OR experienc* OR thematic analysis OR grounded theory OR semi structured OR focus group OR narrative OR interview* OR perspective* OR view* AND [Accident AND emergency] OR a&e OR emergency department OR emergency medical services OR triage OR paramedic OR hospital AND violen* OR aggressi* OR workplace violence OR [violence AND aggression] OR patient violence OR aggressive behavi* OR restraint OR physical intervention AND Staff OR nurs* OR medical staff OR healthcare staff OR medical personnel OR professionals OR health personnel OR healthcare workers
MeSH terms	violence OR aggression OR physical restraint AND "nursing" OR allied health personnel OR hospital medical staff AND emergency care OR emergency health service OR emergency hospital service OR emergency medical service OR emergency care AND qualitative research

Web of Science	
Topic terms	Qualitative OR perception* OR experienc* OR thematic analysis OR grounded theory OR semi structured OR focus group OR narrative OR interview* OR perspective* OR view* AND [Accident AND emergency] OR a&e OR emergency department OR emergency medical services OR triage OR paramedic OR hospital AND violen* OR aggressi* OR workplace violence OR [violence AND aggression] OR patient violence OR aggressive behavi* OR restraint OR physical intervention AND Staff OR nurs* OR medical staff OR healthcare staff OR medical personnel OR professionals OR health personnel OR healthcare workers

CINAHL	
Free text	Qualitative OR qualitative research OR experienc* OR perception* OR

search terms (applied to Abstract)	thematic analysis OR grounded theory OR “semi structured” OR interview* OR focus group OR narrative OR perspective* OR view* AND [Accident AND emergency] OR a&e OR “emergency department” OR “emergency medical services” OR triage OR paramedic OR hospital AND violen* OR aggressi* OR “workplace violence” OR [violence AND aggression] OR “patient violence” OR aggressive behavi* OR restraint OR physical intervention AND Staff OR nurs* OR medical staff OR medical personnel OR professionals OR healthcare workers OR health personnel OR healthcare staff
Subject terms	“Nursing Staff, Hospital” OR “Medical Staff, Hospital” OR “Attitude of Health Personnel” OR “Staff Nurses” OR “Health Personnel” OR “Medical Staff” AND “Restraint, Physical” OR “Aggression” OR “Violence” OR “Workplace Violence” AND “Qualitative Studies” AND “Emergency Service” OR “Emergency Medical Services”
PsycINFO	
Free text search terms (applied to Abstract)	Qualitative OR qualitative research OR experienc* OR perception* OR thematic analysis OR grounded theory OR “semi structured” OR interview* OR focus group OR narrative OR perspective* OR view* AND [Accident AND emergency] OR a&e OR “emergency department” OR “emergency medical services” OR triage OR paramedic OR hospital AND violen* OR aggressi* OR “workplace violence” OR [violence AND aggression] OR “patient violence” OR aggressive behavi* OR restraint OR physical intervention AND Staff OR nurs* OR medical staff OR medical personnel OR professionals OR healthcare workers OR health personnel OR healthcare staff
Subject terms	“Medical Personnel” AND “Emergency Services” AND “Violence” OR “Patient Violence” OR “Workpalce Violence” OR “Aggressive Behavior” “Aggressiveness” OR “Physical Restraint” AND “Qualitative Research” OR “Action Research” OR “Grounded Theory”

Appendix 1-B. Themes and concepts.

Key themes, first iterations	Key themes, final iterations (second order constructs)	Core concept, first iteration	Core concept, final iteration (third-order constructs)
Acts of violence and antisocial behaviour (D'Aubarede et al, 2016) Physical abuse (Pich et al, 2011) Verbal abuse (Pich et al, 2011) Behaviours (Pich, Hazelton & Kable, 2013)	Experience of violence and aggression	Inevitable experience of violence and aggression	The inevitability of violence and aggression
Comprehension of violence, aggression and conflict (Lancman, Mangia & Muramoto, 2013) The incidence of violence (Knowles, Mason & Moriarty, 2013) Inevitability (Ramacciati, Ceccagnoli & Addey, 2015) Feeling unsafe at work (Pich, Hazelton & Kable, 2013)	Inevitability of violence and aggression		
Feeling unsafe at work (Pich, Hazelton & Kable, 2013) Inadequate safety measures (Catlette, 2005) Vulnerability (Catlette, 2005) Feeling vulnerable (Ramacciati, Ceccagnoli & Addey, 2015) Increasing security (Hyland, Watts & Fry, 2016) Open access (Hyland, Watts & Fry, 2016) Rostering imbalance Hyland, Watts & Fry, 2016 Cue recognition (Wolf, Delao & Perhats, 2014)	Feeling vulnerable and unsafe	Feeling unsafe and unsupported	

<p>Feeling alone and unsupported by management (Ramacciati, Ceccagnoli & Addey, 2015)</p> <p>Organizational support and responsiveness (Tan, Lopez & Cleary, 2015)</p> <p>Environmental (Wolf, Delao & Perhats, 2014)</p> <p>The impact of violence (Knowles, Mason & Moriarty, 2013)</p> <p>Risk management strategies (Pich et al, 2011)</p>	<p>Feeling unsupported by management</p>		
<p>Reporting antisocial behaviors and acts of violence (D'Aubarede et al, 2016)</p> <p>Issues with the reporting process (Knowles, Mason & Moriarty, 2013)</p> <p>Organizational support and responsiveness (Tan, Lopez & Cleary, 2015)</p>	<p>Issues with reporting</p>		
<p>Nursing assessment of aggressive behaviours (Tan, Lopez & Cleary, 2015)</p> <p>Cue recognition (Wolf, Delao & Perhats, 2014)</p>	<p>Formal assessment of violence and aggression</p>	<p>Making sense of the reasons for violence and aggression</p>	<p>Staff judgments about why they face violence and aggression</p>
<p>Environmental (Wolf, Delao & Perhats, 2014)</p> <p>Vulnerability (Catlette, 2005)</p> <p>Local context factors inducing violence (D'Aubarede et al, 2016)</p> <p>Antecedents and risk factors (Pich et al, 2011)</p> <p>Antecedents (Pich, Hazelton & Kable, 2013)</p> <p>Staff perceptions about why they face violence (Knowles, Mason & Moriarty, 2013)</p> <p>Gender difference (Ramacciati, Ceccagnoli & Addey, 2015)</p> <p>Self awareness (Ramacciati, Ceccagnoli & Addey, 2015)</p>	<p>Perceptions about antecedents to violence</p>		
<p>Why me? (Hislop & Melby, 2003)</p> <p>Injustice (Ramacciati, Ceccagnoli & Addey, 2015)</p>	<p>Injustice</p>		

Antecedents and risk factors (Pich et al, 2011) Degree of personalization of the violence (Luck, Jackson & Usher, 2008) Presence of mitigating factors (Luck, Jackson & Usher, 2008) Reason for ED presentation (Luck, Jackson & Usher, 2008)	Mitigating factors		
Sense of isolation (Hislop & Melby, 2003) Feeling alone and unsupported by management (Ramacciati, Ceccagnoli & Addey, 2015) The impact of violent behaviour, personal and professional (Pich et al, 2011) Individual strategies for dealing with the public (D'Aubarede et al, 2016) Collective strategies (D'Aubarede et al, 2016) Nursing management of aggressive behaviors (Tan, Lopez & Cleary, 2015)	Strategies to manage violence and aggression	Dealing with violence and aggression	Managing in isolation
Sense of belonging (Hislop & Melby, 2003) The impact of violence (Knowles, Mason & Moriarty, 2013) Collective strategies (D'Aubarede et al, 2016)	Coping with violence and aggression		
Health impact (D'Aubarede et al, 2016) Impact on work (D'Aubarede et al, 2016) The impact of violence (Knowles, Mason & Moriarty, 2013) The emotional impact of violence and conflict in the workplace and its interference in other spheres of life (Lancman, Mangia & Muramoto, 2013) The impact of violent behaviour, personal and professional (Pich et al, 2011) Feeling of inadequacy and guilt (Ramacciati, Ceccagnoli & Addey, 2015) Long lasting effects (Ramacciati, Ceccagnoli & Addey, 2015) Fear (Ramacciati, Ceccagnoli & Addey, 2015) Impact of patients' aggressive behaviours on nurses (Tan, Lopez & Cleary, 2015) Personal (Wolf, Delao & Perhats, 2014)	Impact of violence and aggression	Impact of violence and aggression	Wounded heroes

Highlights:

- ED staff experienced violence and aggression as an inevitable part of the job
- Staff appraisals of violent behaviour influenced their tolerance towards patients
- Occupying role of victim when caring for patients created “wounds”
- Consistent organisational response to violence and aggression is imperative