

Supplementary information for: Sacrificial Crystal Templating of Hyaluronic Acid-Based Hydrogels.

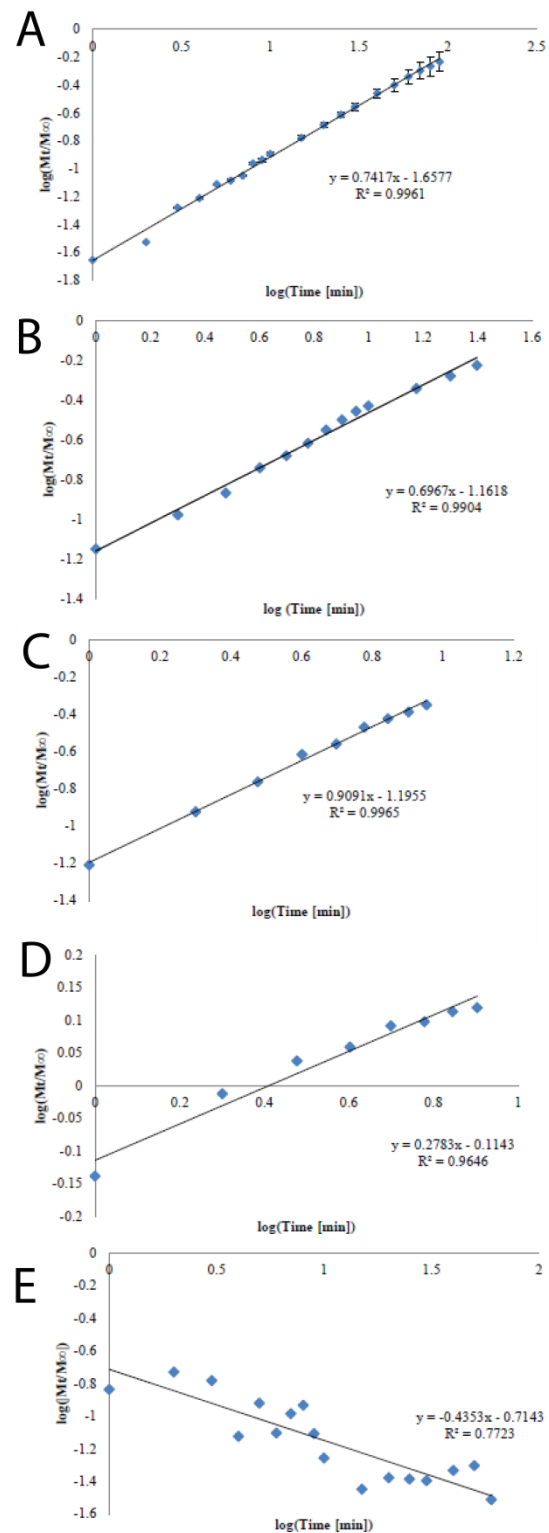


Figure S1. Kinetics of transport for hydrogels enabling determination of n and k . A) Not templated hydrogels. B) Glycine templated hydrogels. C) Urea templated hydrogels. D) Guanidine templated hydrogels. E) potassium dihydrogen phosphate-templated hydrogels.

Table S1. Phosphate ion and urea concentrations in effluent media from templated hydrogels at specific points in time.

Day	Mean Phosphate Concentration [μM]	Std. Error	Mean Urea Concentration [mM]	Std. Error
1	71380.56	6725.51	411.07	5.04
2	6459.82	372.97	72.19	2.19
3	589.29	29.55	23.99	2.33
4	35.17	9.71	14.12	3.32
5	4.57	2.05	0.22	0.06
6	1.62	2.75	0.24	0.05
7	0.9384	4.23	0.16	0.04

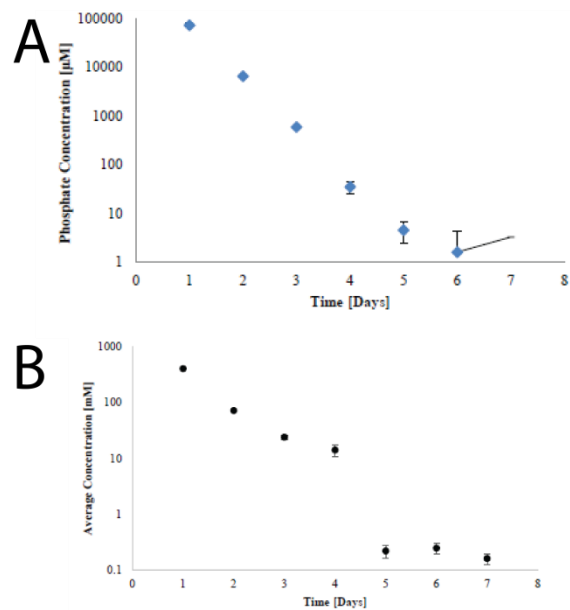


Figure S2. Phosphate ion (A) and urea (B) concentrations for effluent media from templated hydrogels.