



Review

Phosphate oxygen isotopes within aquatic ecosystems: Global data synthesis and future research priorities



Ceri L. Davies <sup>a</sup>, Ben W.J. Surridge <sup>a,\*</sup>, Daren C. Gooddy <sup>b</sup>

<sup>a</sup> Lancaster Environment Centre, Lancaster University, Lancaster LA1 4YQ, UK

<sup>b</sup> British Geological Survey, Maclean Building, Wallingford, Oxfordshire OX10 8BB, UK

HIGHLIGHTS

- Oxygen isotope ratio in dissolved inorganic phosphate a novel stable isotope tracer.
- Theoretical basis for application of this tracer in aquatic ecosystems reviewed.
- Protocols for determining phosphate oxygen isotope ratio summarised.
- Synthesis of global data from marine and freshwater ecosystems reported.
- Priorities for future research in this rapidly evolving field identified.

ARTICLE INFO

Article history:

Received 22 May 2014

Received in revised form 8 July 2014

Accepted 8 July 2014

Available online 8 August 2014

Editor: D. Barcelo

Keywords:

Phosphorus  
Oxygen isotopes  
Eutrophication  
Freshwater  
Nutrient sources  
Metabolism

ABSTRACT

The oxygen isotope ratio of dissolved inorganic phosphate ( $\delta^{18}\text{O}_p$ ) represents a novel and potentially powerful stable isotope tracer for biogeochemical research. Analysis of  $\delta^{18}\text{O}_p$  may offer new insights into the relative importance of different sources of phosphorus within natural ecosystems. Due to the isotope fractionations that occur alongside the metabolism of phosphorus,  $\delta^{18}\text{O}_p$  could also be used to better understand the intracellular and extracellular reaction mechanisms that control phosphorus cycling. In this review focussed on aquatic ecosystems, we examine the theoretical basis to using stable oxygen isotopes within phosphorus research. We consider the methodological challenges involved in accurately determining  $\delta^{18}\text{O}_p$ , given aquatic matrices in which potential sources of contaminant oxygen are ubiquitous. Finally, we synthesise the existing global data regarding  $\delta^{18}\text{O}_p$  in aquatic ecosystems, concluding by identifying four key areas for future development of  $\delta^{18}\text{O}_p$  research. Through this synthesis, we seek to stimulate broader interest in the use of  $\delta^{18}\text{O}_p$  to address the significant research and management challenges that continue to surround the stewardship of phosphorus.

© 2014 The Authors. Published by Elsevier B.V. This is an open access article under the CC BY license (<http://creativecommons.org/licenses/by/3.0/>).

Contents

1. Introduction . . . . .	0
2. Stable isotopes and P biogeochemistry: theoretical background . . . . .	0
3. Isotope effects controlling $\delta^{18}\text{O}_p$ during biogeochemical cycling of P . . . . .	0
3.1. Intracellular metabolism of $\text{P}_i$ . . . . .	0
3.2. Uptake of extracellular $\text{P}_i$ . . . . .	0
3.3. Extracellular hydrolysis of organic P compounds . . . . .	0
4. Analytical protocols for determining $\delta^{18}\text{O}_p$ . . . . .	0
4.1. $\text{P}_i$ extraction protocols for aqueous matrices . . . . .	0
4.2. Determination of $\delta^{18}\text{O}_p$ through EA-IRMS . . . . .	0
5. Synthesis of global $\delta^{18}\text{O}_p$ data from aquatic ecosystems. . . . .	0
5.1. Marine ecosystems. . . . .	0
5.2. Estuarine ecosystems. . . . .	0
5.3. Sediments within aquatic ecosystems . . . . .	0

\* Corresponding author. Tel.: +44 (0) 1524 594516.  
E-mail address: [b.surridge@lancaster.ac.uk](mailto:b.surridge@lancaster.ac.uk) (B.W.J. Surridge).

6. Freshwater ecosystems . . . . .	0
6.1. Application of $\delta^{18}\text{O}_p$ to identify sources of P in freshwater ecosystems . . . . .	0
6.2. Evidence of metabolism of P in freshwater ecosystems from $\delta^{18}\text{O}_p$ analysis. . . . .	0
7. Concluding remarks and priorities for future research. . . . .	0
Acknowledgements . . . . .	0
References. . . . .	0

## 1. Introduction

Phosphorus (P) is an essential element for all life, being integral to the structure and function of key biomolecules including DNA, RNA, adenosine triphosphate (ATP) and phospholipids. Under ambient conditions in natural ecosystems, P is tightly cycled within the biosphere and can limit or co-limit primary producer and microbial communities (Ruttenberg, 2003). However, inputs of P to terrestrial and aquatic ecosystems from a range of sources, alongside fluxes of P between these ecosystems, have increased significantly as a result of global population growth and attempts to expand and intensify food production for human society (Filippelli, 2008; Liu et al., 2008). Recent increases in bioavailable P fluxes and concentrations have been linked to undesirable ecosystem changes, including increases in primary production, shifts in community composition, increased frequency of algal blooms and hypoxia, and reduced biodiversity within aquatic ecosystems (Sondergaard and Jeppesen, 2007; Smith and Schindler, 2009).

Inefficient P use and the lack of effective recycling of P within urban and agricultural systems define a 'broken' P biogeochemical cycle, leading to concern over whether human use of P resources is sustainable (Cordell et al., 2009; Childers et al., 2011; Elser and Bennett, 2011). Whilst estimates of mineral P reserves have increased dramatically in recent years (Jasinski, 2012), these estimates remain highly uncertain and future exhaustion of reserves is likely without major advances in P mining and recycling technologies (Vaccari and Strigul, 2011; Seyhan et al., 2012). Securing access to P remains a globally significant issue, given the reliance of agricultural production on inorganic P fertilisers and the current lack of alternative sources for P beyond mineral reserves (Beardsley, 2011).

Despite the importance of P to human society, and the implications for natural ecosystems of perturbations to the P cycle, understanding of the sources and reaction mechanisms controlling biogeochemical cycling of P within ecosystems remains limited (Blake et al., 2005; Slomp, 2011). A critical reason for this is the lack of inherent tracers for analysing the sources and the metabolism of P in natural ecosystems (Karl, 2000). For example, quantifying the importance of different sources of P in aquatic ecosystems has previously relied on mass flux budgets, spatial and temporal analysis of P concentration, export coefficient models and indirect tracers such as boron as a marker for waste water treatment plant (WWTP) effluent, or microbial source tracking to identify human versus agricultural sources of faecal contamination (Dillon and Kirchner, 1975; Smith et al., 1989; Neal et al., 2000; Jarvie et al., 2002; Scott et al., 2002; Simpson et al., 2002; Holt et al., 2003; Bowes et al., 2008). However, none of these approaches provides an inherent label for P. As a result, none offers a direct means of tracing specific sources or biogeochemical processes relevant to the P cycle.

The stable oxygen isotope ratio within phosphate (hereafter,  $\delta^{18}\text{O}_p$ ) has recently emerged as a novel and potentially powerful inherent tracer for the sources and metabolism of P in natural ecosystems (McLaughlin et al., 2004; Elsbury et al., 2009; Young et al., 2009; Goldhammer et al., 2011a; Li et al., 2011). This review focusses on the use of  $\delta^{18}\text{O}_p$  in aquatic ecosystems and particularly within freshwater ecosystems, complementing a recent review dealing with  $\delta^{18}\text{O}_p$  in soil-plant systems (Tamburini et al., 2014). Our objectives are to: i) examine the theoretical basis to the use of  $\delta^{18}\text{O}_p$  in P research; ii) consider the methodological challenges involved in the analysis of  $\delta^{18}\text{O}_p$  in

aquatic ecosystems; and iii) synthesise global data from initial application of  $\delta^{18}\text{O}_p$  within aquatic ecosystems. We conclude by identifying future priorities for  $\delta^{18}\text{O}_p$  research within freshwater ecosystems, aiming to stimulate further development and application of this technique.

## 2. Stable isotopes and P biogeochemistry: theoretical background

Phosphorus has three major isotopes,  $^{31}\text{P}$  (stable),  $^{32}\text{P}$  ( $t_{1/2} = 14.36$  days) and  $^{33}\text{P}$  ( $t_{1/2} = 25.34$  days) (Smith et al., 2011). Biogeochemical cycling of P in aquatic ecosystems has previously been explored using the radioactive isotopes  $^{32}\text{P}$  and  $^{33}\text{P}$  (Benitez-Nelson and Buesseler, 1999; Benitez-Nelson, 2000). However, the use of radioisotopes is constrained by short isotope half-lives, perturbation of experimental systems associated with labelling, or the use of incubations which omits irregular events that occur in natural ecosystems, such as seasonal algal blooms (Levine et al., 1986; Thingstad et al., 1993; Benitez-Nelson, 2000).

Stable isotope ratios have been widely used to understand long-term trends and processes in both local and global biogeochemical cycles (Beveridge and Shackleton, 1994; Newton and Bottrell, 2007 and references therein). Stable isotope analysis requires an element to have a minimum of two naturally-occurring stable isotopes, with changes in the ratio of individual isotopes of an element in a sample, against a known ratio in a reference, providing insight into biogeochemical processes controlling the element cycle. Carbon (C), nitrogen (N) and oxygen (O) are commonly used in stable isotope research on the basis of ratios of  $^{13}\text{C}/^{12}\text{C}$ ,  $^{15}\text{N}/^{14}\text{N}$  and  $^{18}\text{O}/^{16}\text{O}$  respectively. However, stable isotope analyses cannot be conducted on the P atom in P-containing compounds, because  $^{31}\text{P}$  is the only stable P isotope.

In natural aquatic ecosystems, P is often bound strongly to O in the form of the dissolved inorganic phosphate ion, defined hereafter as  $\text{P}_i$ . Therefore, attention has recently focussed on whether the stable isotope composition of O in  $\text{P}_i$  can be used to gain insight into the biogeochemical cycling of P. Isotope fractionation involves the preferential incorporation of one isotope from a starting material over another into a reaction product. Kinetic fractionation describes a process that preferentially selects one isotope (generally the lighter isotope) due to a faster reaction rate in a unidirectional reaction. In contrast, equilibrium fractionation is a thermodynamic effect in which a system has time to exchange isotopes continuously in order to achieve the lowest energy system, wherein the heavier isotope forms the strongest bond possible (Hoefs, 2008). The P–O bonds in  $\text{P}_i$  are resistant to inorganic hydrolysis under typical temperature and pressure conditions in the Earth's surface water and groundwater ecosystems (O'Neil et al., 2003). Therefore, without biological mediation, negligible isotope exchange occurs between  $\text{P}_i$  and water within these ecosystems (Tudge, 1960; Blake et al., 2001). Whilst the initial stages of some abiotic reactions, including the sorption of  $\text{P}_i$  to solid-phase iron-oxide or the formation of apatite, may be associated with kinetic fractionation, this does not persist and through time the stable isotope composition of the solid-phase  $\text{P}_i$  approaches that of the aqueous-phase  $\text{P}_i$  (Liang and Blake, 2007; Jaisi et al., 2010, 2011). In contrast, enzyme-catalysed processes cleave P–O bonds leading to kinetic or equilibrium fractionation between the isotopes of O in  $\text{P}_i$  and O in a surrounding fluid, either within a cell or within the extracellular environment (Blake et al., 2005). The fractionation between the stable isotopes of O ( $^{16}\text{O}$  and  $^{18}\text{O}$ ) within a

sample is expressed as  $\delta^{18}\text{O}$ , relative to Vienna Standard Mean Ocean Water (VSMOW), defined as 0‰<sub>VSMOW</sub> on the  $\delta^{18}\text{O}$  scale (Eq. (1)).

$$\delta^{18}\text{O}_{\text{sample}} = 1000 \left[ \frac{\left( \frac{^{18}\text{O}}{^{16}\text{O}} \right)_{\text{sample}}}{\left( \frac{^{18}\text{O}}{^{16}\text{O}} \right)_{\text{standard}}} - 1 \right] \text{‰}_{\text{VSMOW}} \quad (1)$$

Phosphate oxygen isotopes have previously been used within both the archaeological and environmental communities to determine palaeoclimate conditions at the time of formation of biogenic phosphatic material, such as apatite in fossil bones and teeth, as well as to reconstruct historical salinity and water temperatures from biogenic phosphate derived from fish remains (Longinelli and Nuti, 1973; Bryant et al., 1994; Fricke and O'Neil, 1996; Lécuyer et al., 1996; Stephan, 2000). Recent methodological advances in the analysis of  $\delta^{18}\text{O}_p$  now provide the opportunity to use  $\delta^{18}\text{O}_p$  as both a tracer of source and of the extent of metabolism of P in aquatic ecosystems (McLaughlin et al., 2004; Elsbury et al., 2009; Goldhammer et al., 2011b).

### 3. Isotope effects controlling $\delta^{18}\text{O}_p$ during biogeochemical cycling of P

A range of isotope effects associated with metabolic processes have the potential to influence  $\delta^{18}\text{O}_p$ . These effects are summarised in Fig. 1 and described in Sections 3.1 to 3.3.

#### 3.1. Intracellular metabolism of $P_i$

A variety of P-containing compounds are present within aquatic ecosystems, including  $P_i$ , inorganic polyphosphates and organic compounds such as proteins, sugars and phospholipids (Karl and Tien, 1997). However,  $P_i$  is the species preferentially utilised by organisms as it is capable of diffusion across cytoplasmic cell membranes (Björkman and Karl, 1994; Liang and Blake, 2006b). Consequently,  $P_i$  is required for a number of intracellular reactions, including cellular signalling through phosphorylation and dephosphorylation, as well as being incorporated within biomass during cell growth (Blake et al., 1997, 2005). The major enzyme that catalyses intracellular P cycling is inorganic pyrophosphatase, due to its ability to mediate reversible reactions such as the cleavage of adenosine-5'-triphosphate to adenosine-5'-diphosphate (Cohn, 1958; Blake et al., 2005; Fig. 2). Intracellular reactions catalysed by inorganic pyrophosphatase cause complete and very rapid (in the order of minutes) O isotope exchange between O

atoms in  $P_i$  and O atoms in surrounding water molecules that donate O atoms to newly produced  $P_i$  molecules (Kolodny et al., 1983; Blake et al., 1997). Thermodynamic fractionation characterises the exchange of O between  $P_i$  and the surrounding fluid, resulting in temperature-dependent equilibrium between O in  $P_i$  and O within intracellular water ( $\delta^{18}\text{O}_w$ , expected to be identical to extracellular  $\delta^{18}\text{O}_w$  (Fricke et al., 1998)).

Release of P from biomass into the extracellular environment is driven by two mechanisms. Firstly, from live biomass as a by-product of uptake and intracellular metabolic reactions, in order to maintain nontoxic intracellular P concentrations (Cooperman et al., 1992). Secondly, following the death and lysis of cells (see Section 3.3). Within environments in which  $P_i$  is extensively taken up and recycled through live biomass, an initially distinctive  $\delta^{18}\text{O}_p$  composition in the extracellular environment, potentially reflecting sources of P, could be overprinted following intracellular, equilibrium fractionation and release of  $P_i$  to the extracellular environment. The  $\delta^{18}\text{O}$  value of a  $P_i$  molecule in equilibrium with surrounding water can be predicted, based on the measured  $\delta^{18}\text{O}_w$  and temperature of the surrounding water, using the empirically-derived Eq. (2) (Longinelli and Nuti, 1973). This is the basis for using historical  $\delta^{18}\text{O}_p$  in solid-phase samples, such as tooth enamel, as a palaeothermometer, given an ecosystem in equilibrium via intracellular metabolism (Kolodny et al., 1983; Fricke et al., 1998).

$$T(^{\circ}\text{C}) = 111.4 - 4.3(\delta^{18}\text{O}_p - \delta^{18}\text{O}_w) \quad (2)$$

where T is the average growth temperature during shell formation for sampled organisms and  $\delta^{18}\text{O}_p$  and  $\delta^{18}\text{O}_w$  refer to the isotopic composition of  $P_i$  and environmental water (at 25.2 °C) respectively. Whilst predominantly based on biogenic apatite from marine organisms, one freshwater species, *Unio pictorum*, was included in the data from which Eq. (2) was derived, suggesting no significant difference between seawater and freshwater equilibria equations. Although Eq. (2) has been used widely, more recent development of techniques for purification of  $P_i$  from solid materials and for determination of  $\delta^{18}\text{O}_p$  led Pucéat et al. (2010) to propose a revised phosphate–water fractionation equation based on empirical work (Eq. (3)):

$$T(^{\circ}\text{C}) = 118.7(\pm 4.9) - 4.3(\pm 0.20)(\delta^{18}\text{O}_p - \delta^{18}\text{O}_w) \quad (3)$$

Based on empirical Eqs. (2) or (3), if both the ambient water temperature and  $\delta^{18}\text{O}_w$  are determined then the expected equilibrium value for  $\delta^{18}\text{O}_p$  can be calculated. Comparing the theoretical value for  $\delta^{18}\text{O}_p$  at

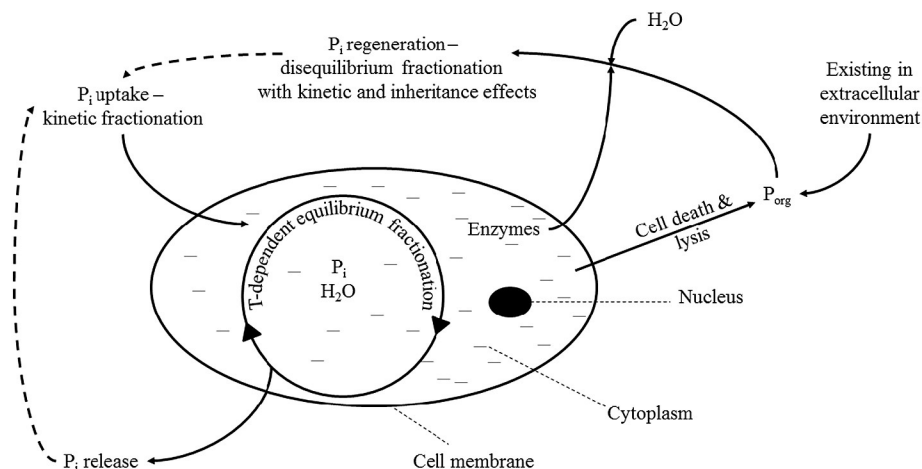


Fig. 1. Schematic diagram describing the major isotope effects that can occur within the intracellular or extracellular environment due to metabolic processes. P<sub>org</sub> = organic P compounds; P<sub>i</sub> = dissolved inorganic phosphate ion; H<sub>2</sub>O = water molecule, T = temperature.

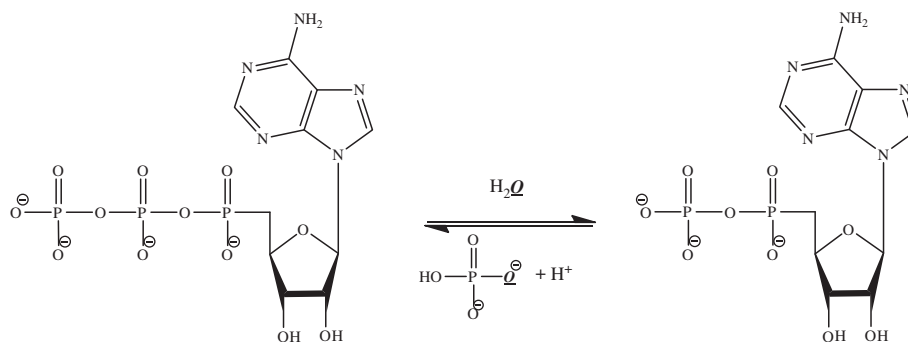


Fig. 2. Reversible reaction of the dephosphorylation of adenosine-5'-triphosphate to adenosine-5'-diphosphate, in which P<sub>i</sub> is generated as a by-product (Gajewski et al., 1986).

equilibrium with  $\delta^{18}\text{O}_\text{p}$  observed in an environmental sample can provide insight into the extent to which P<sub>i</sub> has been recycled through intracellular metabolic reactions, assuming that  $\delta^{18}\text{O}_\text{p}$  in the sources of P to an ecosystem was originally at disequilibrium.

### 3.2. Uptake of extracellular P<sub>i</sub>

Many biologically-mediated processes associated with isotope effects are kinetically controlled, for example bacterial sulfate reduction and methanogenesis (Nakai and Jensen, 1964; Whiticar, 1999). During bacterial sulfate reduction, bacteria preferentially reduce <sup>32</sup>S- and <sup>16</sup>O-containing sulfate molecules, because these molecules have lower

bond energies due to a lower combined mass. Thus, bacteria can metabolise isotopically lighter sulfate at a faster rate, resulting in the formation of isotopically light sulfide relative to the starting sulfate pool, assuming that only partial reduction of the available sulfate occurs (e.g. Habicht and Canfield, 1997). A similar kinetic fractionation may also be imparted on the P<sub>i</sub> pool during biological uptake of P<sub>i</sub> from the extracellular environment. Initial research reported by Blake et al. (2005) has demonstrated that *Escherichia coli* grown in controlled laboratory conditions preferentially take up <sup>31</sup>P<sup>16</sup>O<sub>4</sub><sup>3-</sup> compared to the isotopically-heavier <sup>31</sup>P<sup>18</sup>O<sub>4</sub><sup>3-</sup>, resulting in enrichment of the extracellular environment with <sup>31</sup>P<sup>18</sup>O<sub>4</sub><sup>3-</sup>. If this kinetic isotope effect operates more widely in natural ecosystems, the effect would only be observed

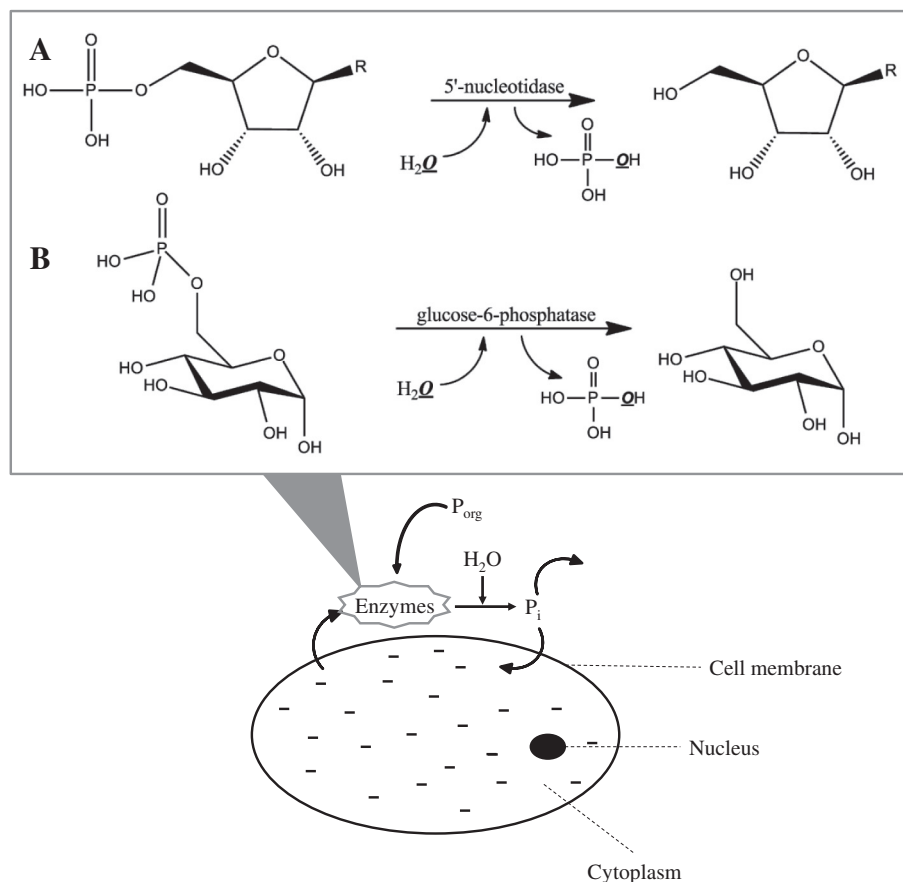


Fig. 3. Schematic diagram representing extracellular metabolism of P<sub>i</sub>, in which enzymes are released to the extracellular environment beyond the cytoplasmic membrane to metabolise P<sub>org</sub> and release P<sub>i</sub> which is subsequently transported across the cell membrane. Reactions include: A: Hydrolysis of a 5'nucleotide molecule through the action of 5'nucleotidase; and B: Hydrolysis of glucose-6-phosphate through the action of glucose-6-phosphatase. Both reactions yield a P<sub>i</sub> molecule as a by-product.

given unidirectional reactions in which the reactants are not fully consumed and where competing fractionations do not over-print that associated with biological uptake of  $P_i$ .

### 3.3. Extracellular hydrolysis of organic P compounds

Organic P ( $P_{org}$ ) compounds can be used to support metabolism given low bioavailable  $P_i$  concentrations within the extracellular environment. However,  $P_{org}$  compounds are too large for direct diffusion across cytoplasmic cell membranes (Liang and Blake, 2006b). Therefore,  $P_{org}$  must be hydrolysed through enzyme-mediated reactions involving phosphohydrolases that are either attached to the outside of a cell membrane or are secreted by organisms into the extracellular environment (Liang and Blake, 2006b). These extracellular metabolic reactions release  $P_i$  as a by-product (Fig. 3) that can be transported into a cell via diffusion or via ATP-driven pumps or transport proteins (Ammerman, 1991).

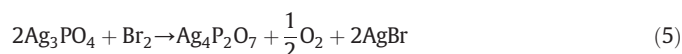
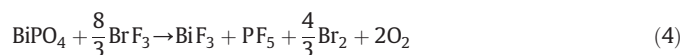
During enzyme-catalysed hydrolysis of  $P_{org}$ , P–O bonds are cleaved and O atoms within the original  $P_{org}$  compound are replaced with O atoms from surrounding water molecules in the newly created  $P_i$ . The specific enzyme and associated hydrolysis pathway will influence the extent of O isotope exchange. For hydrolysis catalysed by a phosphomonoesterase, one O atom within the newly produced  $P_i$  will be incorporated from the surrounding water-O and the remaining three O atoms are inherited from the  $P_{org}$  compound. With hydrolysis catalysed by a phosphodiesterase, two O atoms will be incorporated from the surrounding water-O (in a two-stage process involving incorporation of one O atom due to the action of the phosphodiesterase and the second O atom due to phosphomonoesterase-catalysed hydrolysis of the newly produced monoester), with the remaining two O atoms inherited from the  $P_{org}$  compound. Because extracellular hydrolysis of  $P_{org}$  does not result in complete exchange of all four O atoms in  $P_i$  with O atoms in water, inheritance isotope effects occur in which  $\delta^{18}O_p$  of the newly produced  $P_i$  lies between that of the starting  $P_{org}$  compound and  $\delta^{18}O_w$  (Blake et al., 1997; Colman et al., 2005). Incorporation of water-O within  $P_i$  during extracellular hydrolysis of  $P_{org}$  is also accompanied by a kinetic fractionation, due to more rapid incorporation of the isotopically lighter  $^{16}O$  atom compared to the  $^{18}O$  atom from water molecules in the resulting  $P_i$  (Blake et al., 2005). To date however, the magnitude of the fractionation factor associated with this process has only been quantified for a small number of enzyme–substrate combinations (e.g. Liang and Blake, 2006b).

In many aquatic environments, extracellular hydrolysis is significant in the regeneration of  $P_i$  (Ammerman and Azam, 1985; Chrost, 1991; Colman et al., 2005; Goldhammer et al., 2011a). The fate of  $P_i$  regenerated from  $P_{org}$  depends on the initial driver for  $P_i$  regeneration from organic matter. Under conditions of  $P_i$  limitation, regenerated  $P_i$  is required to meet the metabolic demand for P among heterotrophic microorganisms. Alternatively, dephosphorylation of particulate or dissolved  $P_{org}$  may be required prior to uptake of C compounds to meet intracellular energy or C requirements among heterotrophic organisms (Colman et al., 2005; Goldhammer et al., 2011a). Because C rather than P demand drives dephosphorylation under these conditions, not all  $P_i$  regenerated from  $P_{org}$  is necessarily taken up and recycled extensively through biomass. For example, it has been estimated that in coastal waters only 10–15% of  $P_i$  produced through the action of secreted 5'-nucleotidase was taken up by microorganisms (Ammerman and Azam, 1985). The remaining 85–90% may enter the  $P_i$  pool of the water column and affect the bulk  $\delta^{18}O_p$  value of the extracellular environment. Effects on extracellular  $\delta^{18}O_p$  due to regeneration of  $P_i$  from  $P_{org}$  that is driven by C-limitation have also been observed in deep-ocean water and in marine sediment porewater (Colman et al., 2005; Goldhammer et al., 2011a).

## 4. Analytical protocols for determining $\delta^{18}O_p$

Historically,  $\delta^{18}O_p$  has been determined through fluorination or bromination of a phosphate precipitate, traditionally bismuth(III) phosphate ( $BiPO_4$ ) although currently silver(I) phosphate ( $Ag_3PO_4$ ) (Lécuyer,

2004). Fluorination (Eq. (4)) and bromination (Eq. (5)) halogenate the metal ion, reducing the bromine present and releasing gaseous  $O_2$  which can be quantitatively converted into  $CO_2$  for analysis (Vennemann et al., 2002; Lécuyer, 2004). However, fluorination (which can also be achieved using  $BrF_5$ ) and bromination reactions can suffer from the use of hazardous materials, poor  $O_2$  yields, time intensive preparation (precipitation of  $BiPO_4$  requires 6 days of extraction time relative to the 3 days of the  $Ag_3PO_4$  precipitation method) and the requirement for large sample sizes in both methods (typically 4–5 mg  $Ag_3PO_4$ ) (Lécuyer et al., 1993; Vennemann et al., 2002; Lécuyer, 2004; Gruau et al., 2005).

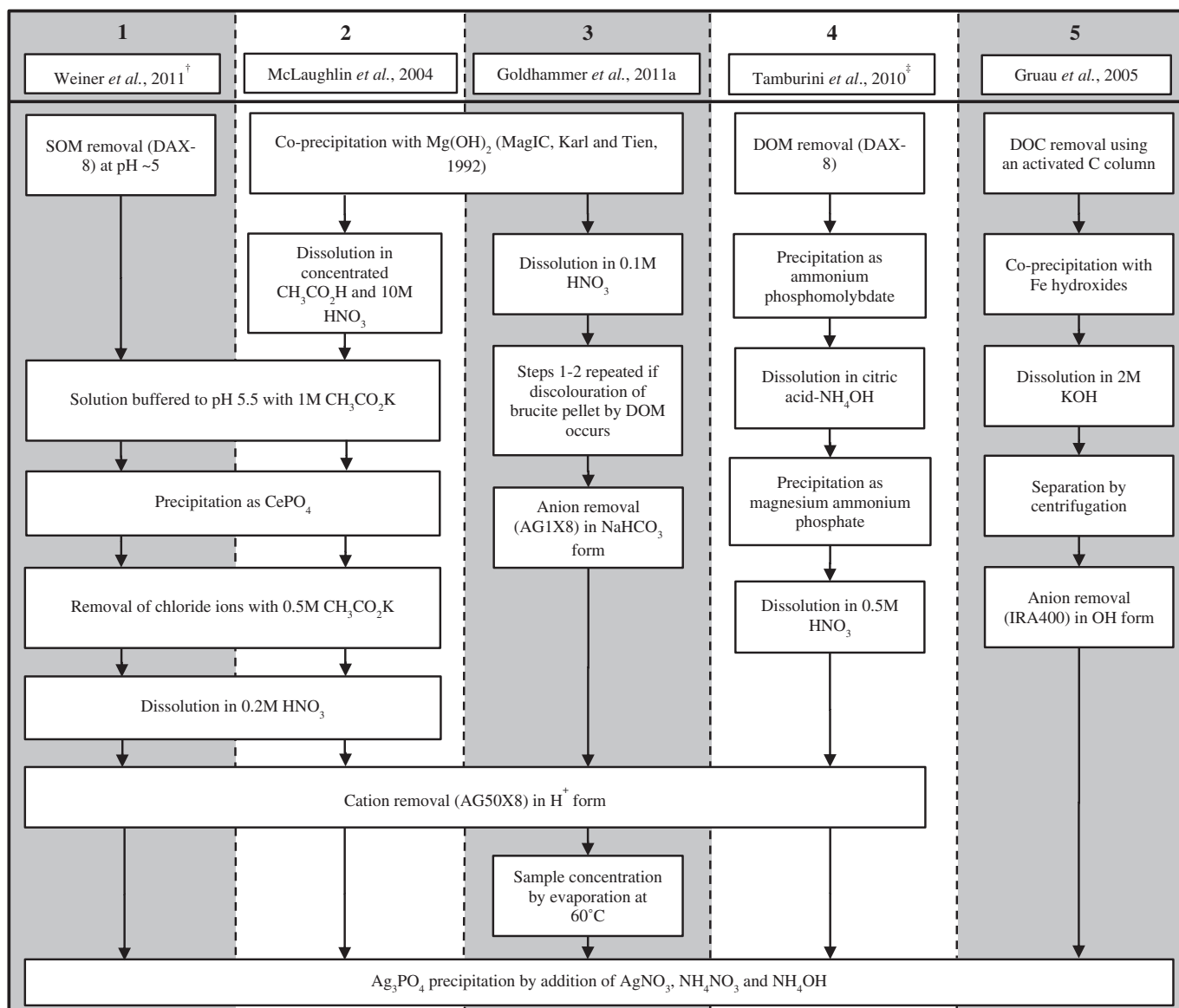


Isotope ratio mass spectrometry (IRMS) allows for the precise measurement of small mass differences between different isotopes within a compound and, when coupled to a thermal conversion/elemental analyser (TC/EA), the system can carry out relatively rapid on-line measurements of isotope ratios (LaPorte et al., 2009). These systems have been automated, whilst retaining both precision and accuracy, for  $\delta^{13}C$ ,  $\delta^{15}N$  and  $\delta^{18}O$  solid sample analysis. A further advantage of TC/EA-IRMS is the relatively small sample mass required for analysis (typically 400–500  $\mu g$   $Ag_3PO_4$ ). To establish similar TC/EA-IRMS protocols for  $\delta^{18}O$  measurements in  $P_i$ , aqueous samples containing  $P_i$  must be converted from dissolved to solid form. In this conversion, particular care must be taken to ensure that: i) the original isotope composition of  $P_i$  is retained by using non-fractionating reactions or ensuring reactions go to completion; ii)  $P_i$  is not introduced through hydrolysis within  $P_{org}$ -rich natural samples; and iii) other O-bearing compounds including dissolved organic carbon (DOC), nitrate ( $NO_3^-$ ), sulfate ( $SO_4^{2-}$ ) and calcium carbonate ( $CaCO_3$ ) are excluded from the final solid product.

Bismuth(III) phosphate ( $BiPO_4$ ) is a hygroscopic material, with full rehydration following dehydration possible after 15 min in air. The  $BiPO_4$  precipitate requires significant preparation before isotopic analysis to remove adsorbed water which can otherwise increase O yields by up to 12.5% in  $\delta^{18}O_p$  analysis (Karhu and Epstein, 1986), with  $\delta^{18}O_p$  enrichment possible when drying at temperatures greater than 200 °C (Mooney-Slater, 1962; Shemesh and Kolodny, 1988). Such constraints limit the utility of  $BiPO_4$ , leading to consideration of alternative solid-phase compounds for analysis of  $\delta^{18}O_p$ . Silver(I) phosphate ( $Ag_3PO_4$ ) has been identified as a suitable alternative, due to its weakly hygroscopic nature, stability, low solubility and relatively short preparation time (Lécuyer, 2004; McLaughlin et al., 2004; Tamburini et al., 2010). Firsching (1961) was among the first to precipitate  $Ag_3PO_4$  in order to gravimetrically determine the phosphate concentration of a homogeneous solution. Whilst silicates and multivalent ions were observed to interfere with  $Ag_3PO_4$  precipitation, ions with lower valences did not significantly interfere (e.g.  $NO_3^-$ , ammonium ( $NH_4^+$ ) and potassium ( $K^+$ )), or exerted only a slight effect at high concentrations (sodium ( $Na^+$ ) and  $SO_4^{2-}$ ). However,  $Ag_3PO_4$  has only more recently become a viable basis for analysis of  $\delta^{18}O_p$  in aqueous environmental samples, following advances in extraction protocols that enable the precipitation of a sufficient mass of  $Ag_3PO_4$  for analysis from complex matrices that often contain low concentrations of  $P_i$  (Colman, 2002; McLaughlin et al., 2004).

### 4.1. $P_i$ extraction protocols for aqueous matrices

The major published protocols for extraction of  $P_i$  via precipitation of  $Ag_3PO_4$  are summarised in Fig. 4. None of the protocols in Fig. 4 currently represents a definitive approach for all aquatic matrices. Development



**Fig. 4.** Categorisation of published protocols for the precipitation of Ag<sub>3</sub>PO<sub>4</sub> from aqueous samples. <sup>†</sup>Weiner *et al.* (2011) method is based on soil extracts using anion-exchange resin. <sup>‡</sup>Tamburini *et al.* (2010) method is based on HCl extracts of soil samples.

and evaluation of extraction protocols are required across the range of aquatic samples in which  $\delta^{18}\text{O}_p$  research is undertaken, to ensure that accurate determination of  $\delta^{18}\text{O}_p$  is achieved within these complex matrices.

There are commonalities across these protocols, particularly across procedures 1–4: i) concentration of P<sub>i</sub> through co-precipitation of P<sub>i</sub> with brucite following the magnesium-induced co-precipitation (MagIC) method of Karl and Tien (1992); ii) redissolution of the brucite precipitate in an acid matrix; iii) removal of other potential sources of O using anion exchange resins and/or sequential precipitations; iv) removal of cations that have the potential to interfere with Ag<sub>3</sub>PO<sub>4</sub> precipitation, using a cation exchange resin; iv) precipitation of Ag<sub>3</sub>PO<sub>4</sub>. The method of Gruau *et al.* (2005) in Fig. 4 was developed for freshwaters and includes an initial dissolved organic matter (DOM) removal step using activated carbon. This protocol is based on the BiPO<sub>4</sub> method of Longinelli *et al.* (1976), with the benefit of a weakly hygroscopic end precipitate (Ag<sub>3</sub>PO<sub>4</sub>) relative to BiPO<sub>4</sub>.

Final precipitation of Ag<sub>3</sub>PO<sub>4</sub> is accomplished using either 'slow' or 'fast' approaches. Both precipitation methods involve the addition of silver nitrate (AgNO<sub>3</sub>), ammonium hydroxide (NH<sub>4</sub>OH) and ammonium nitrate (NH<sub>4</sub>NO<sub>3</sub>) to form a near-neutral pH solution. Whilst 'slow'

precipitation is achieved by holding a solution at ~50 °C over several days to allow large Ag<sub>3</sub>PO<sub>4</sub> crystals to grow, 'fast' precipitation can achieve full precipitation in a matter of minutes (Dettman *et al.*, 2001; Tamburini *et al.*, 2010). The 'fast' precipitation also has the added advantage of 100% Ag<sub>3</sub>PO<sub>4</sub> yields independent of sample sizes, whereas lower recovery has been observed using the 'slow' precipitation, particularly for smaller P<sub>i</sub> masses (Dettman *et al.*, 2001). However, the isotopic difference in Ag<sub>3</sub>PO<sub>4</sub> generated by the two methods has been found to be within expected interlaboratory variation (Dettman *et al.*, 2001).

Some research has applied the McLaughlin *et al.* (2004) protocol that was originally developed for marine systems to freshwater matrices without modification, whilst other research has adapted one of the major Ag<sub>3</sub>PO<sub>4</sub> precipitation protocols to include clean-up stages for samples containing high concentrations of particulate organic matter and DOM. Particulate organic matter in environmental samples is typically removed through filtration at a maximum filter pore size of 0.45 μm (Elsbury *et al.*, 2009; Li *et al.*, 2011). In organic-rich sample matrices, including many freshwaters, inefficient removal of DOM could significantly influence measured  $\delta^{18}\text{O}_p$ , because DOM can consist of up to 45% O by weight and has been shown to persist until the precipitation

of  $\text{Ag}_3\text{PO}_4$  (Ma et al., 2001; Lécuyer, 2004; McLaughlin et al., 2004; Zohar et al., 2010). For accurate determination of  $\delta^{18}\text{O}_p$ , all O-containing contaminants, especially DOM, must be removed from the  $\text{Ag}_3\text{PO}_4$  precipitate prior to TC/EA-IRMS. This remains a significant challenge for research seeking to apply  $\delta^{18}\text{O}_p$  to complex freshwater matrices. Removal of DOM from samples has been attempted through adsorption of organic compounds to activated carbon (Gruau et al., 2005), washing the final  $\text{Ag}_3\text{PO}_4$  precipitate with hydrogen peroxide to oxidise organic compounds (Tamburini et al., 2010; Zohar et al., 2010), using resins to specifically remove DOM (Tamburini et al., 2010), repetition of precipitation steps such as MagIC in order to isolate  $\text{P}_i$  from a matrix of potential contaminants (Goldhammer et al., 2011b), and pH-specific precipitations to remove fulvic and/or humic acids (Zohar et al., 2010).

Beyond a source of contaminant O, DOM includes  $\text{P}_{\text{org}}$  compounds that may undergo acid hydrolysis during the protocols described in Fig. 4, for example during the dissolution of brucite. Hydrolysis of  $\text{P}_{\text{org}}$  that is co-precipitated with brucite can yield  $\text{P}_i$ , with potential incorporation of water-O from the extracellular environment during acid hydrolysis (McLaughlin et al., 2006d). For example, in synthetic samples, 98.3% of the mass of P in ATP has been shown to co-precipitate with brucite, and 10.3% of the mass of P co-precipitated as ATP can undergo acid hydrolysis to yield  $\text{P}_i$  using the 1:1 concentrated acetic acid ( $\text{CH}_3\text{CO}_2\text{H}$ ) and 10M nitric acid ( $\text{HNO}_3$ ) system within Protocol 2 (Davies et al., 2014, Fig. 5). The  $\text{P}_i$  generated from hydrolysis of  $\text{P}_{\text{org}}$  will subsequently be incorporated within a  $\text{Ag}_3\text{PO}_4$  precipitate, potentially altering the bulk  $\delta^{18}\text{O}_p$  composition. Therefore, if the original  $\delta^{18}\text{O}_p$  of  $\text{P}_i$  is to be retained, effective removal of DOM must be achieved prior to introduction of conditions that could hydrolyse  $\text{P}_{\text{org}}$  compounds.

Although research to date has focussed on analysis of  $\delta^{18}\text{O}_p$  in  $\text{P}_i$ , the oxygen isotope composition of the phosphate moieties within  $\text{P}_{\text{org}}$  compounds ( $\delta^{18}\text{O}_{\text{Porg}}$ ) is also of significant interest, both as a constraint on the inheritance effects that influence  $\delta^{18}\text{O}_p$  in  $\text{P}_i$  regenerated from  $\text{P}_{\text{org}}$ , but also, potentially, as an inherent tracer of  $\text{P}_{\text{org}}$  cycling within aquatic ecosystems. Analysis of  $\delta^{18}\text{O}_{\text{Porg}}$  requires extraction of  $\text{P}_i$  from  $\text{P}_{\text{org}}$  followed by precipitation of a solid-phase P compound. Following a review of several extraction methods, Liang and Blake (2006a) concluded that extraction using UV radiation does not result in significant isotope effects on  $\delta^{18}\text{O}_{\text{Porg}}$ . However, we are not aware of any published research that has sought to characterise  $\delta^{18}\text{O}$  in  $\text{P}_{\text{org}}$  compounds from aquatic samples using the apparently robust UV radiation extraction method.

#### 4.2. Determination of $\delta^{18}\text{O}_p$ through EA-IRMS

On-line EA-IRMS has been utilised for analysis of  $\text{Ag}_3\text{PO}_4$ . Dried samples (typically 400–500  $\mu\text{g}$ ) are introduced in silver capsules as the traditional and cheaper tin alternatives can lead to significant deterioration of chromatography results (Lécuyer et al., 2007). Conversion of  $\text{Ag}_3\text{PO}_4$  to CO for analysis is achieved through pyrolysis at 1270 to 1450  $^\circ\text{C}$  in the presence of a carbon source to aid full conversion, typically nickelised graphite and/or glassy carbon (Vennemann et al., 2002; Lécuyer et al., 2007; Halas et al., 2011). Water vapour is removed through a water trap and CO is separated from other gaseous impurities through gas chromatography using purge-and-trap technology or a packed GC column (Meier-Augenstein, 1999; Fourel et al., 2011). Helium is used as a carrier gas to transfer the sample gas into a mass spectrometer via a continuous flow mode. Mass signals of 28 ( $^{12}\text{C}^{16}\text{O}$ ) and 30 ( $^{12}\text{C}^{18}\text{O}$ ;  $^{14}\text{C}^{16}\text{O}$ ;  $^{13}\text{C}^{17}\text{O}$ ) are integrated and compared to those in an independently introduced pulse of pure CO reference gas to calculate the  $^{18}\text{O}/^{16}\text{O}$  ratio. Subsequently, these ratios are calibrated to the VSMOW scale in per mill notation ( $\text{‰}_{\text{VSMOW}}$ ) using international reference materials, typically benzoic acids and barium sulfates (LaPorte et al., 2009; Halas et al., 2011). The precision for isotopic analysis is generally quoted as better than  $\pm 0.3\text{‰}_{\text{VSMOW}}$  (1 standard deviation) (Lécuyer et al., 2007; LaPorte et al., 2009; Halas et al., 2011).

A major analytical challenge remains the lack of internationally certified  $\text{Ag}_3\text{PO}_4$  standards, despite the long-term use of  $\text{Ag}_3\text{PO}_4$  in the determination of  $\delta^{18}\text{O}_p$  in archaeological and palaeoclimate studies (Stephan, 2000; Vennemann et al., 2002; Halas et al., 2011). Using materials other than  $\text{Ag}_3\text{PO}_4$  as calibration standards, such as benzoic acids, can introduce matrix effects in which differences in chemical composition between materials can influence the analysis, for example through differing temperatures at which efficient pyrolysis is achieved (Lécuyer et al., 2007). Some researchers have produced internal synthetic  $\text{Ag}_3\text{PO}_4$  standards from either internationally recognised  $\delta^{18}\text{O}$  standards such as NBS120c (phosphate rock distributed by NIST), or  $\text{KH}_2\text{PO}_4$  solutions equilibrated with  $^{18}\text{O}$ -enriched water (Lécuyer et al., 2007; Fourel et al., 2011; Halas et al., 2011). These synthetic  $\text{Ag}_3\text{PO}_4$  materials have been shown to be stable over long periods (at least 8 years), a key requirement for any international reference material (Lécuyer et al., 2007). A number of these uncertified compounds have been distributed to other laboratories

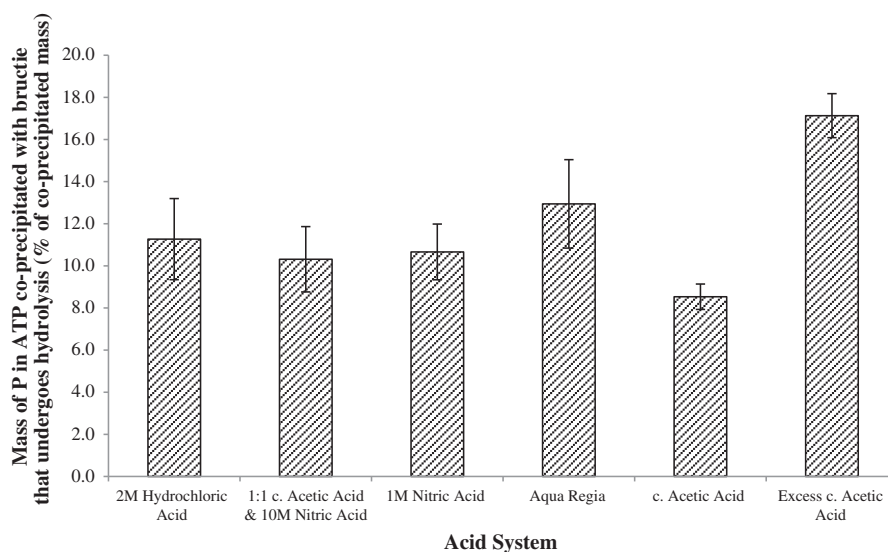


Fig. 5. Extent of ATP hydrolysis after co-precipitation with, and dissolution of, brucite using minimum volumes (for complete dissolution) of five different acid systems, and one system (Excess c.Acetic Acid) when an 8-fold volume excess of acid was used. Mean values given, error bars show  $\pm 1$  standard deviation ( $n = 3$  for each acid system; Davies et al., 2014).

and initial inter-laboratory comparison undertaken (Lécuyer et al., 2007; Halas et al., 2011). However, finite availability and the lack of a quality control network in production represent significant challenges for broader use of these materials.

Linearity effects, referring to a change in the reported isotope ratio due to a change in sample mass introduced to the EA-IRMS and thus the peak size of the CO ion in the mass spectrometer (Brand, 2004), can also affect determination of  $\delta^{18}\text{O}_p$ . If this effect is consistent and can be quantified then the measured isotope ratios can be corrected (Brand, 2004). One alternative solution to address linearity effects is to match CO ion peak heights across a run for both samples and standards by using a narrow sample mass range. However this is made more complicated by variable  $\text{Ag}_3\text{PO}_4$  pyrolysis efficiency and CO yield between samples, which can cause variations in peak heights. Difficulties have been found in ensuring complete conversion of  $\text{Ag}_3\text{PO}_4$  to CO in the TC/EA, with  $\text{Ag}_3\text{PO}_4$  requiring pyrolysis in the hot spot of a furnace (LaPorte et al., 2009). Whilst many compounds can achieve complete conversion easily (especially at temperatures exceeding 1400 °C), thereby ensuring accurate analysis of the bulk  $\delta^{18}\text{O}$ , incomplete conversion of other matrices, such as carbonates, has been implicated in isotope fractionation (Koziet, 1997; Kornexl et al., 1999). If conversion to CO is not complete then the reaction order of the O atoms in a compound becomes significant, with those being most strongly bound to the P atom being under-represented in the CO product. If this fractionation can be shown to affect all samples equally then the results can be properly calibrated. However, if the kinetic fractionation is not equivalent across all samples due to variable conversion to CO,

then correction becomes problematic. This highlights the need to ensure the pyrolysis of  $\text{Ag}_3\text{PO}_4$  is efficient and standardised across a sample run, which requires precise pyrolysis of samples within the hot spot of a furnace.

## 5. Synthesis of global $\delta^{18}\text{O}_p$ data from aquatic ecosystems

Recent research has highlighted the potential to use  $\delta^{18}\text{O}_p$  as both a tracer of P sources and as a dynamic tracer of metabolic processes affecting P cycling in aquatic ecosystems. The characterisation of significant sources of  $\text{P}_i$  within an ecosystem can be achieved using  $\delta^{18}\text{O}_p$  assuming:

- i)  $\delta^{18}\text{O}_p$  for major sources of  $\text{P}_i$  is constrained;
- ii) Individual sources of  $\text{P}_i$  possess distinct  $\delta^{18}\text{O}_p$  signatures;
- iii)  $\delta^{18}\text{O}_p$  for  $\text{P}_i$  sources is not equal to the theoretical equilibrium;
- iv)  $\delta^{18}\text{O}_p$  signatures for  $\text{P}_i$  sources are maintained and not rapidly over-printed by fractionation associated with metabolic processes.

Given these pre-requisites, if  $\delta^{18}\text{O}_p$  within an ecosystem tends towards the value of a particular source, inferences regarding the dominant  $\text{P}_i$  sources within ecosystems can be made. However, under conditions in which iv) above is not met and  $\delta^{18}\text{O}_p$  tends towards the theoretical equilibrium (Eqs. (2) or (3)),  $\delta^{18}\text{O}_p$  can then be used to probe the extent of intracellular metabolism of  $\text{P}_i$ . Insights into other metabolic processes, including biological  $\text{P}_i$  uptake and extracellular hydrolysis of  $\text{P}_{\text{org}}$ , may be gained through the kinetic and inheritance isotope effects associated with these processes. Table 1 synthesises published  $\delta^{18}\text{O}_p$  data currently available across a range of aquatic

**Table 1**  
Synthesis of global  $\delta^{18}\text{O}_p$  data derived from a range of aquatic ecosystems.

Type	Setting	Min $\delta^{18}\text{O}_p/\text{‰}$	Max $\delta^{18}\text{O}_p/\text{‰}$	Av $\delta^{18}\text{O}_p/\text{‰}$	1 $\sigma$	Number of samples	Geographical locations	Reference
Marine	Coastal surface waters	15.9	22.3	20.0	1.34	141	Monterey Bay, California; Long Island Sound, USA	McLaughlin et al. (2004); Colman et al. (2005); McLaughlin et al. (2006b)
	Open ocean surface (<200 m depth)	13.8	23.7	18.5	3.27	17	Monterey Bay, California; Sargasso Sea	McLaughlin et al. (2004); McLaughlin et al. (2013)
	Deep ocean (>200 m depth)	17.4	25.4	22.6	2.08	31	North Atlantic and Pacific Ocean tropical gyres; Sargasso Sea	McLaughlin et al. (2004); Colman et al. (2005); McLaughlin et al. (2013)
Estuarine		7.8	20.3	15.9	2.78	54	North San Francisco Bay California; Elkhorn Slough, California;	McLaughlin et al. (2004); McLaughlin et al. (2006a); McLaughlin et al. (2006c)
Freshwater	River (main)	8.6	15.2	12.4	1.46	32	San Joaquin River and Lake Tahoe California; Lake Erie, USA	Elsbury et al. (2009); McLaughlin et al. (2006a); Young et al. (2009)
	River (tributaries)	9.2	17.2	12.5	2.03	32	Elkhorn Slough, San Joaquin River and Lake Tahoe California; Lake Erie, USA	McLaughlin et al. (2006a); Young et al. (2009)
	Groundwater	15.1	22.4	18.6	2.13	9	Elkhorn Slough and San Joaquin River, California	Blake et al. (2001); McLaughlin et al. (2006a); Young et al. (2009)
	Lake (surface water – 1 m)	10	17.1	14.1	1.57	34	Lake Erie, USA	Elsbury et al. (2009)
	Lake (5.5–22 m)	8.4	15.8	13.6	1.58	25	Lake Erie, USA	Elsbury et al. (2009)
	Lake (58 m)	–	–	12.7	–	1	Lake Erie, USA	Elsbury et al. (2009)
	WWTP final effluent	8.4	18.4	12.9	4.02	14	Brittany, France;	Gruau et al. (2005); Young et al. (2009); McLaughlin et al. (2006c)
	Constructed wetlands (canals, inlet, interior and outlet)	20.0	25.5	21.5	1.32	25	Florida Everglades, USA	Li et al. (2011)
	Marsh	21.6	25.1	23.5	1.61	4	Florida Everglades, USA	Li et al. (2011)
Sediments	Marine porewater	12.8	26.6	22.2	2.59	119	Benguela Upwelling, South Atlantic	Goldhammer et al. (2011a)



ecosystems. Below, we consider the ways in which recent research has begun to explore the use of  $\delta^{18}\text{O}_p$  in aquatic ecosystems, highlighting the insights into P biogeochemistry that can be derived using this stable isotope technique.

### 5.1. Marine ecosystems

Marine upwelling zones, in which nutrient-rich bottom water is driven towards the surface, are areas of enhanced primary production and potentially rapid P turnover (Pennington and Chavez, 2000). Research in upwelling zones has reported  $\delta^{18}\text{O}_p$  values that approach equilibrium with water-O, indicating substantial intracellular metabolism of  $P_i$  in these coastal ecosystems (Colman et al., 2005; McLaughlin et al., 2006b). However, a lack of complete equilibrium between  $\delta^{18}\text{O}_p$  and water-O in upwelling zones suggests biological turnover of  $P_i$  relative to inputs from terrestrial and deep-water sources can be lower in coastal upwelling zones compared to the open ocean (McLaughlin et al., 2006b).

In the surface water of the open ocean,  $P_i$  concentrations in the photic zone can be extremely low (e.g. 0.2–1 nM in the Sargasso Sea), often limiting or co-limiting primary production (Wu et al., 2000). Under these conditions,  $\delta^{18}\text{O}_p$  values that tend towards temperature-dependent equilibrium with water-O have been reported, indicating extensive cycling of  $P_i$  through biomass (Colman et al., 2005). Insights into temporal variations in P sources and the extent of biological turnover of P within marine ecosystems can also be gained through  $\delta^{18}\text{O}_p$ . For example, in Monterey Bay, California, McLaughlin et al. (2006b) observed  $\delta^{18}\text{O}_p$  values in the upper water column (<200 m) that were significantly influenced by source contributions from terrestrial freshwater and from deeper water (500–800 m). However, during the spring–summer periods of upwelling,  $\delta^{18}\text{O}_p$  in the upper water column was isotopically heavier relative to non-upwelling autumn/winter periods, and more closely reflected the  $\delta^{18}\text{O}_p$  value expected at theoretical equilibrium. The most likely explanation for this trend is enhanced intracellular cycling of  $P_i$  by phytoplankton relative to  $P_i$  inputs during periods of upwelling. Upwelling periods provide nutrients to the surface zone that, combined with a greater intensity of sunlight in the spring–summer months, can enhance productivity and consequently biological turnover of  $P_i$  (McLaughlin et al., 2006b). Extensive extracellular–intracellular–extracellular cycling of  $P_i$  during the upwelling periods would lead to an over-printing of source  $\delta^{18}\text{O}_p$  signatures and a shift of  $\delta^{18}\text{O}_p$  in the extracellular environment towards equilibrium values. However, the data reported by McLaughlin et al. (2006b) suggest that the extent of extracellular–intracellular–extracellular was still not sufficient, even in the spring–summer period, to establish complete equilibrium between  $\delta^{18}\text{O}_p$  and water-O.

The preferential remineralisation of P over C from dissolved organic compounds has been observed in marine ecosystems, particularly in the euphotic zone (Clark et al., 1998; Aminot and Kerouel, 2004). This selective remineralisation of  $P_{org}$  is caused by the presence of extracellular enzymes and their action on  $P_{org}$  substrates, meaning that the turnover rate of  $P_{org}$  molecules in this environment is dependent on the specific enzymes and  $P_{org}$  compounds present. For example, it has been shown that the flux of dissolved ATP through an oligotrophic ocean ecosystem can be up to fivefold greater than for the bulk  $P_{org}$  compound pool (Bjorkman and Karl, 2005). McLaughlin et al. (2013), in research conducted in the Sargasso Sea, used  $\delta^{18}\text{O}_p$  to investigate the role of  $P_{org}$  hydrolysis in P-cycling in marine ecosystems. Based on the fractionation imparted on  $\delta^{18}\text{O}_p$  when  $P_i$  is regenerated from a specific  $P_{org}$  molecule following a specific hydrolysis pathway, McLaughlin et al. used Eq. (6) to estimate the fraction of  $P_i$  in samples that had been regenerated from  $P_{org}$ :

$$\%P_i \text{ from } P_{org} \text{ remineralisation} = \frac{(\delta^{18}\text{O}_{\text{sample}} - \delta^{18}\text{O}_{\text{eq}})}{(\delta^{18}\text{O}_{\text{rem}} - \delta^{18}\text{O}_{\text{eq}})} \times 100\% \quad (6)$$

where  $\delta^{18}\text{O}_{\text{rem}}$  is the calculated value of  $\delta^{18}\text{O}_p$  based on a particular combination of P substrate and hydrolysis pathway;  $\delta^{18}\text{O}_{\text{eq}}$  is the expected

equilibrium value of  $\delta^{18}\text{O}_p$  and  $\delta^{18}\text{O}_{\text{sample}}$  is the measured  $\delta^{18}\text{O}_p$  in a sample. McLaughlin et al. concluded that 5–80% of  $P_i$  present in the upper 200 m of an oligotrophic marine ecosystem was the product of  $P_{org}$  remineralisation, dependent on which enzyme/substrate system was used in Eq. (6). These data, combined with expressed enzyme activity and low  $P_i$  concentration, suggest that  $P_i$  regeneration from  $P_{org}$  was coupled with uptake by organisms to support metabolism. The proportion of  $P_i$  thought to derive from  $P_{org}$  remineralisation was significantly reduced (12–35%) at a monitoring station closest to the shoreline, suggesting increased  $P_i$  availability in this region and thus reduced requirement for  $P_{org}$  mineralisation. Despite the limited number of samples and large contrasts between differing enzyme/substrate systems, this research highlights the potential for using  $\delta^{18}\text{O}_p$  to gain insights into P cycling within the marine ecosystem, without the need to directly determine the concentrations or fluxes affecting  $P_i$  and  $P_{org}$  pools.

Colman et al. (2005) also demonstrated that  $\delta^{18}\text{O}_p$  was close to or at theoretical equilibrium in deep water samples from both the Atlantic (900–4000 m) and Pacific (300–3000 m) oceans. These data are consistent with intracellular equilibration between  $\delta^{18}\text{O}_p$  and water-O in surface waters, followed by advection of  $P_i$  to depth. However, small offsets ( $-1.5\%_{\text{ovSMOW}}$ ) from the expected theoretical equilibrium in  $P_i$  from deep-ocean samples collected below the thermocline were used by Colman et al. to infer that significant  $P_{org}$  mineralisation occurred in this zone, imparting a disequilibrium fractionation on  $\delta^{18}\text{O}_p$ . The disequilibrium effects were not fully overprinted by equilibrium fractionations, supporting estimates that 80–95% of the remineralised  $P_i$  was not utilised by the surrounding microorganisms in these deep-ocean waters to meet their P requirements, because metabolism in these zones is hypothesised to be limited by C and energy rather than by P. However, the size of the  $\delta^{18}\text{O}_p$  offset from equilibrium was smaller than that expected on the basis of  $P_i$  regeneration from  $P_{org}$  through the action of phosphohydrolases, suggesting partial biological turnover of  $P_i$  in these deep ocean environments (Colman et al., 2005).

### 5.2. Estuarine ecosystems

Source  $\delta^{18}\text{O}_p$  signatures have been shown to be retained within some estuaries (e.g. McLaughlin et al., 2006a). Source signals representing inputs derived from surrounding land (e.g. chemical fertilisers associated with runoff from agricultural land) and from other aquatic ecosystems (e.g. groundwater and surface water tributaries) are thought to dominate the bulk  $\delta^{18}\text{O}_p$  composition in many estuarine ecosystems, due to the short residence time of P compounds in tidal estuaries (McLaughlin et al., 2006a). The limited contact time with biomass in these ecosystems constrains the opportunity for metabolism of P, increasing the potential for source  $\delta^{18}\text{O}_p$  signatures to be retained. McLaughlin et al. (2006a) demonstrated that towards the mouth of Elkhorn Slough in California,  $\delta^{18}\text{O}_p$  was dominated by that of oceanic-derived  $P_i$  ( $\sim 20\%_{\text{ovSMOW}}$ ) due to tidal flushing of the ecosystem in this area. Similar  $\delta^{18}\text{O}_p$  values were also found upstream in the estuary. However, these were attributed to chemical fertilisers, entering the estuarine ecosystem through runoff from agricultural fields, that have an isotopic composition similar to that of the marine ore from which the fertilisers were formed. One mid-estuary site had a significantly lower  $\delta^{18}\text{O}_p$  composition. This observation, combined with the use of other natural tracers, suggested that groundwater discharge significantly affected bulk  $\delta^{18}\text{O}_p$  at this sampling location.  $\delta^{18}\text{O}_p$  can also provide insights into the presence of temporal and spatial patterns in  $P_i$  sources to estuaries. For example, it was observed that  $\delta^{18}\text{O}_p$  composition throughout the main estuary channel was not affected by either tidal or seasonal variations (McLaughlin et al., 2006a). However, a nearby harbour, close to the mouth of the estuary, did show evidence of tidal patterns through  $\delta^{18}\text{O}_p$ , with high tides associated with  $\delta^{18}\text{O}_p$  values higher and closer to that of oceanic-derived  $P_i$  and low tides associated with lower  $\delta^{18}\text{O}_p$  values towards those observed upstream in the estuary.

### 5.3. Sediments within aquatic ecosystems

$\delta^{18}\text{O}_p$  has also been used as a tracer of particulate inorganic P sources and sinks within aquatic ecosystems (Markel et al., 1994; Jaisi and Blake, 2010). The first major lacustrine site for this application was Lake Kinneret, situated in the Dead Sea Rift Valley (Markel et al., 1994). Markel et al. (1994) showed that  $\delta^{18}\text{O}_p$  in sediment bound- $P_i$  varied significantly with sediment grain size, with clay bound- $P_i$  demonstrating significant enrichment of  $\delta^{18}\text{O}_p$  compared to silt or sand bound- $P_i$ . These  $\delta^{18}\text{O}_p$  signatures enabled an internal P-cycling model of Lake Kinneret to be developed, which included major processes such as the sedimentation of both detrital and authigenic apatite and CCP ( $\text{Ca}_3(\text{HCO}_3)_2(\text{PO}_4)$ ), as well as the dissolution of these materials. In conjunction with other internal P-cycling studies of Lake Kinneret,  $\delta^{18}\text{O}_p$  was used as a tool to elucidate processes such as the release of P through dissolution of authigenic apatite and to support the quantitative analyses of sediment–lake interactions found in other studies. Further work has also shown that  $\delta^{18}\text{O}_p$  may act as a tracer of P source and as a paleotemperature proxy (particularly in detrital and authigenic P phases) in other ecosystems, such as the sediments of continental margins (Jaisi and Blake, 2010).

More recent methodological advances that enable accurate measurements of  $\delta^{18}\text{O}_p$  in samples containing a small mass of  $P_i$  have underpinned studies of  $\delta^{18}\text{O}_p$  within the porewaters of deep marine sediments (Goldhammer et al., 2011a,b). These studies demonstrate that  $\delta^{18}\text{O}_p$  in extracted porewater,  $P_i$  concentration profiles and two-endmember isotope mixing models can be used to determine whether marine sediments are dominated by P release (regeneration of  $P_i$  during microbial respiration of organic matter and the desorption of  $P_i$  from mineral phases), P burial from sources in the overlying water column, or  $P_i$  movement through advection or diffusion within the sediment column (Goldhammer et al., 2011a,b). In particular, it was shown that marine sediment porewaters demonstrate significant disequilibrium in  $\delta^{18}\text{O}_p$ , reflecting the dominance of disequilibrium effects associated with  $P_i$  regeneration from organic matter (Goldhammer et al., 2011a). However, it was noted that simple isotope mass balance models can overlook processes which could be significant within these environments and thus improvements need to be made for future analyses, including the construction of more complex and realistic isotope models that allow for the incorporation of physical mixing processes, such as diffusion and advection.

## 6. Freshwater ecosystems

Beyond the relatively intensive study of Lake Erie reported by Elsbury et al. (2009), the catalogue of  $\delta^{18}\text{O}_p$  data for freshwater ecosystems remains more constrained than for marine and terrestrial ecosystems. However, a limited number of initial studies have explored the use of  $\delta^{18}\text{O}_p$  to assess sources and metabolism of  $P_i$  in freshwater ecosystems.

### 6.1. Application of $\delta^{18}\text{O}_p$ to identify sources of P in freshwater ecosystems

A range of potential sources of P to freshwater ecosystems may be distinguished on the basis of  $\delta^{18}\text{O}_p$ , as long as the source isotope signature is not rapidly over-printed by isotopic fractionations associated with metabolism (e.g. Young et al., 2009; Li et al., 2011). However, this emerging dataset also shows potential for significant overlap in  $\delta^{18}\text{O}_p$  between a number of individual sources. For example, whilst  $\delta^{18}\text{O}_p$  may be used to distinguish P derived from fertilisers compared to WWTP effluents, no significant differences were found between  $\delta^{18}\text{O}_p$  across other potential sources, such as vegetation and detergents (Young et al., 2009). Table 2 synthesises currently available data regarding  $\delta^{18}\text{O}_p$  in potential sources of P to freshwaters, with average  $\delta^{18}\text{O}_p$  in these sources ranging from 13.2 to 21.5‰. However, note that for many of these sources, the size of the available dataset is currently small and geographically constrained.

Gruau et al. (2005) compared  $\delta^{18}\text{O}_p$  across three commonly used inorganic P fertilisers and effluent samples from three WWTPs in France. The origin of the phosphatic rock used in the production of the fertilisers was found to be significant in the resulting fertiliser  $\delta^{18}\text{O}_p$  (19.6–23.1‰ $_{\text{VSMOW}}$ ), which was consistent with the typical ranges for the two largest phosphatic rock suppliers to France–Morocco (18.5‰ $_{\text{VSMOW}}$  to 20.5‰ $_{\text{VSMOW}}$ ) and Florida (17.2‰ $_{\text{VSMOW}}$  to 23.2‰ $_{\text{VSMOW}}$ ) respectively. Laboratory dissolution experiments demonstrated no significant fractionation of  $\delta^{18}\text{O}_p$ , suggesting that fertiliser  $\delta^{18}\text{O}_p$  could be preserved in runoff from agricultural land (Gruau et al., 2005). Phosphate in WWTP effluents from the study by Gruau et al. was assumed to originate from two main sources: human waste, including faeces, urine and waste food disposal (30–50%) and phosphate-based detergents (50–70%). For these WWTP effluents,  $\delta^{18}\text{O}_p$  values fell in the narrow range of 16.6 to 18.1‰ $_{\text{VSMOW}}$ , whilst  $\delta^{18}\text{O}_p$  for a phosphate builder used in detergents fell within the same range (17.9‰ $_{\text{VSMOW}}$ ), indicating possible maintenance of source  $\delta^{18}\text{O}_p$  composition in the final WWTP effluent. However, the  $\delta^{18}\text{O}_p$  composition of WWTP effluents could also reflect microbial metabolism of  $P_{\text{org}}$ , as reported values also fall in the  $\delta^{18}\text{O}_p$  range expected following fractionation due to the degradation of  $P_{\text{org}}$  associated with microbial metabolism (Blake et al., 1997; Gruau et al., 2005). The difference between  $\delta^{18}\text{O}_p$  ranges for fertiliser- and WWTP-derived phosphate (<2‰ $_{\text{VSMOW}}$ ) reported by Gruau et al. was statistically significant. However, given the relatively small absolute difference, and the variability in  $\delta^{18}\text{O}_p$  of the two sources (ranges for both sources were  $\geq 1.5\%$  $_{\text{VSMOW}}$ ), these authors concluded that  $\delta^{18}\text{O}_p$  may not be suitable for determining the sources of anthropogenic  $P_i$ .

However, the  $\delta^{18}\text{O}_p$  of other potentially significant sources of  $P_i$  to freshwaters has not been thoroughly characterised, including soil leachate, waste from aquaculture and, in particular, groundwater and septic tank discharge. Where sources such as inorganic fertiliser or WWTP effluent have begun to be characterised, available data tend to focus on specific geographical regions such as California (USA) (Young et al., 2009), the Great Lakes (USA) (Elsbury et al., 2009; Young et al., 2009)

**Table 2**  
Observed  $\delta^{18}\text{O}_p$  values for potential P sources to freshwater ecosystems (Ayliffe et al., 1992; Gruau et al., 2005; McLaughlin et al., 2006a; Young et al., 2009; Li et al., 2011; Gross et al., 2013).

Source	Min $\delta^{18}\text{O}_p/\%$	Max $\delta^{18}\text{O}_p/\%$	Av $\delta^{18}\text{O}_p/\%$	1 $\sigma$	Number of samples	Geographical location
Chemical fertilisers	15.5	25.3	22.1	2.32	33	–
Fertiliser ore and processing	18.2	21.6	20	1.43	5	Israel
†Aerosols and dust	14.2	24.9	20.1	2.17	17	Israel
WWTP final effluent and during processing	8.4	18.4	13.5	3.5	18	USA; France
Detergent	13.3	18.6	16.8	1.83	7	–
Toothpaste	–	–	17.7	–	1	–
†Animal faeces	15.7	23.1	20	1.82	11	South Pacific; California, USA
†Soil leachate	17.9	19.1	18.5	0.474	5	Israel
Compost	23.3	27	25.2	2.62	2	California, USA
†Vegetation leachate (Live, Dead and Decayed)	14.2	23.1	16.8	2	27	California, USA

† Water soluble  $P_i$  fractions.

and Brittany (France) (Gruau et al., 2005). A larger body of research is required to extend the isotopic characterisation of sources of  $P_i$  to other geographical locations. Further, the majority of existing studies provide only snapshots in time, and the potential for temporal changes in  $\delta^{18}O_p$  of sources has not been fully constrained, for example within WWTP effluent in which the dominant sources and treatment efficiency may change significantly over annual, seasonal or daily timescales.

Analysis of  $\delta^{18}O_p$  in natural freshwater samples has demonstrated that disequilibrium isotopic compositions can persist in these environments (Young et al., 2009; Li et al., 2011). Young et al. (2009) compared  $\delta^{18}O_p$  in the tributaries to three major US freshwater bodies, Lake Erie, the San Joaquin River and Lake Tahoe, to a theoretical equilibrium value. Only two of the 40 samples analysed in the study fell within the 95% confidence limit for the theoretical isotopic equilibrium. This was also true for two groundwater samples in the San Joaquin catchment, in which data indicated that both groundwater samples were enriched in  $^{18}O$  relative to the expected equilibrium isotopic composition.

Similar conclusions were reached by Li et al. (2011) who showed that anthropogenic phosphate fertilisers could be traced within a freshwater wetland in the Everglades National Park, USA. Inputs of P from artificial fertilisers in the Everglades Agricultural Area (EAA) have contributed to mean concentrations of P in runoff being 20-fold greater than in non-agricultural areas of the national park. The average  $\delta^{18}O$  of fertilisers used within the EAA was found to be  $24.4 \pm 0.7\text{‰}_{\text{VSMOW}}$  between April 2005 and March 2006. Analysis revealed that  $\delta^{18}O_p$  was at equilibrium with the ambient water in one constructed wetland (April 2005), although later sampling in July and March 2006 determined that  $\delta^{18}O_p$  was strongly governed by fertiliser inputs, being enriched with  $\delta^{18}O$  compared to the expected equilibrium, particularly close to the inlet from the EAA. Seasonal variation was also observed, with  $\delta^{18}O_p$  being enriched in the colder, winter months relative to samples collected in July. These observations may reflect differences in metabolic activity between summer and winter months, or alternatively reflect the timing of fertiliser applications. At least within the specific catchments reported in research by Li et al., disequilibrium isotope composition was shown to be maintained in  $P_i$  under certain circumstances. However, the maintenance or otherwise of disequilibrium  $\delta^{18}O_p$  remains to be evaluated across a wider range of spatial and temporal scales for freshwater ecosystems.

If disequilibrium isotope compositions do persist in freshwater ecosystems and the major  $P_i$  sources differ significantly in  $\delta^{18}O_p$ , then it would be possible to utilise  $\delta^{18}O_p$  in source apportionment calculations. Li et al. (2011) estimated the proportion of  $P_i$  derived from artificial fertiliser inputs (F) using a two-system mass balance model (Eq. (7)), the theoretical equilibrium isotope composition ( $\delta^{18}O_{\text{recycled}}$ ), the isotopic composition of fertiliser ( $\delta^{18}O_{\text{fertiliser}}$ ) and the isotopic composition of  $P_i$  measured in a sample ( $\delta^{18}O_p$ ).

$$F = \frac{(\delta^{18}O_p - \delta^{18}O_{\text{recycled}})}{(\delta^{18}O_{\text{fertiliser}} - \delta^{18}O_{\text{recycled}})} \times 100\% \quad (7)$$

This mass balance equation is based on the assumption that only fertiliser inputs and biologically recycled phosphate make up the  $P_i$  of the wetland. Using this equation, it was estimated that artificial fertiliser inputs into the wetland contributed between 15 and 100% of the total dissolved  $P_i$  content, with the lowest and highest proportions found in samples collected in April and in March respectively. Clearly, more complicated mass balance approaches would be required for more complex ecosystems with multiple sources of P. However, if sources, and any fractionation effects, could be sufficiently well constrained, then it would be theoretically possible to build mixing models to estimate the relative contribution from different sources to P within receiving waters.

## 6.2. Evidence of metabolism of P in freshwater ecosystems from $\delta^{18}O_p$ analysis

Evidence of temperature-dependent equilibrium fractionation between  $\delta^{18}O_p$  and  $\delta^{18}O_w$  has also been used to infer full or partial metabolism of  $P_i$  in some freshwater ecosystems (Blake et al., 2001; Elsbury et al., 2009). For example, Blake et al. (2001) analysed  $\delta^{18}O_p$  within groundwater samples from a shallow  $P_i$ -rich aquifer in Cape Cod, Massachusetts, USA. Significant inputs of  $P_i$  to groundwater resulted from sewage contamination, causing  $P_i$  concentrations to rise to 30–108  $\mu\text{mol/L}$ . Full equilibration between  $\delta^{18}O_p$  and  $\delta^{18}O_w$  in the surrounding groundwater was not achieved, probably due to low DOC concentrations meaning that elevated  $P_i$  concentrations were above metabolic requirements. However, a strong positive correlation was found between  $\delta^{18}O_p$  and  $\delta^{18}O_w$ , suggesting partial metabolism of P and that  $\delta^{18}O_p$  could be used to provide insights into metabolism of  $P_i$  in groundwater.

The first major study of the application of  $\delta^{18}O_p$  in the water column of a lacustrine setting was conducted in Lake Erie, USA and emphasises the potential to use  $\delta^{18}O_p$  within freshwater P cycling studies to identify trends that cannot be detected through analysis of concentration alone (Elsbury et al., 2009). Despite strict regulations on point sources of P since the 1970s and no observed increase in influx to the lake,  $P_i$  concentration in the Central Basin of Lake Erie has increased since 1990 (Elsbury et al., 2009). As changes in inflow  $P_i$  fluxes could not explain the observed increase in  $P_i$  concentration, analysis of  $\delta^{18}O_p$  was initially used in an attempt to identify additional sources of  $P_i$ .

Weighted average riverine  $\delta^{18}O_p$  feeding the lake was considerably depleted in  $^{18}O$  compared to that of the theoretical equilibrium  $\delta^{18}O_p$ , whereas the  $\delta^{18}O_p$  values observed in Lake Erie were generally enriched in  $^{18}O$  compared to those of the seven sampled tributaries, particularly in the Central Basin. Any samples with  $\delta^{18}O_p$  between that of the theoretical equilibrium and the weighted riverine signal ( $+11\text{‰}_{\text{VSMOW}}$ ) could potentially be attributed to incomplete equilibration of the O within riverine phosphate with water-O in the lake through metabolism of  $P_i$ . Consequently, Elsbury et al. (2009) concluded that samples with  $\delta^{18}O_p$  values outside of the potential mixing region must be derived from an additional (unconstrained) source of  $P_i$ . Potential sources included smaller tributaries that were not sampled in the study; however this was deemed improbable given the large  $P_i$  fluxes required to achieve the observed concentration increase in the Central Basin. Alternatively, disequilibrium isotopic effects could be operating in the lake, leading to an increase of  $\delta^{18}O_p$  in lake  $P_i$  through processes associated with a kinetic fractionation (Blake et al., 2005). However, the most likely explanation for the observed increase in  $P_i$  concentration was concluded to be end-member mixing of riverine  $P_i$  with an isotopically enriched source(s) of  $P_i$  ( $> +17\text{‰}_{\text{VSMOW}}$ ), which was suggested by Elsbury et al. to be associated with remineralisation of  $^{18}O$ -enriched  $P_{\text{org}}$  within the bed sediments, followed by release of  $P_i$  from the lake sediments to the water column.

## 7. Concluding remarks and priorities for future research

The use of  $\delta^{18}O_p$  in research examining P cycling in natural ecosystems is at an embryonic stage, particularly with respect to freshwater ecosystems. This stable isotope tracer has the potential to offer new insights into both the relative importance of different sources of P to ecosystems, and the extent to which P from individual sources is linked to metabolic activity within ecosystems. These insights would have important implications for understanding the reaction mechanisms controlling P biogeochemistry in nature, and for the design and targeting of future policies and practices to deliver more sustainable stewardship of P. Below, we conclude by identifying four key areas for development of  $\delta^{18}O_p$  research that would enable the potential of this isotope tracer to be more fully realised:

- Develop robust analytical protocols for  $\delta^{18}O_p$  in freshwater matrices. The primary challenge here is to avoid errors in the determination of  $\delta^{18}O_p$

due to incorporation of contaminant O in a precipitate that is subsequently pyrolysed. In freshwater matrices this involves excluding O derived from DOC compounds and from oxyanions other than  $P_i$  from the final precipitate. However, it also requires removal of  $P_{org}$  compounds from an aquatic matrix at the appropriate stage of an analytical protocol to ensure that hydrolysis of  $P_{org}$  and production of contaminant  $P_i$  is avoided. Finally, despite recent inter-laboratory comparison of the isotope composition of various sources of  $Ag_3PO_4$ , the need for an internationally certified  $Ag_3PO_4$  standard has yet to be addressed.

- *Expand the global library of  $\delta^{18}O_p$  within sources of P to freshwaters.* Proper characterisation of  $\delta^{18}O_p$  in P sources provides the basis for using this stable isotope tracer as a source apportionment tool. Initial data suggests that distinguishing certain sources on the basis of  $\delta^{18}O_p$  may be possible, whilst the isotopic composition of other sources of  $P_i$  may overlap. However, the global database of  $\delta^{18}O_p$  in sources of P remains limited. The priorities are: i) to characterise sources that are not currently included in the global database, for example  $P_i$  within potable water supplies and within septic tank discharges; ii) to extend the geographical extent to which individual sources are characterised, for example covering regions in which inorganic P fertiliser is derived from differing rock P reserves, or regions in which differing  $\delta^{18}O_w$  may drive differences in  $\delta^{18}O_p$  within the final effluent of WWTPs; and iii) to constrain the temporal variation in  $\delta^{18}O_p$  within key sources of P, for example associated with seasonal or diurnal cycles in the final effluent from WWTPs.
- *Focus on the potential of  $\delta^{18}O_p$  to provide insight into biogeochemical processes controlling P cycling.*  $\delta^{18}O_p$  will not act as a conservative tracer for the source of P where metabolic reactions significantly influence the P cycle within an ecosystem. Whilst clearly a constraint on source apportionment studies, the isotope fractionations that occur alongside metabolic processes provide the opportunity to use  $\delta^{18}O_p$  to explore the reaction mechanisms controlling P cycling. Specifically, the balance between equilibrium and disequilibrium fractionations can provide insight into the relative importance of intracellular metabolism of  $P_i$  versus the extracellular regeneration of  $P_i$  from  $P_{org}$ . This requires future research to determine and interpret variations in  $\delta^{18}O_p$ , both through time (for example, from inter-annual or seasonal cycles to event-driven variations within lake or river ecosystems) and through space (for example, tracking downstream changes in  $\delta^{18}O_p$  associated with point or diffuse inputs of P to aquatic ecosystems). Further research could also focus on analysis of  $\delta^{18}O$  within the phosphate moieties of  $P_{org}$  to better understand the cycling of  $P_{org}$  within aquatic ecosystems.
- *Couple  $\delta^{18}O_p$  with parallel techniques to develop an integrated isotope framework across C, N and P cycles.* Whilst analysis of  $\delta^{18}O_p$  is beginning to emerge as a research tool in aquatic ecosystems, parallel stable isotope techniques have a longer history of application for N ( $^{15}N/^{14}N$  in ammonium and  $^{15}N/^{14}N$ ,  $^{18}O/^{16}O$  in nitrate) and for C ( $^{13}C/^{12}C$ ). Coupling analysis of  $\delta^{18}O_p$  with that of stable isotopes in N and C compounds would potentially offer new insights into process interactions between C, N and P biogeochemistry. A coupled stable isotope framework could draw on natural abundance approaches or, ultimately, on isotopic labelling studies based on production of labelled  $\delta^{18}O_p$  to complement isotopically labelled sources of N and C. Finally, by coupling stable isotope and radioisotope techniques, processes that govern the cycling of P within aquatic ecosystems across both the short and long term could be more readily constrained.

## Acknowledgements

This work was supported by a Natural Environment Research Council Case studentship (NE/K501001/1) and by funding from the British Geological Survey to CD. DCG publishes with the permission of

the Executive Director, British Geological Survey (NERC). We are grateful to two anonymous reviewers for their comments that helped to significantly improve the manuscript.

## References

- Aminot A, Kerouel R. Dissolved organic carbon, nitrogen and phosphorus in the N-E Atlantic and the N-W Mediterranean with particular reference to non-refractory fractions and degradation. *Deep Sea Res I Oceanogr Res Pap* 2004;51:1975.
- Ammerman JW. Role of ecto-phosphohydrolases in phosphorus regeneration in estuarine and coastal ecosystems. *Microb Enzymes Aquat Environ* 1991;165.
- Ammerman JW, Azam F. Bacterial 5'-nucleotidase in aquatic ecosystems: a novel mechanism of phosphorus regeneration. *Science* 1985;227:1338.
- Ayliffe LK, Veeh HH, Chivas AR. Oxygen isotopes of phosphate and the Origin of Island apatite deposits. *Earth Planet Sci Lett* 1992;108:119.
- Beardsley TM. Peak Phosphorus. *Bioscience* 2011;61:91.
- Benitez-Nelson CR. The biogeochemical cycling of phosphorus in marine systems. *Earth Sci Rev* 2000;51:109.
- Benitez-Nelson CR, Buesseler KO. Variability of inorganic and organic phosphorus turnover rates in the coastal ocean. *Nature* 1999;398:502.
- Beveridge NAS, Shackleton NJ. Carbon isotopes in recent planktonic-foraminifera — a record of anthropogenic  $CO_2$  invasion of the surface ocean. *Earth Planet Sci Lett* 1994;126:259.
- Björkman K, Karl DM. Bioavailability of inorganic and organic phosphorus-compounds to natural assemblages of microorganisms in Hawaiian coastal waters. *Mar Ecol Prog Ser* 1994;111:265.
- Björkman KM, Karl DM. Presence of dissolved nucleotides in the North Pacific Subtropical Gyre and their role in cycling of dissolved organic phosphorus. *Aquat Microb Ecol* 2005;39:193.
- Blake RE, Alt JC, Martini AM. Oxygen isotope ratios of  $PO_4$ : an inorganic indicator of enzymatic activity and P metabolism and a new biomarker in the search for life. *Proc Natl Acad Sci U S A* 2001;98:2148.
- Blake RE, O'Neil JR, Garcia GA. Oxygen isotope systematics of biologically mediated reactions of phosphate: I. Microbial degradation of organophosphorus compounds. *Geochim Cosmochim Acta* 1997;61:4411.
- Blake RE, O'Neil JR, Surkov AV. Biogeochemical cycling of phosphorus: insights from oxygen isotope effects of phosphoenzymes. *Am J Sci* 2005;305:596.
- Bowes MJ, Smith JT, Jarvie HP, Neal C. Modelling of phosphorus inputs to rivers from diffuse and point sources. *Sci Total Environ* 2008;395:125.
- Brand WA. Mass spectrometer hardware for analyzing stable isotope ratios. In: De Groot PA, editor. *Handbook of stable isotope analytical techniques*; 2004.
- Bryant JD, Luz B, Froelich PN. Oxygen isotopic composition of fossil horse tooth phosphate as a record of continental paleoclimate. *Palaeogeogr Palaeoclimatol Palaeoecol* 1994;107:303.
- Childers DL, Corman J, Edwards M, Elser JJ. Sustainability challenges of phosphorus and food: solutions from closing the human phosphorus cycle. *Bioscience* 2011;61:117.
- Chrost RJ. Environmental-control of the synthesis and activity of aquatic microbial ectoenzymes. *Microb Enzymes Aquat Environ* 1991;29.
- Clark LL, Ingall ED, Benner R. Marine phosphorus is selectively remineralized. *Nature* 1998;393:426.
- Cohn M. Phosphate-water exchange reaction catalyzed by inorganic pyrophosphatase of yeast. *J Biol Chem* 1958;230:369.
- Colman AS. The oxygen composition of dissolved inorganic phosphate and the marine phosphorus cycle [Ph.D. dissertation] Yale University; 2002.
- Colman AS, Blake RE, Karl DM, Fogel ML, Turekian KK. Marine phosphate oxygen isotopes and organic matter remineralization in the oceans. *Proc Natl Acad Sci U S A* 2005;102:13023.
- Cooperman BS, Baykov AA, Lahti R. Evolutionary conservation of the active-site of soluble inorganic pyrophosphatase. *Trends Biochem Sci* 1992;17:262.
- Cordell D, Drangert JO, White S. The story of phosphorus: global food security and food for thought. *Glob Environ Change Human Policy Dimen* 2009;19:292.
- Davies C, Surridge B, Goody D. Could organic phosphorus compounds contaminate the analysis of phosphate oxygen isotopes in freshwater matrices? *Geophys Res Abstr* 2014;16. [EGU2014-7620].
- Dettman DL, Kohn MJ, Quade J, Ryerson FJ, Ojha TP, Hamidullah S. Seasonal stable isotope evidence for a strong Asian monsoon throughout the past 10.7 m.y. *Geology* 2001;29:31.
- Dillon PJ, Kirchner WB. Effects of geology and land-use on export of phosphorus from watersheds. *Water Res* 1975;9:135.
- Elsbury KE, Paytan A, Ostrom NE, Kendall C, Young MB, McLaughlin K, et al. Using oxygen isotopes of phosphate to trace phosphorus sources and cycling in Lake Erie. *Environ Sci Technol* 2009;43:3108.
- Elser J, Bennett E. A broken biogeochemical cycle. *Nature* 2011;478:29.
- Filippelli GM. The global phosphorus cycle: past, present, and future. *Elements* 2008;4:89.
- Firsching F. Precipitation of silver phosphate from homogeneous solution. *Anal Chem* 1961;33:873.
- Fourel F, Martineau F, Lecuyer C, Kupka HJ, Lange L, Ojeimi C, et al. O-18/O-16 ratio measurements of inorganic and organic materials by elemental analysis-pyrolysis-isotope ratio mass spectrometry continuous-flow techniques. *Rapid Commun Mass Spectrom* 2011;25:2691.
- Fricke HC, Clyde WC, O'Neil JR, Gingerich PD. Evidence for rapid climate change in North America during the latest Paleocene thermal maximum: oxygen isotope compositions of biogenic phosphate from the Bighorn Basin (Wyoming). *Earth Planet Sci Lett* 1998;160:193.

- Fricke HC, O'Neil JR. Inter- and intra-tooth variation in the oxygen isotope composition of mammalian tooth enamel phosphate: Implications for palaeoclimatological and palaeobiological research. *Palaeogeogr Palaeoclimatol Palaeoecol* 1996;126:91.
- Gajewski E, Steckler DK, Goldberg RN. Thermodynamics of the hydrolysis of adenosine 5'-triphosphate to adenosine 5'-diphosphate. *J Biol Chem* 1986;261:2733.
- Goldammer T, Brunner B, Bernasconi SM, Ferdelman TG, Zabel M. Phosphate oxygen isotopes: insights into sedimentary phosphorus cycling from the Benguela upwelling system. *Geochim Cosmochim Acta* 2011a;75:3741.
- Goldammer T, Max T, Brunner B, Einsiedl F, Zabel M. Marine sediment pore-water profiles of phosphate  $\delta^{18}\text{O}$  using a refined micro-extraction. *Limnol Oceanogr Methods* 2011b;9:110.
- Gross A, Nishri A, Angert A. Use of phosphate oxygen isotopes for identifying atmospheric-P sources: a case study at Lake Kinneret. *Environ Sci Technol* 2013;47:2721.
- Gruau G, Legeas M, Riou C, Gallacrier E, Martineau F, Hénon O. The oxygen isotope composition of dissolved anthropogenic phosphates: a new tool for eutrophication research? *Water Res* 2005;39:232.
- Habicht KS, Canfield DE. Sulfur isotope fractionation during bacterial sulfate reduction in organic-rich sediments. *Geochim Cosmochim Acta* 1997;61:5351.
- Halas S, Skrzypek G, Meier-Augenstein W, Pelc A, Kemp HF. Inter-laboratory calibration of new silver orthophosphate comparison materials for the stable oxygen isotope analysis of phosphates. *Rapid Commun Mass Spectrom* 2011;25:579.
- Hoefs J. Stable isotope geochemistry. 6th ed. Berlin Heidelberg: Springer-Verlag; 2008. p. 1–34.
- Holt MS, Fox KK, Daniel M, Buckland H. Linear alkylbenzene sulfonate and boron monitoring in four catchments in the UK contribution to GREAT-ER #11. *Sci Total Environ* 2003;314:271.
- Jaisi DP, Blake RE. Tracing sources and cycling of phosphorus in Peru Margin sediments using oxygen isotopes in authigenic and detrital phosphates. *Geochim Cosmochim Acta* 2010;74:3199.
- Jaisi DP, Blake RE, Kukkadapu RK. Fractionation of oxygen isotopes in phosphate during its interactions with iron oxides. *Geochim Cosmochim Acta* 2010;74:1309.
- Jaisi DP, Kukkadapu RK, Stout LM, Varga T, Blake RE. Biotic and abiotic pathways of phosphorus cycling in minerals and sediments: insights from oxygen isotope ratios in phosphate. *Environ Sci Technol* 2011;45:6254.
- Jarvie HP, Neal C, Warwick A, White J, Neal M, Wickham HD, et al. Phosphorus uptake into algal biofilms in a lowland chalk river. *Sci Total Environ* 2002;282:353.
- Jasinski SM. Phosphate Rock. Mineral Commodity Summaries. Distributor: U.S. Geological Survey 2012. [http://minerals.usgs.gov/minerals/pubs/commodity/phosphate\\_rock/mcs-2012-phosp.pdf](http://minerals.usgs.gov/minerals/pubs/commodity/phosphate_rock/mcs-2012-phosp.pdf).
- Karhu J, Epstein S. The implication of the oxygen isotope records in coexisting cherts and phosphates. *Geochim Cosmochim Acta* 1986;50:1745.
- Karl DM. Aquatic ecology — phosphorus, the staff of life. *Nature* 2000;406:31.
- Karl DM, Tien G. Magic: a sensitive and precise method for measuring dissolved phosphorus in aquatic environments. *Limnol Oceanogr* 1992;37:105.
- Karl DM, Tien G. Temporal variability in dissolved phosphorus concentrations in the subtropical North Pacific Ocean. *Mar Chem* 1997;56:77.
- Kolodny Y, Luz B, Navon O. Oxygen isotope variations in phosphate of biogenic apatites. 1. Fish bone apatite — rechecking the rules of the game. *Earth Planet Sci Lett* 1983;64:398.
- Kornel BE, Gehre M, Höfling R, Werner RA. On-line  $\delta^{18}\text{O}$  measurement of organic and inorganic substances. *Rapid Commun Mass Spectrom* 1999;13:1685.
- Koziet J. Isotope ratio mass spectrometric method for the on-line determination of oxygen-18 in organic matter. *J Mass Spectrom* 1997;32:103.
- LaPorte DF, Holmden C, Patterson WP, Prokopiuk T, Eglinton BM. Oxygen isotope analysis of phosphate: improved precision using TC/EA CF-IRMS. *J Mass Spectrom* 2009;44:879.
- Lécuyer C. Oxygen isotope analysis of phosphate. In: De Groot PA, editor. *Handbook of stable isotope analytical techniques*. China: Elsevier; 2004. p. 482–96.
- Lécuyer C, Fourel F, Martineau F, Amiot R, Bernard A, Daux V, et al. High-precision determination of  $^{18}\text{O}/^{16}\text{O}$  ratios of silver phosphate by EA-pyrolysis-IRMS continuous flow technique. *J Mass Spectrom* 2007;42:36.
- Lécuyer C, Grandjean P, O'Neil JR, Cappelletti H, Martineau F. Thermal excursions in the ocean at the Cretaceous–Tertiary boundary (Northern Morocco) —  $\delta^{18}\text{O}$  record of phosphatic fish debris. *Palaeogeogr Palaeoclimatol Palaeoecol* 1993;105:235.
- Lécuyer C, Grandjean P, Paris F, Robardet M, Robineau D. Deciphering “temperature” and “salinity” from biogenic phosphates: the  $\delta^{18}\text{O}$  of coexisting fishes and mammals of the Middle Miocene sea of western France. *Palaeogeogr Palaeoclimatol Palaeoecol* 1996;126:61.
- Levine SN, Stainton MP, Schindler DW. A radiotracer study of phosphorus cycling in a eutrophic Canadian Shield Lake, Lake-227, Northwestern Ontario. *Can J Fish Aquat Sci* 1986;43:366.
- Li X, Wang Y, Stern J, Cu BH. Isotopic evidence for the source and fate of phosphorus in Everglades wetland ecosystems. *Appl Geochem* 2011;26:688.
- Liang Y, Blake RE. Oxygen isotope composition of phosphate in organic compounds: isotope effects of extraction methods. *Org Geochem* 2006a;37:1263.
- Liang Y, Blake RE. Oxygen isotope signature of P-i regeneration from organic compounds by phosphomonoesterases and photooxidation. *Geochim Cosmochim Acta* 2006b;70:3957.
- Liang Y, Blake RE. Oxygen isotope fractionation between apatite and aqueous-phase phosphate: 20–45 °C. *Chem Geol* 2007;238:121.
- Liu Y, Villalba G, Ayres RU, Schroder H. Global phosphorus flows and environmental impacts from a consumption perspective. *J Ind Ecol* 2008;12:229.
- Longinelli A, Bartelloni M, Corceci G. Isotopic cycle of oceanic phosphate. 1. *Earth Planet Sci Lett* 1976;32:389.
- Longinelli A, Nuti S. Revised phosphate-water isotopic temperature scale. *Earth Planet Sci Lett* 1973;19:373.
- Ma HZ, Allen HE, Yin YJ. Characterization of isolated fractions of dissolved organic matter from natural waters and a wastewater effluent. *Water Res* 2001;35:985.
- Markel D, Kolodny Y, Luz B, Nishri A. Phosphorus cycling and phosphorus sources in Lake Kinneret: tracing by oxygen isotopes in phosphate. *Israel J Earth Sci* 1994;43:165.
- McLaughlin K, Cade-Menun BJ, Paytan A. The oxygen isotopic composition of phosphate in Elkhorn Slough, California: a tracer for phosphate sources. *Estuar Coast Shelf Sci* 2006a;70:499.
- McLaughlin K, Chavez F, Pennington JT, Paytan A. A time series investigation of the oxygen isotopic composition of dissolved inorganic phosphate in Monterey Bay, California. *Limnol Oceanogr* 2006b;51:2370.
- McLaughlin K, Kendall C, Silva SR, Young M, Paytan A. Phosphate oxygen isotope ratios as a tracer for sources and cycling of phosphate in North San Francisco Bay, California. *J Geophys Res Biogeosci* 2006c;111.
- McLaughlin K, Paytan A, Kendall C, Silva S. Oxygen isotopes of phosphatic compounds—application for marine particulate matter, sediments and soils. *Mar Chem* 2006d;98:148.
- McLaughlin K, Silva S, Kendall C, Stuart-Williams H, Paytan A. A precise method for the analysis of  $\delta^{18}\text{O}$  of dissolved inorganic phosphate in seawater. *Limnol Oceanogr Methods* 2004;2:202.
- McLaughlin K, Sohm JA, Cutter GA, Lomas MW, Paytan A. Phosphorus cycling in the Sargasso Sea: investigation using the oxygen isotopic composition of phosphate, enzyme-labelled fluorescence, and turnover times. *Global Biogeochem Cycles* 2013;27:375.
- Meier-Augenstein W. Applied gas chromatography coupled to isotope ratio mass spectrometry. *J Chromatogr A* 1999;842:351.
- Mooney-Slater RCL. Polymorphic forms of bismuth phosphate. *Z Kristallogr* 1962;117:371.
- Nakai N, Jensen ML. The kinetic isotope effect in the bacterial reduction and oxidation of sulfur. *Geochim Cosmochim Acta* 1964;28:1893.
- Neal C, Jarvie HP, Howarth SM, Whitehead PG, Williams RJ, Neal M, et al. The water duality of the River Kennet: initial observations on a lowland chalk stream impacted by sewage inputs and phosphorus remediation. *Sci Total Environ* 2000;251:477.
- Newton R, Bottrell S. Stable isotopes of carbon and sulphur as indicators of environmental change: past and present. *J Geol Soc* 2007;164:691.
- O'Neil JR, Venemann TW, McKenzie WF. Effects of speciation on equilibrium fractionations and rates of oxygen isotope exchange between  $(\text{PO}_4)(\text{aq})$  and  $\text{H}_2\text{O}$ . *Geochim Cosmochim Acta* 2003;67:3135.
- Pennington JT, Chavez FP. Seasonal fluctuations of temperature, salinity, nitrate, chlorophyll and primary production at station H3/M1 over 1989–1996 in Monterey Bay, California. *Deep Sea Res II Top Stud Oceanogr* 2000;47:947.
- Pucéat E, Joachimski MM, Bouilloux A, Monna F, Bonin A, Motreuil S, et al. Revised phosphate–water fractionation equation reassessing paleotemperatures derived from biogenic apatite. *Earth Planet Sci Lett* 2010;298:135.
- Ruttenberg KC. 8.13 — The global phosphorus cycle. *Treatise on Geochemistry*, 8. Biogeochemistry; 2003. p. 585.
- Scott TM, Rose JB, Jenkins TM, Farrah SR, Lukasik J. Microbial source tracking: current methodology and future directions. *Appl Environ Microbiol* 2002;68:5796.
- Seyhan D, Weikard HP, Van Ierland E. An economic model of long-term phosphorus extraction and recycling. *Resour Conserv Recycl* 2012;61:103.
- Shemesh A, Kolodny Y. Oxygen isotopes variations in phosphorites from the Southeastern Tethys. *Israel J Earth Sci* 1988;37:1.
- Simpson JM, Santo Domingo JW, Reasoner DJ. Microbial source tracking: state of the science. *Environ Sci Technol* 2002;36:5279.
- Slomp CP. Give more priority to phosphorus studies. *Nature* 2011;478:459.
- Smith JT, Bowes MJ, Cailles CR. A review and model assessment of  $(^{32}\text{P})$  and  $(^{33}\text{P})$  uptake to biota in freshwater systems. *J Environ Radioact* 2011;102:317.
- Smith SV, Serruya S, Geifman Y, Berman T. Internal sources and sinks of water, P, N, Ca, and Cl in Lake Kinneret, Israel. *Limnol Oceanogr* 1989;34:1202.
- Smith VH, Schindler DW. Eutrophication science: where do we go from here? *Trends Ecol Evol* 2009;24:201.
- Sondergaard M, Jeppesen E. Anthropogenic impacts on lake and stream ecosystems, and approaches to restoration. *J Appl Ecol* 2007;44:1089.
- Stephan E. Oxygen isotope analysis of animal bone phosphate: method refinement, influence of consolidants, and reconstruction of palaeotemperatures for Holocene sites. *J Archaeol Sci* 2000;27:523.
- Tamburini F, Bernasconi SM, Angert A, Weiner T, Frossard E. A method for the analysis of the  $\delta^{18}\text{O}$  of inorganic phosphate extracted from soils with HCl. *Eur J Soil Sci* 2010;61:1025.
- Tamburini F, Pfahler V, Von Sperber C, Frossard E, Bernasconi S. Oxygen isotopes for unravelling phosphorus transformations in the soil–plant system: a review. *Soil Sci Soc Am J* 2014;78:38.
- Thingstad TF, Skjoldal EF, Bohne RA. Phosphorus cycling and algal–bacterial competition in Sandsfjord, Western Norway. *Mar Ecol Prog Ser* 1993;99:239.
- Tudge AP. A method of analysis of oxygen isotopes in orthophosphate — its use in the measurement of paleotemperatures. *Geochim Cosmochim Acta* 1960;18:81.
- Vaccari DA, Strigul N. Extrapolating phosphorus production to estimate resource reserves. *Chemosphere* 2011;84:792.
- Venemann TW, Fricke HC, Blake RE, O'Neil JR, Colman A. Oxygen isotope analysis of phosphates: a comparison of techniques for analysis of  $\text{Ag}_3\text{PO}_4$ . *Chem Geol* 2002;185:321.
- Weiner T, Mazeh S, Tamburini F, Frossard E, Bernasconi SM, Chiti T, et al. A method for analyzing the delta O-18 of resin-extractable soil inorganic phosphate. *Rapid Commun Mass Spectrom* 2011;25:624.
- Whiticar MJ. Carbon and hydrogen isotope systematics of bacterial formation and oxidation of methane. *Chem Geol* 1999;161:291.
- Wu JF, Sunda W, Boyle EA, Karl DM. Phosphate depletion in the western North Atlantic Ocean. *Science* 2000;289:759.
- Young MB, McLaughlin K, Kendall C, Stringfellow W, Rollog M, Elsbury K, et al. Characterizing the oxygen isotopic composition of phosphate sources to aquatic ecosystems. *Environ Sci Tech* 2009;43:5190.
- Zohar I, Shaviv A, Klass T, Roberts K, Paytan A. Method for the analysis of oxygen isotopic composition of soil phosphate fractions. *Environ Sci Tech* 2010;44:7583.