

ORIGINAL ARTICLE

Understanding the natural progression in %FEV₁ decline in patients with cystic fibrosis: a longitudinal study

David Taylor-Robinson,¹ Margaret Whitehead,^{1,2} Finn Diderichsen,² Hanne Vebert Olesen,³ Tania Pressler,⁴ Rosalind L Smyth,⁵ Peter Diggle⁶

► Additional materials are published online only. To view these files please visit the journal online (<http://dx.doi.org/10.1136/thoraxjnl-2011-200953>).

¹Department of Public Health and Policy, University of Liverpool, Liverpool, UK

²Department of Social Medicine, University of Copenhagen, Copenhagen, Denmark

³Cystic Fibrosis Center, Aarhus University Hospital, Aarhus, Denmark

⁴Cystic Fibrosis Center, Rigshospitalet, Copenhagen, Denmark

⁵Division of Child Health, University of Liverpool, Liverpool, UK

⁶School of Health and Medicine, Lancaster University, Lancaster, UK

Correspondence to

Dr David Taylor-Robinson, MRC Population Health Scientist, Department of Public Health and Policy, Whelan Building, University of Liverpool, Liverpool L69 3GB, UK; dctr@liv.ac.uk

RLS and PJD are joint senior authors.

Received 15 August 2011
Accepted 26 February 2012
Published Online First
3 May 2012



This paper is freely available online under the BMJ Journals unlocked scheme, see <http://thorax.bmj.com/site/about/unlocked.xhtml>

ABSTRACT

Background Forced expiratory volume in 1 s as a percentage of predicted (%FEV₁) is a key outcome in cystic fibrosis (CF) and other lung diseases. As people with CF survive for longer periods, new methods are required to understand the way %FEV₁ changes over time. An up to date approach for longitudinal modelling of %FEV₁ is presented and applied to a unique CF dataset to demonstrate its utility at the clinical and population level.

Methods and findings The Danish CF register contains 70 448 %FEV₁ measures on 479 patients seen monthly between 1969 and 2010. The variability in the data is partitioned into three components (between patient, within patient and measurement error) using the empirical variogram. Then a linear mixed effects model is developed to explore factors influencing %FEV₁ in this population. Lung function measures are correlated for over 15 years. A baseline %FEV₁ value explains 63% of the variability in %FEV₁ at 1 year, 40% at 3 years, and about 30% at 5 years. The model output smooths out the short-term variability in %FEV₁ (SD 6.3%), aiding clinical interpretation of changes in %FEV₁. At the population level significant effects of birth cohort, pancreatic status and *Pseudomonas aeruginosa* infection status on %FEV₁ are shown over time.

Conclusions This approach provides a more realistic estimate of the %FEV₁ trajectory of people with chronic lung disease by acknowledging the imprecision in individual measurements and the correlation structure of repeated measurements on the same individual over time. This method has applications for clinicians in assessing prognosis and the need for treatment intensification, and for use in clinical trials.

INTRODUCTION

Understanding the long-term natural history of changes in lung function in people with lung diseases is a research priority.¹ In order to do this, objective measures of disease progression are necessary. The per cent predicted forced expiratory volume in 1 s (%FEV₁) is commonly used to monitor lung function, and to describe disease severity in cystic fibrosis (CF)² and chronic obstructive pulmonary disease (COPD).³ %FEV₁ is used to inform clinical decisions about changing or intensifying treatment, and as an outcome measure in clinical studies.^{4–6} Furthermore %FEV₁ has been shown to be related to survival in CF. Kerem *et al*'s

Key messages

What is the key question?

► Now that people with cystic fibrosis are living much longer, how can we optimally describe the changes in forced expiratory volume in 1 s as a percentage of predicted (%FEV₁) over time in a way that is useful for clinicians at the individual and the population level?

What is the bottom line?

► We describe a novel modelling approach for analysing changes in %FEV₁ over time that can be applied at the individual level to interpret the clinical significance of sudden changes in %FEV₁, and at the population level to quantify the effect of factors such as *Pseudomonas aeruginosa* acquisition.

Why read on?

► Lung function measures are correlated for over 15 years, and a baseline %FEV₁ value explains 63% of the variability in %FEV₁ at 1 year, 40% at 3 years and about 30% at 5 years.

study in 1992 demonstrated that patients with a %FEV₁ <30 had a 2-year mortality over 50%,⁷ though a more recent study shows that survival rates at low levels of lung function have improved in subsequent cohorts.⁸

Interpreting the significance of changes in %FEV₁ in CF to inform patient management and to counsel patients regarding prognosis requires an understanding of the inherent variability of %FEV₁ measures within individuals, to determine what constitutes a clinically significant deterioration in %FEV₁, rather than a change due to measurement error, or recoverable day-to-day fluctuation in lung function.^{9 10} Furthermore, this variability needs to be understood to make valid inferences about the association between covariates and %FEV₁ in observational studies.

As survival in CF improves with successive cohorts, there are many more people surviving into late adulthood. An implication of this, coupled with the availability of long-term follow-up data in CF registers, is that up to date methods should be adopted to interpret the long-term dynamics of lung function in CF. Statistical techniques for

longitudinal data analysis have been the subject of much methodological development over the past 20 years, and the random intercept and slope model has become a popular analysis framework.^{4 5 11–14} While this is often appropriate for relatively short follow-up periods, there are theoretical reasons to suggest that this approach makes assumptions that will lead to incorrect inferences if applied over longer follow-up periods. One central assumption is that the variability in %FEV₁ increases as a quadratic function over time (in proportion to time squared), which leads to estimates that diverge unrealistically over longer time periods. Methods for undertaking these analyses over longer time periods have been described,¹⁵ but have not been commonly applied.

In this study we analyse a unique population-level dataset of people with CF that includes longitudinal %FEV₁ measures taken monthly for up to 30 years. We apply these methods to develop a general model for %FEV₁ decline that goes beyond the popular random-intercept and slope approach, and explicitly describes the variability in %FEV₁ within individuals over time. We show how this could be applied clinically to help interpret the significance of changes in lung function, and at a population level to explore the association of covariates (eg, *Pseudomonas aeruginosa* acquisition) with %FEV₁ decline.

METHODS

Subjects

All patients aged over 5 years whose %FEV₁ data were entered on the Danish CF database between 1969 and 2010 were eligible. Post-transplant data from patients who had received a lung transplant were excluded. Patients attending the two Danish CF centres (Copenhagen and Aarhus) are seen routinely every month in the outpatient clinic for evaluation of clinical status, pulmonary function and microbiology of lower respiratory tract secretions. It is estimated that coverage of people with CF resident in Denmark is almost complete from 1990 when CF care was centralised. This coverage and the unparalleled frequency of measurement make this a unique dataset for epidemiological research. The study was approved by the Danish Data Inspectorate (Datatilsynet).

Lung function testing

The primary outcome for this analysis was %FEV₁. Pulmonary function tests were performed according to international recommendations,¹⁶ measuring FEV₁, expressed as a percentage of predicted values for sex and height using reference equations from Wang or Hankinson.^{17 18}

Covariates

Covariates in the analysis were age, sex, genotype coded as the number of Delta F508 alleles (0, 1 or 2), onset of chronic *Pseudomonas* infection (coded 0 or 1 as a time-varying covariate), pancreatic insufficiency determined on the basis of pancreatic enzyme usage (coded 0 or 1 as a baseline covariate), birth cohort (six 10-year cohorts starting at 1948), and CF-related diabetes (CFRD) diagnosed using the WHO criteria (coded 0 or 1 as a time-varying covariate).

Statistical analysis

A detailed explanation is given in the online appendix. Repeated %FEV₁ measures on individuals are correlated, and this must be accommodated to obtain valid inferences. We used a linear mixed effects model with longitudinally structured correlation,^{15 19} and contrasted our approach with the widely used random intercept and slope model.²⁰ We modelled random variation in %FEV₁ over time for an individual subject so that the strength of the correlation of the random variation between two values depends on the corresponding time separation. The model decomposed the overall random variation in the data into three components: between subjects, between times within subjects, and measurement error.

First, we fit a provisional model for the mean response by ordinary least squares and used the empirical variogram of the residuals (see figure E1 in the online appendix) to provide initial estimates for the three components of variation, and for the shape of the correlation function of the between-times-within-subjects component. We then re-estimated all of the model parameters by maximum likelihood estimation, and used generalised likelihood ratio statistics to compare nested models, and Wald statistics to test hypotheses about model parameters. We assessed associations between single or multiple covariates and the population mean %FEV₁ over time, and explored alternatives to a linear function for the population-averaged time trend.

RESULTS

Population characteristics

The dataset contained 70 448 lung function measures on 479 patients seen between 1969 and 2010 in Denmark (table 1). The median number of %FEV₁ measures per person was 101 (range 2–597). The median follow-up period was 10.5 years (range 0.1–31.5), with a total of 6500 person-years of follow-up. Forty-two patients were followed up for more than 30 years (see also figures E2 and E3 in the online appendix).

Table 1 Baseline characteristics of the Danish cystic fibrosis (CF) population

| | Birth cohort | | | | | | Total |
|--------------------------------------|--------------|-----------|------------|------------|------------|-----------|------------|
| | ≥1948 | ≥1958 | ≥1968 | ≥1978 | ≥1988 | ≥1998 | |
| N (%) | 7 (1.5) | 42 (8.8) | 110 (23) | 105 (21.9) | 141 (29.4) | 74 (15.4) | 479 (100) |
| Women | 1 (14.3) | 19 (45.2) | 48 (43.6) | 52 (49.5) | 74 (52.5) | 42 (56.8) | 236 (49.3) |
| No. Delta F508 = 0 | 0 (0) | 0 (0) | 1 (0.9) | 4 (3.8) | 5 (3.5) | 5 (6.8) | 15 (3.1) |
| No. Delta F508 = 1 | 2 (28.6) | 14 (33.3) | 26 (23.6) | 24 (22.9) | 42 (29.8) | 19 (25.7) | 127 (26.5) |
| No. Delta F508 = 2 | 5 (71.4) | 28 (66.7) | 83 (75.5) | 77 (73.3) | 94 (66.7) | 50 (67.6) | 337 (70.4) |
| Developed chronic <i>Pseudomonas</i> | 6 (85.7) | 31 (73.8) | 84 (76.4) | 55 (52.4) | 20 (14.2) | 5 (6.8) | 201 (42) |
| Missing infection information | 0 (0) | 5 (11.9) | 2 (1.8) | 2 (1.9) | 1 (0.7) | 0 (0) | 10 (2.1) |
| Pancreatic insufficient | 7 (100) | 42 (100) | 105 (95.5) | 99 (94.3) | 133 (94.3) | 73 (98.6) | 459 (95.8) |
| Copenhagen | 7 (100) | 38 (90.5) | 83 (75.5) | 72 (68.6) | 79 (56) | 50 (67.6) | 329 (68.7) |
| Alive | 4 (57.1) | 27 (64.3) | 79 (71.8) | 77 (73.3) | 132 (93.6) | 74 (100) | 393 (82) |
| Developed CFRD | 3 (42.9) | 21 (50) | 41 (37.3) | 31 (29.5) | 22 (15.6) | 1 (1.4) | 119 (24.8) |

CFRD, cystic fibrosis related diabetes.

Limitations of random intercept and slope model

The high degree of short-term and long-term variation in predicted %FEV₁ is illustrated in figure 1. The standard random intercept and slope model approach is illustrated over long and short follow-up periods in figure 1A,C. This approach assumes that any deviation of an individual's trajectory from the population mean is linear in time over the whole of the follow-up period apart from independent random errors. One can see that this assumption is reasonable over short time periods, as illustrated by the fit of the shorter dotted-line segments (figure 1A, C), but over longer time periods the individual data traces diverge unrealistically from their fitted linear mean trajectories (long solid line). Our proposed model produces a much closer fit to the data (figure 1B,D), and one that better reflects the relative magnitude of the three estimated components of variation in %FEV₁ over time.

Quantifying the variability in %FEV₁ over time

The empirical variogram quantifies the variability in the dataset (figure 2A). The intercept at time zero represents measurement error because there can be no true within-person variation at

a time lag of zero. Of the total variance in the Danish dataset, about half is due to systematic differences between patients (eg, genotype, sex or pancreatic status), two-fifths is within patients, representing change over time (disease progression), and one-tenth is 'measurement error'. In practice, this last component represents the combined effects of technical errors, and physiological variability occurring at time intervals less than the monthly interval of measurement, for example, day-to-day variability. This error variance equates to an average SD of 6.3% for repeated measures on the same individual at short time intervals. Figure 2B shows the proportion of the within-person variability in %FEV₁ at follow-up time (t), which can be explained by their %FEV₁ value at baseline. For example, about 50% of the within-patient variability at t=2.5 years is explained by the baseline measurement, and about 30% at t=5 years. Overall, the dependence on baseline measures gradually decays and is negligible at 15 years.

Clinical utility of our proposed model

The model can be used to guide interpretation of sudden changes in lung function. Consider seeing the person in figure 1B at

Figure 1 Comparison of conventional random intercept and slope model over short and long follow-up periods, versus our proposed Gaussian process model. (A) Data for a single individual, illustrating that a linear trend fits reasonably well over short time periods, but gives a very poor fit to this individual's complete data; linear trends are fitted by ordinary least squares. (B) The same data with the fitted trajectory of the stationary Gaussian process model. The smoothed fitted trace is a better representation of the 'true' underlying lung function, and could be used in real time to guide the interpretation of sudden changes in lung function. For instance, the sudden drop to under 30% indicated by the arrow is not mirrored in the model trace, suggesting that this may be recoverable random fluctuation. (C, D) Corresponding plots for a second individual. %FEV₁, forced expiratory volume in 1 s as a percentage of predicted.

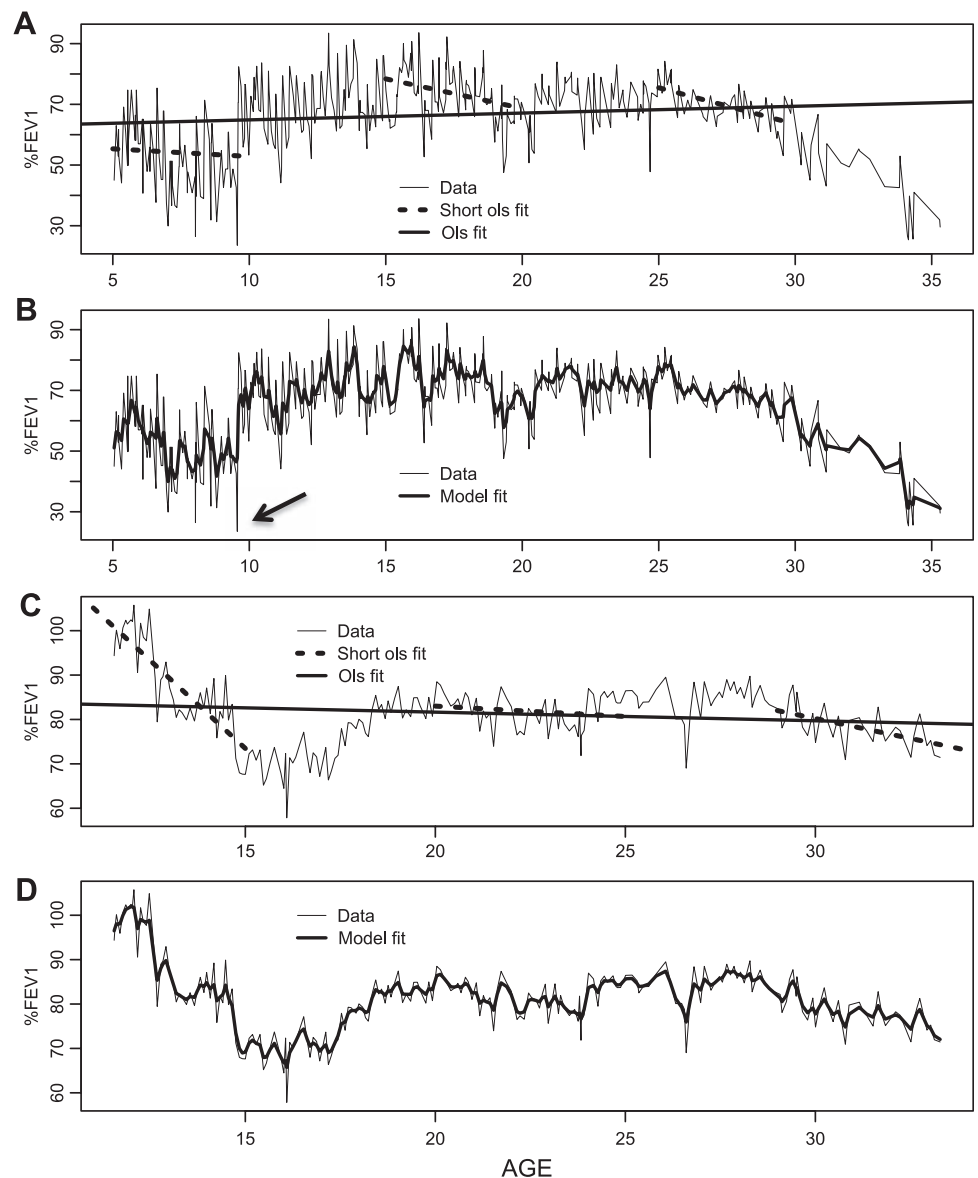
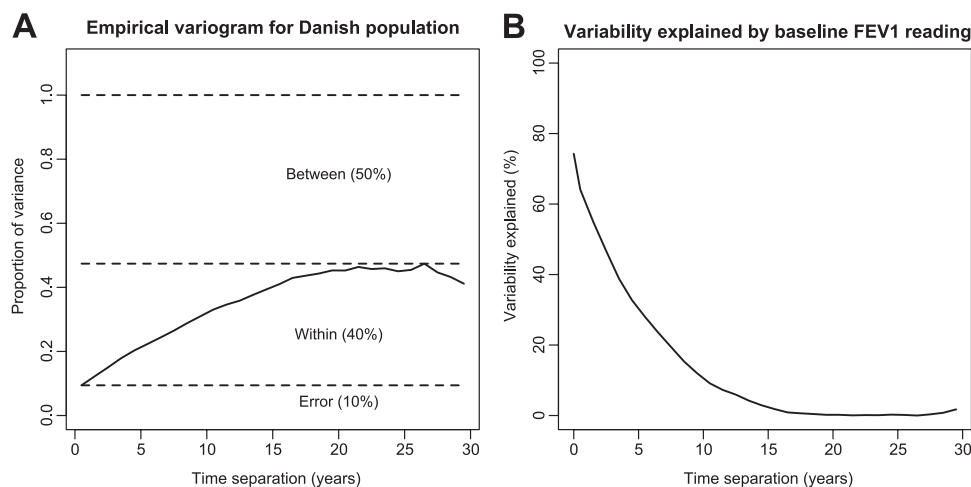


Figure 2 Quantifying the variability in forced expiratory volume in 1 s as a percentage of predicted (%FEV₁) with the variogram approach. (A) Scaled empirical variogram for the Danish data. The solid line (variogram function) represents the variance of the difference between residual errors within individuals at time lags from 0 to 30 years. The variogram function increases up to about 15 years, corresponding to a decreasing correlation between paired lung function measures with increasing time separation. The variogram partitions the variability in the data into three components: within person, between person, and error. (B) Proportion of variability in an individual's %FEV₁ at follow-up time t that is explained by their %FEV₁ at baseline. This shows that the variogram can predict 63% of the variability from the population average at 1 year, which decreases to around 60%, 40%, 30% and 10% at 2, 3, 5 and 10 years respectively.



around age 9 (as indicated by the arrow in the figure), when her lung function has dropped to below 30%. On the basis of this one-off measurement, one might be quite guarded in terms of prognosis. However, our modelled trace (thick black line in figure 1B) suggests that her underlying lung function is changing less dramatically, with a modelled %FEV₁ of around 50%. We suggest that this estimate provides a more realistic assessment of underlying lung function by smoothing out the short-term variability. This could be a useful adjunct to clinical decision-making. As well as providing information about the significance of a sudden change in lung function, figure 2B also quantifies the predictive value of a contemporary %FEV₁ measure. In terms of counselling patients, this means that a higher %FEV₁ today is associated with a higher %FEV₁ at subsequent time points, but the predictive value deteriorates over time as illustrated in the figure.

Effect of covariates on lung function in the Danish population

We explored the effect of covariates that have been associated with %FEV₁ in previous studies to demonstrate how this model can be used to answer questions at the population level (see table E1 online appendix for univariate associations).⁴ There was

no evidence to suggest that covariate effects were nonlinear (see figure E4 in online appendix). The final model included age, *Pseudomonas* status, pancreatic status, cohort and CFRD (table 2). Note that the estimated covariate effects in table 2 are population-averaged effects, that is, they describe average values of %FEV₁ for sub-populations of individuals sharing the same explanatory characteristics, rather than for any one individual. The most prominent effects are associated with birth cohort, pancreatic function and the onset of *Pseudomonas* infection (figure 3). There is clear separation between the three most recent birth cohorts, with a successive increase in the intercept term at age 5 (83% in the 1978–88 cohort vs 96% in the post-1998 cohort) (figure 3A and figures E9–E10 in online appendix). There is a large change in the point estimate for the rate of change of lung function in the post-1998 (0.24%) compared with the 1988–98 cohort (–1% per year), such that the post-1998 cohort appears to be improving over the period of measurement. The three cohorts spanning the years 1948–1978 have a similar overall rate of decline around –0.3% per year, with an intercept at age 5 of 66%. Pancreatic insufficiency is associated with a significantly steeper rate of decline of lung function (–0.92% per year, 95% CI –1.7 to –0.3), as is acquisition of *Pseudomonas*

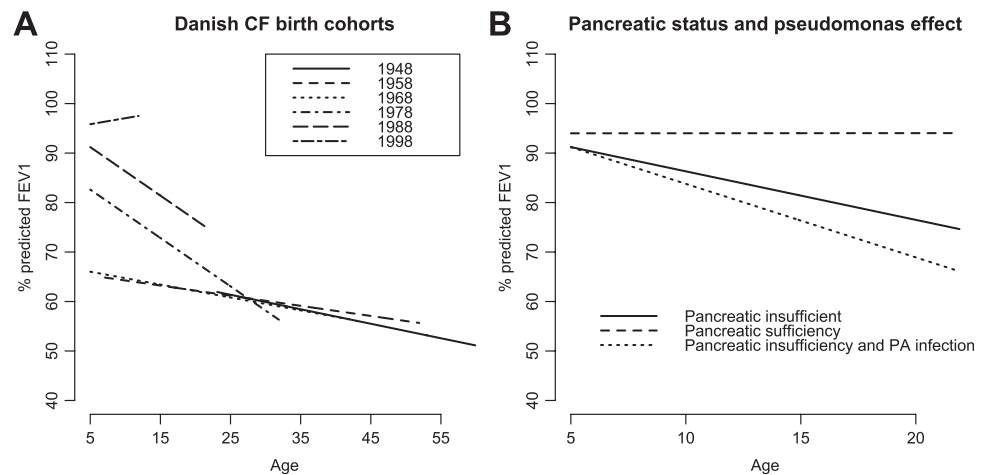
Table 2 Estimates from final multivariate model

| | Point estimate | Lower 95% CI | Upper 95% CI | p Value |
|---|----------------|--------------|--------------|---------|
| Intercept at age 5 years | 66.02 | 61.13 | 70.92 | <0.001 |
| CFRD | –2.47 | –3.58 | –1.37 | <0.001 |
| Age | –0.26 | –0.49 | –0.03 | 0.025 |
| Cohort≥1948 (reference 1968) | 1.20 | –25.50 | 27.90 | 0.930 |
| Cohort≥1958 | –0.75 | –10.01 | 8.51 | 0.874 |
| Cohort≥1978 | 16.60 | 10.15 | 23.05 | <0.001 |
| Cohort≥1988 | 25.19 | 19.11 | 31.27 | <0.001 |
| Cohort≥1998 | 29.81 | 22.85 | 36.78 | <0.001 |
| Pancreatic sufficiency | 2.78 | –10.43 | 15.99 | 0.679 |
| <i>Pseudomonas aeruginosa</i> infection | –0.51 | –0.72 | –0.29 | <0.001 |
| Age×cohort≥1948 | –0.03 | –0.67 | 0.61 | 0.920 |
| Age×cohort≥1958 | 0.06 | –0.23 | 0.34 | 0.699 |
| Age×cohort≥1978 | –0.72 | –1.00 | –0.44 | <0.001 |
| Age×cohort≥1988 | –0.72 | –1.09 | –0.35 | <0.001 |
| Age×cohort≥1998 | 0.50 | –0.41 | 1.42 | 0.280 |
| Age×pancreatic sufficiency | 0.98 | 0.29 | 1.67 | 0.005 |

CFRD, cystic fibrosis related diabetes.

Cystic fibrosis

Figure 3 Effect of covariates on forced expiratory volume in 1 s as a percentage of predicted (%FEV₁). (A) Birth cohort effect in the final model. There is clear separation between the three most recent birth cohorts, with a successive increase in the intercept term at age 5 years. (B) Effect of pancreatic insufficiency and *Pseudomonas* infection on the predicted population trajectory for a person born in the 1988–1998 cohort. CF, cystic fibrosis; PA, *Pseudomonas aeruginosa*.



infection (-0.5% per year, 95% CI -0.72 to -0.3) (figure 3B and figure E8 in online appendix). CFRD is associated with a drop in intercept of -2.5% (95% CI -3.6% to -1.37%), but has no effect on the rate of decline of lung function.

DISCUSSION

We describe a novel longitudinal modelling technique specifically aimed at analysing long sequences of repeated measurements, and apply this to %FEV₁ from a CF population. We show how this approach could be used to inform patient management, by aiding the interpretation of sudden changes in lung function, and by quantifying the predictive value of a baseline %FEV₁ measure up to 15 years later. At the population level, we show how our model can be used to quantify the effect of covariates on populations or sub-populations. Translation of these methods into clinical practice is important because people with CF are living longer, and we have shown how commonly applied approaches are unhelpful over long follow-up periods.

This study quantifies the short-term variability in %FEV₁ in this population (SD 6.3%), and demonstrates that %FEV₁ measures within individuals are correlated over time lags of 15 years or more. We have also explored the effect of previously studied risk factors for lung function decline in the Danish CF population, and have demonstrated significant effects of birth cohort, pancreatic status and *Pseudomonas* infection status.

The findings from this study have a number of clinical applications. Quantifying the variability in lung function measures is essential to make correct clinical interpretation.¹⁰ Exploiting the unusually high frequency of data collection in Denmark, this study implies that on average a change in %FEV₁ of $>13\%$ (ie, twice the error SD, to give a 95% confidence range) is likely to represent true within-patient variation over time (disease progression), whereas anything less than this could be due to short-term fluctuation, which may recover. Stanbrook *et al*²¹ found a pooled within-subject %FEV₁ SD of 4.5% when measured over a 9-day period in 21 stable adults with CF. This population is different to the population in our study, who were measured regardless of clinical status, and one would therefore expect greater variability. Other studies have shown that people with CF, asthma and COPD have more short-term variability in lung function tests^{22–24} and that more impaired lung function is associated with greater variability.²⁵

Our model can be used to generate an underlying representation of an individual's 'true' lung function trajectory (figure 1B,D) that smoothes out the noise inherent in %FEV₁ measures. These smoothed traces could be used to inform clinical decision-

making—the model fit curves in figure 1 provide more realistic estimates of underlying lung function, and more valid criteria for clinical decisions. We propose that this model could be used to develop a real-time smoothing tool embedded in electronic patient records to aid clinical interpretation of spirometry data. We suggest that access to this information would provide some re-assurance to patients experiencing lower than expected lung function values, since lung function can recover quite dramatically, and these data suggest that a linear or stepwise decline in lung function over time is not the norm.

We have generated, for the first time to our knowledge, the variogram function for %FEV₁ in people with CF over long follow-up periods. This precisely quantifies how %FEV₁ measures are correlated over time. Furthermore we have done this for the whole CF population of Denmark. This quantifies the degree to which a baseline %FEV₁ measure can be used to predict subsequent %FEV₁ measures over long follow-up periods, and is likely to be of interest to clinicians and patients. We demonstrate a long-term correlation between levels of %FEV₁ within an individual. This suggests that there is long-term predictive value in a high %FEV₁ measure—people with CF with a high %FEV₁ at baseline are more likely to have a high %FEV₁ up to 15 years later than individuals with a lower baseline %FEV₁ (figure 2B). However, the predictive value of a %FEV₁ measure drops away rapidly over this period. We can say that on average a %FEV₁ reading today explains about 63% of the variability in %FEV₁ at 1 year, 40% at 3 years, and about 30% at 5 years.

This corroborates Rosenthal's study,²⁶ which found that baseline %FEV₁ explains 66% of the variability in %FEV₁ at 1 year, and Mastella *et al*'s study of European registry data in which differences in lung function at enrolment at age 5, categorised as mild, moderate or severe, tracked through the study to age 40.²⁷ Konstan *et al* also describe how a lower %FEV₁ for a given age can be used to characterise the aggressiveness of lung disease.²⁸ Other studies have shown a high %FEV₁ to be an independent risk factor for a greater rate of decline of %FEV₁ over the next few years.^{4 29} This is not at odds with our findings here; a high %FEV₁ can be a risk factor for greater decline in the short term, while still being associated with a relatively higher %FEV₁ over the longer term.²⁸

At the population level we show how our approach can be applied to quantify the effect of covariates on changes in lung function. Furthermore, the partitioning of the variability in %FEV₁ and the precise description of the correlation structure captured in the model provide important information for sample

size calculations in longitudinal clinical studies with %FEV₁ as an outcome. Increasingly longitudinal outcomes are being used in randomised control trials, and to undertake an a priori sample size calculation it is essential to have information on the correlation structure. Furthermore, our modelled %FEV₁ trace could be used as an outcome in its own right.

As with other studies of patients with CF,³⁰ there is a striking cohort effect evident in this population. The treatment of CF lung disease has been transformed over the period captured in this analysis, from 1969 to the present day. Particularly impressive is the improvement in lung function in the post-1998 cohort by comparison with preceding birth cohorts. Although patients in this group are early in their disease progression, the overall picture suggests that new therapeutic strategies are continuing to provide improvements in respiratory function in CF.

Our approach to modelling changes in %FEV₁ can be applied over long follow-up periods. This is in contrast to the widely used random intercept and slope approach that has been applied in studies of CF and COPD over short-term^{4 27 31 32} and longer-term follow-up periods.^{10 11 14 33} The development and testing of the new approach is facilitated by the nature of the Danish CF register—to our knowledge there are no other datasets that contain such frequent (monthly) measures of lung function on individuals measured over very long periods (up to 31.5 years). However, the fact that the data are from Denmark does not influence the validity of the methods we have described, since these are essentially context free. Furthermore, this method does not exploit any features of our data that are unique to CF, and is equally applicable to other clinical areas that generate long sequences of repeated measurements. As a next step we recommend that this method be applied to longitudinal data collected in other CF registries, such as the UK, to clarify how robust this approach is in terms of predicting changes in %FEV₁ over time, and to better understand how this might inform clinical decision making. Future research could explore the utility of our proposed model in other diseases such as COPD.

A limitation of this study is the likely influence of survivor bias on lung function estimates in the earlier birth cohorts. In the 1948–1978 period, the intercept at age 5 appears significantly lower than in the other cohorts, but there is also a shallower rate of decline of lung function. This is likely to be due to the incomplete capture of patients in earlier cohorts, with censoring due to death leaving only the more stable survivors. This is a common problem in datasets of this type.³⁴ Fitting the model by maximum likelihood automatically corrects for selection bias that depends on a patient's observed lung function measurements prior to death, although not for any additional dependence on unmeasured features of their lung function trajectory.^{15 19}

Pancreatic sufficiency had an important effect on the overall rate of decline of lung function (+0.9% per year). In Konstan's study⁴ pancreatic sufficiency was the most important protective factor in the age group 6–8 years (+1.33% per year). The small number of pancreatic-sufficient individuals in the Danish dataset (n=20, 5%) have a notably different lung function phenotype, maintaining near-normal lung function over the period of follow-up (see plot in online appendix). The onset of *Pseudomonas* infection was associated with a significant increase in the rate of decline of lung function, by around –0.5% per year, similar to that reported in the study by Konstan, in which *Pseudomonas* colonisation was associated with an increased rate of decline of FEV₁ of –0.31% per year in the 6–8-year-old age group, and –0.22 in the 9–12-year-old age group.⁴

In conclusion, our modelling approach provides a more realistic estimate of the %FEV₁ trajectory in CF, which could be applied in real time to help clinicians interpret the significance of changes in %FEV₁. Furthermore, our approach quantifies the predictive value of a baseline %FEV₁ measure, over three decades. This method is equally applicable to the longitudinal assessment of %FEV₁ in other lung diseases, and can enable more robust comparisons of populations, including groups studied in clinical trials. As people are now living for many decades with these diseases, the development of tools to better understand the natural history of this important outcome will be essential for improved clinical care, as well as being a key research priority.¹

Acknowledgements We thank Professor Peter Oluf Schiøtz for his support in accessing the data for this analysis.

Contributors DTR, MMW, FD, TP, RLS and PD conceived and designed the study. TP and HVO collected the data. DTR undertook the analysis and PD supervised analysis. DTR, MMW, RLS and PD interpreted the results and drafted the paper. All authors contributed to and approved the final draft for publication.

Funding This work was supported by an MRC Population Health Scientist Fellowship to DTR (G0802448). The funders had no role in study design, data collection and analysis, decision to publish, or preparation of the manuscript.

Competing interests None.

Ethics approval The study was approved by the Danish Data inspectorate (Datatilsynet). Danish CF registry data were used, analysed anonymously.

Provenance and peer review Not commissioned; externally peer reviewed.

REFERENCES

- Holgate ST. Priorities for respiratory research in the UK. *Thorax* 2007;**62**:5–7.
- Davies JC, Alton EW. Monitoring respiratory disease severity in cystic fibrosis. *Respir Care* 2009;**54**:606–17.
- Rabe KF, Hurd S, Anzueto A, et al. Global Initiative for Chronic Obstructive Lung Disease. Global strategy for the diagnosis, management, and prevention of chronic obstructive pulmonary disease: GOLD executive summary. *Am J Respir Crit Care Med* 2007;**176**:532–55.
- Konstan MW, Morgan WJ, Butler SM, et al. Risk factors for rate of decline in forced expiratory volume in one second in children and adolescents with cystic fibrosis. *J Pediatr* 2007;**151**:134–9, 139.e1.
- Konstan MW, Schluchter MD, Xue W, et al. Clinical use of ibuprofen is associated with slower FEV1 decline in children with cystic fibrosis. *Am J Respir Crit Care Med* 2007;**176**:1084–9.
- Ramsey BW, Dorkin HL, Eisenberg JD, et al. Efficacy of aerosolized tobramycin in patients with cystic fibrosis. *N Engl J Med* 1993;**328**:1740–6.
- Kerem E, Reisman J, Corey M, et al. Prediction of mortality in patients with cystic fibrosis. *N Engl J Med* 1992;**326**:1187–91.
- George PM, Banya W, Pareek N, et al. Improved survival at low lung function in cystic fibrosis: cohort study from 1990 to 2007. *BMJ* 2011;**342**:d1008.
- Corey M. Power considerations for studies of lung function in cystic fibrosis. *Proc Am Thorac Soc* 2007;**4**:334–7.
- Hnizdo E, Yu L, Freyder L, et al. The precision of longitudinal lung function measurements: monitoring and interpretation. *Occup Environ Med* 2005;**62**:695–701.
- Stern DA, Morgan WJ, Wright AL, et al. Poor airway function in early infancy and lung function by age 22 years: a non-selective longitudinal cohort study. *Lancet* 2007;**370**:758–64.
- van Diemen C, Postma D, Siedlinski M, et al. Genetic variation in TIMP1 but not MMPs predict excess FEV1 decline in two general population-based cohorts. *Respir Res* 2011;**12**:57.
- Harber P, Tashkin DP, Simmons M, et al. Effect of occupational exposures on decline of lung function in early chronic obstructive pulmonary disease. *Am J Respir Crit Care Med* 2007;**176**:994–1000.
- Corey M, Edwards L, Levison H, et al. Longitudinal analysis of pulmonary function decline in patients with cystic fibrosis. *J Pediatr* 1997;**131**:809–14.
- Diggle P, Heagerty P, Liang KY, et al. *Analysis of Longitudinal Data*. 2nd edn. Oxford: Oxford University Press, 2002.
- Miller MR, Hankinson J, Brusasco V, et al. Standardisation of spirometry. *Eur Respir J* 2005;**26**:319–38.
- Wang X, Dockery DW, Wypij D, et al. Pulmonary function between 6 and 18 years of age. *Pediatr Pulmonol* 1993;**15**:75–88.
- Hankinson JL, Odencrantz JR, Fedan KB. Spirometric reference values from a sample of the general U.S. population. *Am J Respir Crit Care Med* 1999;**159**:179–87.
- Fitzmaurice GM, Laird NM, Ware JH. *Applied Longitudinal Analysis*. Hoboken, New Jersey: Wiley, 2004.

Cystic fibrosis

20. **Laird NM**, Ware JH. Random-effects models for longitudinal data. *Biometrics* 1982;**38**:963–74.
21. **Stanbrook MB**, Corey M, Tullis DE. The repeatability of forced expiratory volume measurements in adults with cystic fibrosis. *Chest* 2004;**125**:150–5.
22. **Hruby J**, Butler J. Variability of routine pulmonary function tests. *Thorax* 1975;**30**:548–53.
23. **Pennock BE**, Rogers RM, McCaffree DR. Changes in measured spirometric indices. What is significant? *Chest* 1981;**80**:97–9.
24. **Cooper PJ**, Robertson CF, Hudson IL, *et al*. Variability of pulmonary function tests in cystic fibrosis. *Pediatr Pulmonol* 1990;**8**:16–22.
25. **Enright PL**, Beck KC, Sherrill DL. Repeatability of spirometry in 18,000 adult patients. *Am J Respir Crit Care Med* 2004;**169**:235–8.
26. **Rosenthal M**. Annual assessment spirometry, plethysmography, and gas transfer in cystic fibrosis: do they predict death or transplantation. *Pediatr Pulmonol* 2008;**43**:945–52.
27. **Mastella G**, Rainisio M, Harms HK, *et al*. Allergic bronchopulmonary aspergillosis in cystic fibrosis. A European epidemiological study. Epidemiologic Registry of Cystic Fibrosis. *Eur Respir J* 2000;**16**:464–71.
28. **Konstan MW**, Wagener JS, VanDevanter DR. Characterizing aggressiveness and predicting future progression of CF lung disease. *J Cyst Fibros* 2009;**8**(Suppl 1): S15–19.
29. **Vandevanter DR**, Wagener JS, Pasta DJ, *et al*. Pulmonary outcome prediction (POP) tools for cystic fibrosis patients. *Pediatr Pulmonol* 2010;**45**:1156–66.
30. **Elborn JS**, Shale DJ, Britton JR. Cystic fibrosis: current survival and population estimates to the year 2000. *Thorax* 1991;**46**:881–5.
31. **Vestbo J**, Sorensen T, Lange P, *et al*. Long-term effect of inhaled budesonide in mild and moderate chronic obstructive pulmonary disease: a randomised controlled trial. *Lancet* 1999;**353**:1819–23.
32. **MacLean JE**, Atenafu E, Kirby-Allen M, *et al*. Longitudinal decline in lung volume in a population of children with sickle cell disease. *Am J Respir Crit Care Med* 2008;**178**:1055–9.
33. **Kohansal R**, Martinez-Camblor P, Agusti A, *et al*. The natural history of chronic airflow obstruction revisited: an analysis of the Framingham offspring cohort. *Am J Respir Crit Care Med* 2009;**180**:3–10.
34. **Frederiksen B**, Lannig S, Koch C, *et al*. Improved survival in the Danish center-treated cystic fibrosis patients: results of aggressive treatment. *Pediatr Pulmonol* 1996;**21**:153–8.



Understanding the natural progression in %FEV₁ decline in patients with cystic fibrosis: a longitudinal study

David Taylor-Robinson, Margaret Whitehead, Finn Diderichsen, et al.

Thorax 2012 67: 860-866 originally published online May 3, 2012

doi: 10.1136/thoraxjnl-2011-200953

Updated information and services can be found at:

<http://thorax.bmj.com/content/67/10/860.full.html>

These include:

Data Supplement

"Supplementary Data"

<http://thorax.bmj.com/content/suppl/2012/05/03/thoraxjnl-2011-200953.DC1.html>

References

This article cites 32 articles, 15 of which can be accessed free at:

<http://thorax.bmj.com/content/67/10/860.full.html#ref-list-1>

Article cited in:

<http://thorax.bmj.com/content/67/10/860.full.html#related-urls>

Open Access

This is an open-access article distributed under the terms of the Creative Commons Attribution Non-commercial License, which permits use, distribution, and reproduction in any medium, provided the original work is properly cited, the use is non commercial and is otherwise in compliance with the license. See:

<http://creativecommons.org/licenses/by-nc/2.0/> and <http://creativecommons.org/licenses/by-nc/2.0/legalcode>.

Email alerting service

Receive free email alerts when new articles cite this article. Sign up in the box at the top right corner of the online article.

Topic Collections

Articles on similar topics can be found in the following collections

[Open access](#) (52 articles)
[Cystic fibrosis](#) (370 articles)
[Epidemiologic studies](#) (1220 articles)

To request permissions go to:

<http://group.bmj.com/group/rights-licensing/permissions>

To order reprints go to:

<http://journals.bmj.com/cgi/reprintform>

To subscribe to BMJ go to:

<http://group.bmj.com/subscribe/>

Notes

To request permissions go to:

<http://group.bmj.com/group/rights-licensing/permissions>

To order reprints go to:

<http://journals.bmj.com/cgi/reprintform>

To subscribe to BMJ go to:

<http://group.bmj.com/subscribe/>