

Tillage exacerbates the vulnerability of cereal crops to drought

John N. Quinton¹⁾, Lena K. Öttl²⁾, Peter Fiener^{2)*}

¹⁾ Lancaster Environment Centre, Lancaster University, LA1 4YQ, Lancaster, UK

²⁾ Institute of Geography, University Augsburg, Augsburg, Germany

* corresponding author

Water and Soil Resource Research, Institute of Geography, Faculty of Applied Computer Sciences, University Augsburg, Alter Postweg 118, 86161 Augsburg, Germany.

fiener@geo.uni-augsburg.de

Abstract

Soils used for crop production cover 15.5 million km² and almost all have been tilled at some point in their history. However, how the changes in soil depth and soil properties associated with tillage affect crop yields is unclear. Here, we show that tillage on slopes thins soils and reduces wheat and maize yields. At the landscape scale, tillage erosion gradually reduces crop yields as the duration and intensity of tillage increase. Over the next fifty to 100 years, the overall yields are likely to further decline as modern mechanized agriculture accelerates the process of tillage erosion compared to centuries of non-mechanized tillage. Arresting this downward trend will require more widespread adoption of no-tillage practices and avoidance of downslope cultivation. The downward pressure on landscape-scale yields due to tillage erosion is expected to be amplified by climate change-induced increases in dry spells during crop growth.

Introduction

Tillage moves significant amounts of soil down slope, estimated to be approximately a fifth of that associated with water erosion and over twice the amount globally moved by wind erosion¹. Soils used for crop production cover 15.5 million km² and almost all have been tilled at some point in their history, yet the role of tillage in reducing soil depth remains an under-recognised threat to plant production. While it has been demonstrated that tillage erosion moves significant amounts of soil down-slope, often exceeding that attributed to water and wind erosion, we know little about how the changes in soil depth and soil properties associated with tillage affect crop yields and represents a threat to the delivery of the UN development goals. On sloping land tillage thins soils on slope convexities and causes soil accumulation in concavities (Figure 1, left). Tillage translocation depends upon the speed and depths of tillage and the implement used, with inversion tillage tending to move material than non-inversion cultivations². Only no-tillage systems do not move substantial amounts of soil. Soil translocation by tillage is also affected by soil properties, soil status variables (e.g. moisture, consolidation after preceding tillage) and slope gradient, with the greater

movement occurring on steeper slopes, and where there are changes in slope. In areas with a long history of cultivation, soil redistribution by tillage almost certainly started when the land was first cultivated for agriculture (Figure 1, left), however rates of movement from hand tools and ploughs pulled by animals³ are much lower than those associated with mechanised agriculture and these rates have accelerated in recent decades as agriculture has intensified and machinery has increased in size and power⁴.

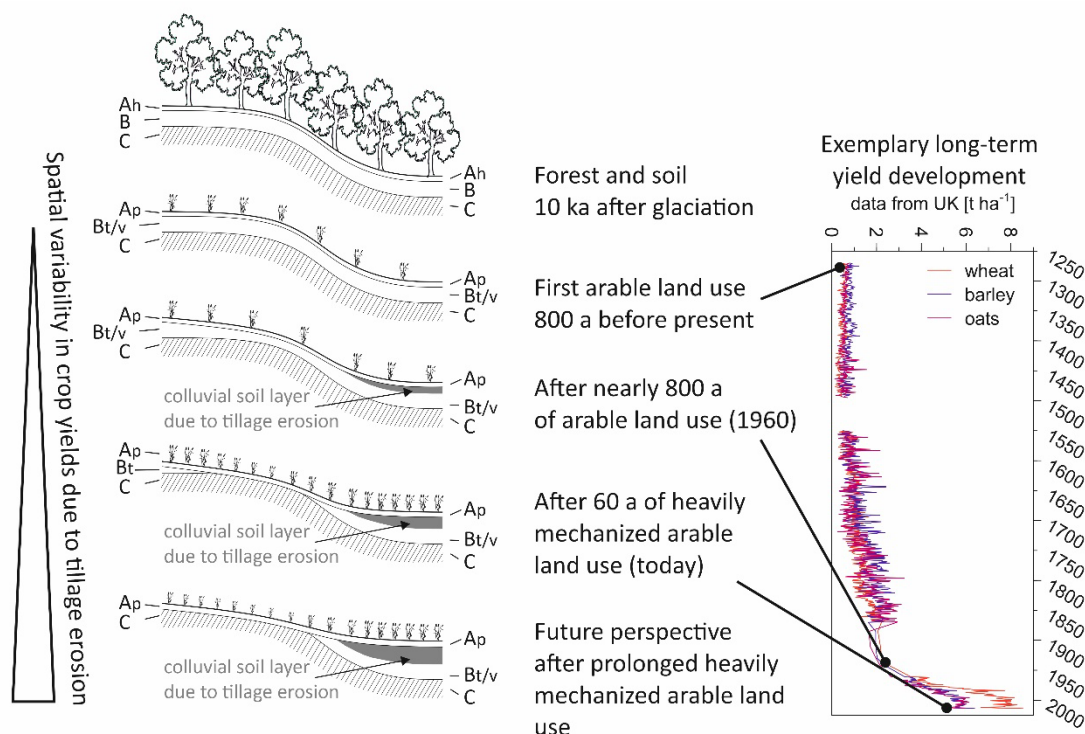


Figure 1. Schematic illustration of the increase in spatial heterogeneity in soil properties (indicated as change in A, B and C soil horizons) due to (tillage) erosion following conversion from forests to arable affecting heterogeneity in crop yields. The yield effect is masked at field scale due to the large increase in yields within the later part of the last century. Data to illustrate changes in yields in Europe taken from the United Kingdom⁵⁰.

As soils become thinner, and if the tillage depth is not reduced, material from the subsoil is mixed with the topsoil and over time the topsoil properties approach those of the subsoil (Figure 2). This leads to a reduction in the quality of the A horizon, which contains most of the soil nutrients and biological activity and stores the water needed for plant growth. In some case soil horizons with physical or chemical properties that are inhospitable for plants approach the surface. Therefore, soils on convexities where soil is lost are shallower, and hence mostly hold less water, are depleted in nutrients and carbon, and have poorer chemical and physical properties. The contrary is true for the concavities where the translocated soil

from upslope is accumulated. Here, soil accumulates and is mixed with the existing A horizon leading to deeper soils that are enriched in nutrients and carbon and able to store greater amounts of plant-available water. However, prolonged landscape erosion might also result in a degradation of topsoils at depositional sites, as over time subsoil exposed to the surface at eroded sites will be redistributed to depositional sites⁵ (Figure 2).

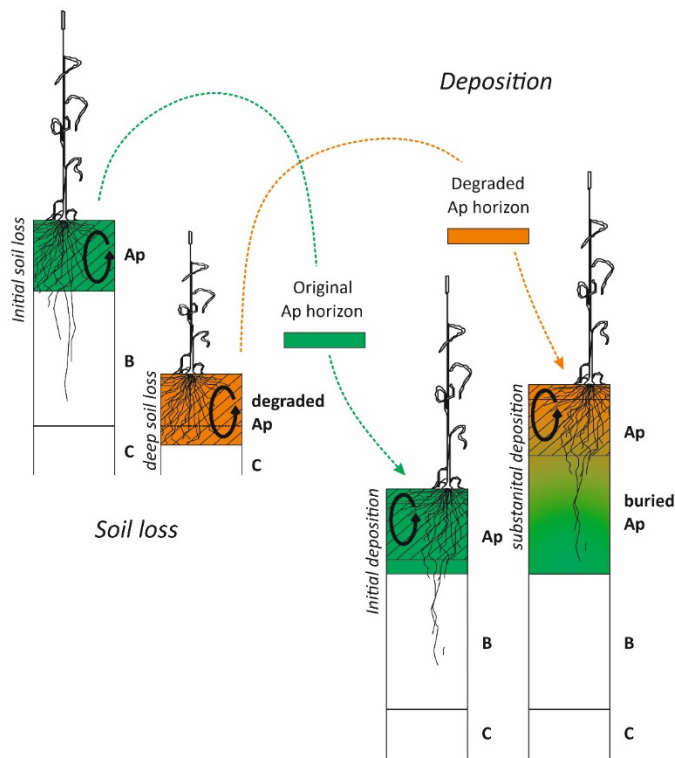


Figure 2. Schematic illustration of the effects of soil loss and deposition on topsoil properties following initial to long-term soil loss and deposition. Ap is the plough horizon, while B is a mineral horizon and C is the parent material of the systematic soil profiles.

Although the question of how erosion affects agricultural production has long been a research topic, there have been only isolated studies on the effects of tillage erosion⁶. This is surprising because tillage erosion affects all hilly agricultural landscapes, not just those prone to water and wind erosion. Thus, estimates of how tillage erosion affects agricultural yields at the landscape scale, especially under increasing mechanisation, are lacking.

To illustrate the general problem of erosion and yield loss, we synthesise published information on the impacts of soil thinning on crop productivity. We then utilise soil redistribution and crop growth models to examine the effects of tillage over a landscape,

where soils on the convexities lose and those in the concavities gain soil, to see whether the potential gains in crop production due to increased soil depth outweigh the losses due to thinning soils. Next, we examine the potential future impacts of likely changes in tillage equipment on soils and crop production to 2100. Finally, we discuss the wider implications of these findings for the sustainability of crop production in arable landscapes.

Results

Tillage erosion and crop productivity

Tillage results in reduced plant productivity in those parts of the landscape where the soil thins. Thinning soils have reduced water storage, and where no fertilizers are applied, lower nutrient availability which leads to lower crop productivity. The negative relationship between soil loss and crop productivity determined at the plot scale by removing topsoil, so called desurfacing experiments, is well documented and consolidated in several review papers e.g.⁷. The effect of soil loss upon biomass production or yield is significantly more pronounced in the case of zero or low fertilizer inputs (Figure 3) and therefore a significant problem in low input, subsistence farming systems⁸. However, almost all these studies relate the change in crop yield to soil loss, but not the change in soil depth, which has the potential to be a better predictor. The reduction in soil depth, and the associated ability of the soil to store and supply water to plants, is more important in high input agricultural systems than the loss of nutrients, which can, at least in the short term, be replaced by fertilization⁹. The loss of water storage capacity will be most important during prolonged dry spells or periods of drought during the cropping season. In the few experiments¹⁰⁻¹² which have mechanically removed soil and which have related soil depth to crop yield, there is an indication that the loss in yield is less pronounced than in those which have only measured soil depth reduction (Figure 3). However, the relationship is uncertain: the experiments do not encompass situations where, because of soil thinning, only a little soil is left to be cultivated; nor do they include areas with pronounced drought during the growing period; and the sample size is small, with crops limited to barley and maize. The relationship between soil depth and crop production is further complicated due to the properties of soil parent material, which may extend the rooting depth beyond the depth of the soil. For example weakly consolidated and porous parent materials, such as loess, are penetrated by plant roots to access water. Although deposition of eroded material may cause soils to thicken, and thus, in periods of drought, have higher crop yields than comparable shallower soils there are no standardised plot studies to illustrate this.

At the landscape scale, response of crop productivity to landscape positions is complex. In Denmark crop yields were lower on slope convexities and higher on concavities and were related to changes in soil phosphorous content⁶ while in England the crop response was more

complex with locations associated with tillage erosion displaying nutrient-depletion and low rates of crop production, but there were also areas of low production associated with aggrading areas, and they do not consider changes in soil depth and nor do they consider the trade-offs between yields where soils are thinning and where they are thickening.

Tillage induced soil redistribution and landscape-scale response of crop productivity

To understand the landscape-scale impacts of soil truncation and colluviation due to tillage on biomass production we coupled the well-established crop model AQUACROP¹³ and the tillage erosion component of the model SPEROS-C¹⁴. We then applied the model for both wheat and maize in the approximately 200 km² test region in the Uckermark, 100 km north of Berlin, Germany (Supplementary Figure S3). The test region was chosen as: (i) it has been used for crop production over the last millennia; and since the 1960s agriculture was intensively mechanised and field sizes were substantially enlarged during the time of the German Democratic Republic. (ii) It represents a typical ground moraine landscape, found in large areas of Europe and Northern-America, dominated by a rolling topography and soils developed on glacial tills, a highly compacted and difficult to root parent material; (iii) soil truncation due to tillage erosion is known to be widespread in the area^{15,16}; and (iv) results from earlier studies in the region dealing with different erosion processes¹⁵ and erosion / biomass interactions can be utilized¹⁶.

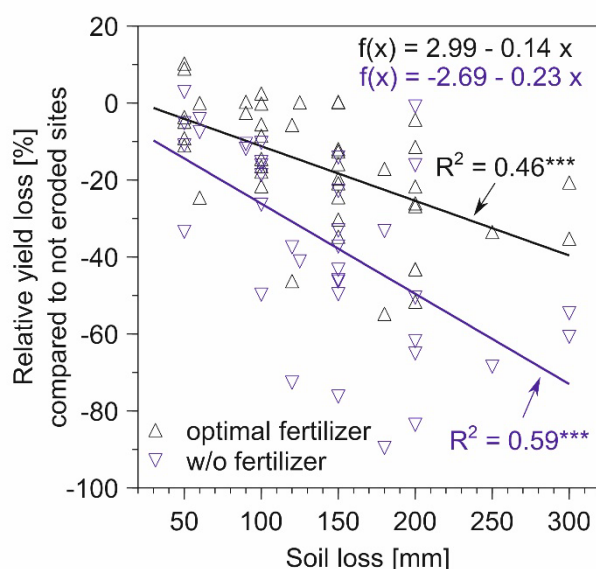


Figure 3. Effects of removing topsoil on wheat yields under optimal and no fertilisation^{9,17,34-41}.

A series of biomass/soil depth responses for the period 1964-2017 were produced using the AQUACROP model driven by soil properties generated by mixing an average non eroded profile from the region (soil depths to C horizon 1.4 m) following the loss or gain of soil at the surface and measured climate data.

There was a strong interaction between climate and the yield/soil depth response. In wet years, when plant water is plentiful, there is a smaller difference in biomass production between shallow and deeper soils (Figure 4 left) than in a dry year, when crops rely on water stored in the soil profile and the difference in biomass production between thinning and thickening soils is amplified (Figure 4 left). Modelled reduction in yield started earlier with soil truncation in the case of winter wheat as compared to maize, but maize biomass immediately fell if soil thickness dropped below about 0.75 m. At depositional sites modelled winter wheat biomass profited from deeper soils, while this was not the case for maize. This general behaviour was also found when comparing remote sensing derived biomass proxy variables (Enhanced Vegetation Index, EVI) with patterns of modelled tillage erosions classes (Figure 4 right).

The yield information resulting from the AQUACROP modelling of different soil profile was extended across the landscape using SPEROS-C to model the spatially distributed tillage induced soil thinning and thickening for about the last 1000 years. To do so low values of tillage intensity for the first 940 years and much higher values for the last approximately 60 years were assumed, whereas the latter was calibrated against soil redistribution patterns derived from radionuclide data of a small sub-catchment¹⁵ (Supplementary Figure S3). Soil redistribution due to tillage lowered overall simulated biomass production in a 'normal to dry' year (see Figure 4) from 215,000 t to 202,000 t for wheat, and maize from 276,000 t to 269,000 t. In a wetter year yields reduction was lower with 317,000 t of wheat or 415,000 t of maize reduced to 308,000 t or 411,000 t respectively (Figure 5).

Future production

Agricultural production has been possible in the Uckermark for at least 1000 years. Our modelling results suggest that by continuing to till the soils of the Uckermark, mean yields on the landscape-scale will continue to decline and that this decline increases with tillage intensity and reduced water availability (Figure 5). In 50 years, we expect reductions in normal to dry years winter wheat biomass of between 6.6 and 7.1%, depending on the intensity of tillage (scenarios see Figure 5). These differences increase to between 8 and 10% for the 100 years of tillage scenario. Maize biomass was less affected in normal to dry years, with reductions of between 3.1 and 4.0% for the 50-year time horizon and 3.9 to 5.9% for 100 years in the future. In wet years reductions were smaller at between 3.3. and 4.4% for wheat

and 1.1 to 1.9 % for maize for the 50-year scenario. While for the 100-year scenarios, reductions are between 4.3 and 5.9% for wheat and 1.9 to 3.2% for maize.

Discussion

The reviewed desurfacing experiments illustrated, as expected, the negative effect of soil loss on crop yields (Figure 3). Those experiments adding topsoil to plots to test potential positive yield effects¹⁷ are much rarer. Therefore, even if these plot experiments give a first indication, it is difficult to use them to understand the effect of soil redistribution on crop yields at the landscape-scale. To overcome this studies have determined soil loss and deposition using radionuclide erosion tracers, such as ¹³⁷Cs, associated with atomic weapons testing and compared them with yield data^{6,18}. However, such tracer-based approaches miss the long-term effect associated with centuries to millennia of soil loss and gain as they only focus on the last approximately 70 years to explain spatial distributed yield effects. They are also, mostly, limited to small test sites as effort required for soil sampling and analysis is significant. Our modelling approach allows a much longer perspective, focussing on soil loss or gain since start of cultivation in the test region roughly 1000 years ago. Obviously, modelling land management over such a long-time span is challenging and model parameterisation requires a number of assumptions, such as the historical tillage intensity (for uncertainty discussion see Supplementary material). However, as we were interested in relative changes in spatial variability of crop biomass production following soil redistribution, which we know to be important for the test area¹⁶, we are confident that our parsimonious model system is robust enough to illustrate the general problem associated with tillage erosion in regions only slightly affected by other erosion processes¹⁵.

Our modelled landscape-scale yield losses suggest that deeper soils in depositional environments at least partly compensate for yield losses in erosional settings and that agricultural production is likely to continue in the Uckermark. Tillage erosion reduced landscape-scale yield potential, but yields did not collapse. As in other empirical studies focussing on erosion since the 1960s⁶, the significant differences in soil properties in eroded or depositional environments resulted in differences in crop yield and with the lowest yields on the hillslope and the highest in the valley bottoms. The lack of a major decline on yields may be because the area with more than 0.3 m soil loss, resulting in a substantial yield loss (Figure 4 left), is relatively small in our test region. Our findings are similar to results from a smaller catchment in Turkey¹⁹. Here soil truncation was modelled along with its potential yield effects on winter barley for a mountainous catchment in the Mediterranean over a period of 4000 years with catchment-scale crop yields estimated to drop by 22% from 2.80 t ha⁻¹ a⁻¹ before widespread deforestation to 2.19 t ha⁻¹ a⁻¹ at present, whereas deeper soils in the valley bottoms at least partly compensated for substantial yield loss on the

hillslopes. An additional factor that may explain the larger differences in the Turkish study¹⁹ is that the work focusses on areas of substantial water erosion¹⁸ representing environments with steep slopes and heavy rainfall events, where water erosion is a well-recognized important soil threat. In contrast, in the Uckermark water erosion plays only a minor role¹⁵.

A more substantial overall relative yield effect was modelled for winter wheat as compared to maize (Figure 5). Comparing the remote sensing-based biomass proxy with the modelled biomass based on soil loss and gain (Figure 4), gives an indication why the modelled maize yield effect following landscape-scale soil redistribution is somewhat underestimated. While modelled winter wheat yields immediately react to soil truncation (Figure 4 B), this is not the case for maize, which does not react to soil thinning of less than approximately 0.3 m (Figure 4A). The modelled response reflects the parameterisation of the crop model that produces a higher water use efficiency of maize over winter wheat, meaning that the maize produces more biomass per litre of water than the wheat and therefore is less prone, in the model realisation, to a reduction in water availability due to soil thinning. This is in agreement with results from the Berlin area²⁰, but not all studies concur. Europe wide modelling suggests that in Europe maize is more substantially affected by droughts than wheat²¹ which is supported by findings¹⁶ based on remote sensing of the our study area (see also Figure 4 right) that

slightly larger landscape-scale yield effects can be expected in case of maize. Therefore, it is likely that our modelled yield effects in case of maize are conservative.

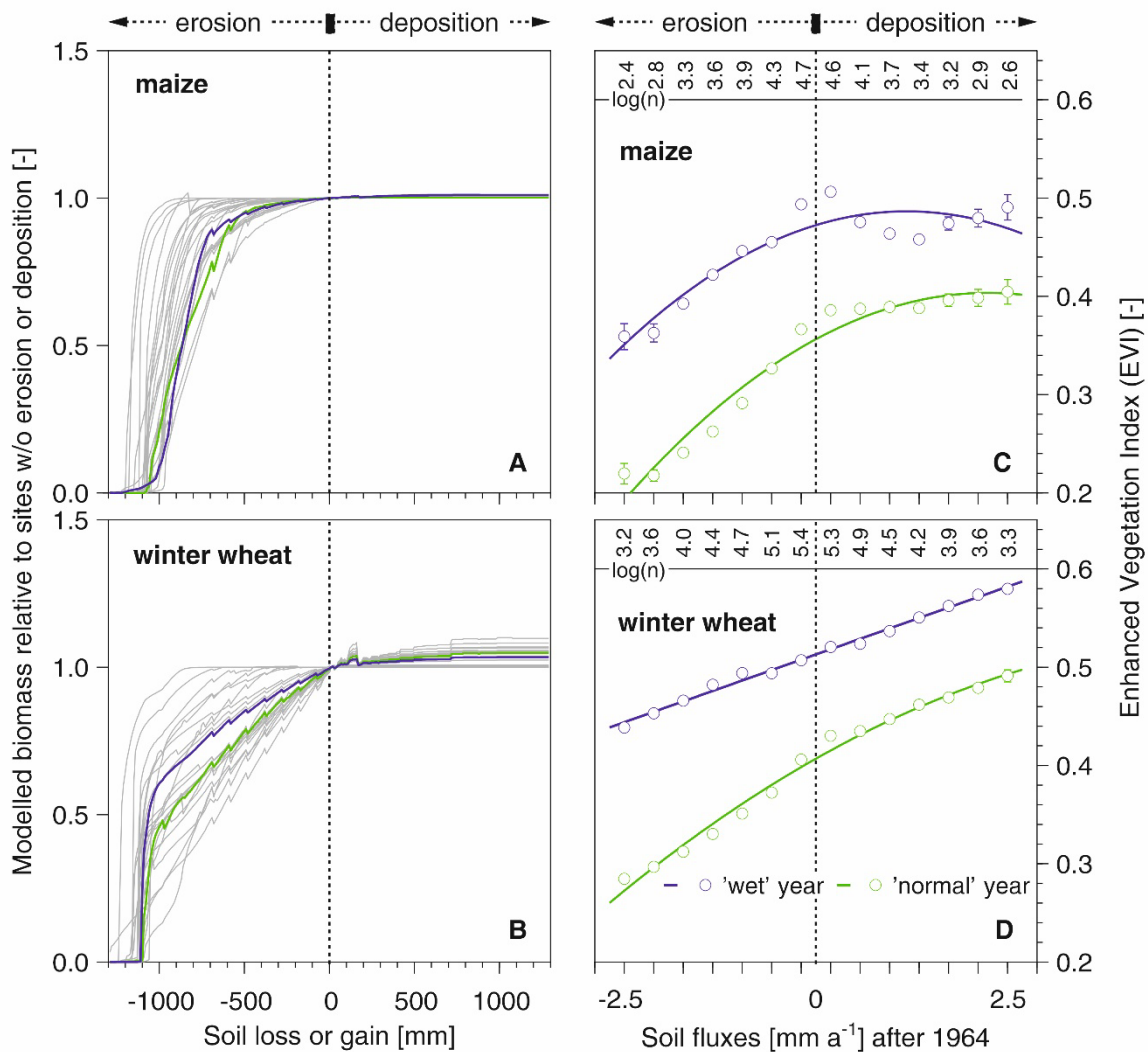


Figure 4. Modelled biomass production (with AQUACROP) of maize (A) and winter wheat (B) depending on soil loss and gain; Grey lines result from different climate between 1992 and 2017, while the blue and the green line represent a 'wet' and a 'normal to dry' year used for further analysis; Data given as relative biomass using biomass from profiles with no soil loss or deposition as 100%; (C, D) Mean enhanced vegetation index (EVI) as proxy variable for biomass in different classes of modelled tillage erosion induces soil fluxes; 'wet' and the 'normal' are coloured as done in the left panel; The EVI was derived from RapidEye satellite images from 2010 and 2015 (bands in VIS-NIR; resolution 5 x 5 m²); The tillage erosion modelling and the EVI analysis are described in detail in¹⁶; Note the modelled soil fluxes are aggregated in classes and are only indicators of

Quinton, J.N., Öttl, L.K., Fiener, P. 2022. Tillage exacerbates the vulnerability of cereal crops to drought. *Nature Food* 3 (6), 472-479

soil truncation and/or colluvial deposition as the duration of tillage erosion was not analysed; n is the number of pixels analysed per soil erosion class; error bars indicate 95%-confidence intervals of EVI within each class.

Based on the reference soil profiles from the Uckermark, we can identify a threshold of approximately 0.3 m of soil loss beyond which affected soils contribute little biomass (Figure 4). In our future scenarios, the area of soil in this class (soil thinning > 0.3 m) increases up to 100%. The increase in the area of soils which are non-productive highlights the need for urgent action to reduce soil thinning due to tillage.

In our scenarios we addressed different potential trajectories of future tillage practice (Figure 5) but, we did not use future climate scenarios, which indicate longer dry spells or phases of droughts during the growing period in the region²². However, our analysis comparing a normal to dry with a wet year clearly indicate that the downward landscape scale effect of tillage erosion on crop yields in the region is more pronounced in case of dryer conditions during the growing season (Figure 4 and 5). Hence, there is clear evidence that under projected future climate conditions the downward landscape scale yield effect will be amplified. Moreover, we ignored the potential effect of soil quality loss due to deposition of depleted topsoil material coming from strongly eroded sites (Figure 2). This will also strengthen the negative yield effect which might foster future adaptations of management towards irrigation in this already dry region of Northern Germany.

The increasing mechanisation of agriculture with significant innovation in agricultural machinery during the 1950s and 60s, increased the size, weight and speed of tractors and cultivators, has played a significant role in accelerating tillage erosion. For example, tractors' front and rear axle loads in Illinois (USA) have increased since 1960 by a factor of four and two, respectively⁴. It is hard to find measurements of pre-mechanisation tillage speeds, but contemporary measurements of horse-drawn ploughs in Ethiopia place speeds at between 3.2 and 4.7 km h⁻¹²³, or between 1.0 and 1.8 km h⁻¹ in case of ox-drawn mouldboard ploughing in Cuba³. By 1925 with the introduction of the tractor, a plough would be typically pulled through the soil at 4 to 6.4 km h⁻¹²⁴ and contemporary ploughing speeds are now in the range of 6.4 to 11.3 km h⁻¹²⁵, or even higher in case of non-inversion tillage (personal communication with farmers from the test site). Such an increase in tillage speeds accelerates tillage erosion² and hastens the thinning and thickening of soils in sloping landscapes. There is some indication that the rate of tillage translocation in mechanised agriculture may be slowing. In recent decades there have been substantial shifts in the types of machinery used to cultivate soils. At one time, mechanised cereal production was dominated by the mouldboard plough as a primary cultivation tool. Although, still widely used, there has been a shift towards non-inversion tillage and no-tillage systems. However, non-inversion systems utilising chisel ploughs in combination with powerful tractors have been demonstrated to move as much, if not more, soil than plough-based systems²⁶ due to high tillage speeds. No-tillage systems, where seeds are sown directly into undisturbed soil, translocate an order of magnitude less soil than conventional tillage systems²⁷ and therefore represent the best option for reducing the translocation of soil in agricultural landscapes.

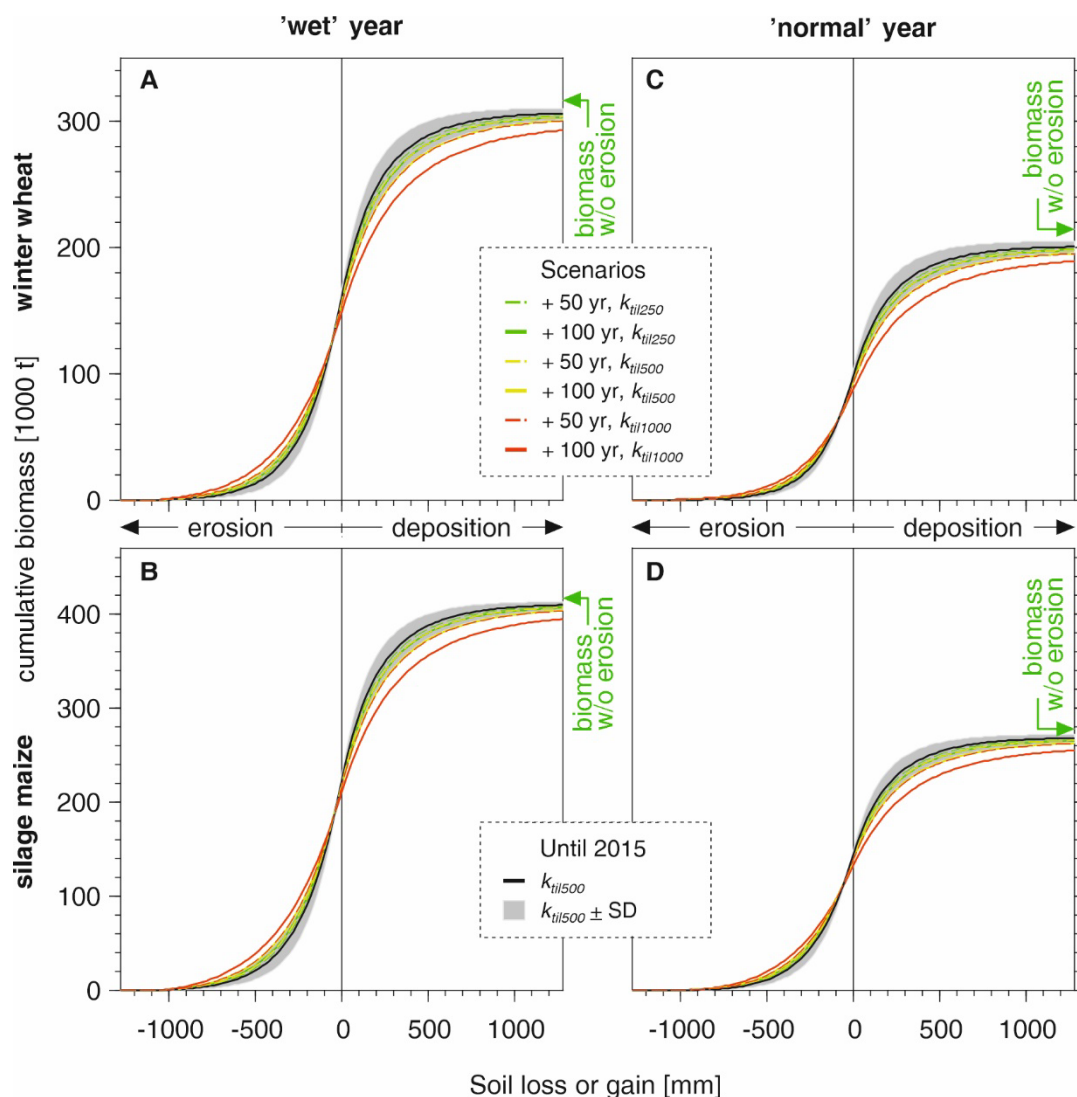


Fig. 5. Changes in modelled cumulative landscape-scale biomass production for different tillage scenarios for the 'wet' (A, B) and the 'normal to dry' year (C, D) in case of winter wheat (A, C) and silage maize (B, D). Definitions of years given in supplementary material. The bold black lines indicate the actual mean with grey shaded areas giving the uncertainty of the results (\pm one standard deviation of modelled mean soil loss or gain). The coloured lines indicate six scenarios for 50 and 100 yr of additional tillage, with reduced tillage (green), tillage equal to mean of last 50 years (yellow), and increased tillage representing heavier and faster machines used for tillage (red). The tillage intensity of the different scenarios is given as tillage coefficient k_{til} of 250, 500, and 1000 used in SPEROS-C. The green arrows on the right side of the panels indicate modelled cumulative biomass without soil loss or deposition. Note: Increasing soil loss leads to decreasing biomass production but the cumulative biomass production of erosional sites (as given in the figure) increases as the area affected by soil loss is increasing.

As our results suggest that tillage erosion rates accelerated during phases of intensified agricultural mechanisation, it is clear that most pronounced future changes in tillage erosion can be expected in those regions where agricultural mechanisation is still minimal. The region with the largest mechanisation gap, and hence largest potential for accelerating tillage erosion is Africa. Tractor use in sub-Saharan Africa was at 1.3 tractors per 1,000 ha in 2002 (the last date for which FAO²⁸ holds data on farm machinery for much of the world) compared to 9.1 tractors per 1,000 ha in South Asia and 10.4 tractors per 1,000 ha in Latin America for the same year²⁹. With increasing areas of land coming into cultivation²⁸ and gross national per capita income rising across Sub-Saharan Africa³⁰ it can be assumed that agricultural mechanisation may also increase in the region³¹ presenting a risk to the soils of the continent and highlights the need to develop no-tillage systems adapted to the regional socio-economic and environmental conditions.

Tackling the impact of tillage erosion is problematical. In cases, such as the Uckermark, where redistribution may have already gone too far, the only option is to relocate soil from the base of the slope to the top of slope in attempt to rebuild soils. Anecdotally, farmers have been doing this for generations (Lobb, pers. com) and it has been demonstrated experimentally that adding 10 cm topsoil to severely thinned hillcrests in Manitoba, Canada led to significantly greater yields than on those sites with no soil additions³². Clearly, the best option is to prevent tillage erosion altogether and the adoption of practices that have virtually eliminated soil redistribution has taken place at scale. Large tracts of arable land in South America are managed using no-tillage systems that minimise soil disturbance³³ and are one of the central platforms of conservation agriculture. In addition, soil conservation practices which seek to reduce the effective slope of the land, for example terracing or the use of contour grass strips, force farmers to cultivate parallel to the contour reducing tillage erosion rates.

Further work is needed to adapt the principles of no-tillage and/or at least taking tillage erosion into account. This could include using precision agriculture to manage tillage speeds and depths in sloping agricultural land to arrest the redistribution of soils in agricultural landscapes. Also, we need to understand better how soil redistribution impacts on soil carbon, nitrogen and phosphorus cycles and water availability in contrasting arable landscapes and how these changes impact on biomass production. This understanding should lead to the development of models which will allow us to assess the future sustainability of agricultural production in response to climate, land-use, and technological change.

Methods

Measured soil loss and yields from plots

To identify relevant data on soil loss or soil truncation on biomass production and yields, we conducted a systematic search of the experimental erosion literature. We focussed on soil surface removal plot experiments (often called desurfacing experiments), where yields on plots, typically in the order of a few tens of square meters, without artificial removal of surface soil are compared to treated plots. We used predefined search terms (desurfacing, soil removal, erosion & yield) in ISI-Web-of-Knowledge and Scopus databases. From the search results we identified two sets of plot studies: (i) Studies containing plot data on extend of desurfacing and its effects on wheat yields, which also contain fertilized and not fertilized treatments, allowing a comparison of effect of surface lowering on yields in high vs. low input agricultural systems (see Figure 3)^{9,17,34-41}; (ii) studies where the relative or absolute reduction of soil thickness was given, here only three studies¹⁰⁻¹² analysing maize and barley yields were identified.

Modelled soil redistribution and biomass for landscapes

We used well- established modelling tools to illustrate the impact of long-term tillage on crop production in the Quillow catchment (Supplementary Figure S3), an area of predominantly arable farming in Northern Germany, following a three-step approach: (1) Area-specific non-eroded soil profiles modified to represent soil truncation or colluvial deposition were used to model biomass production under different soil erosion conditions with AQUACROP¹³; (2) Long-term landscape-scale soil redistribution due to tillage was modelled based on the spatially distributed model SPEROS-C^{14,42}; (3) Profile-based modelled biomass and modelled spatially distributed soil thinning or thickening due to tillage erosion were then combined to determine overall impacts of soil redistribution by tillage on biomass production on a landscape-scale.

Test catchment

The Quillow test catchment (196 km²) is located about 100 km north of Berlin, Germany (Supplementary Figure S3). It represents a typical ground moraine landscape, formed after the retreat of the Weichselian glaciers (approx. 15 ka BP), typically found in large areas of North-East Germany. The hilly area is characterized by small hummocks and a large number of kettle holes draining via groundwater. The mean slope of the catchment is about 7%. Land use is dominated by arable land (approx. 70%). Due to its fertile soils large parts of the catchment have been used for agricultural production for over 1000 years and some areas since Neolithic times^{43,44}. In the early 1970s agriculture was intensively mechanised and field sizes were substantially enlarged (mean field size 22 ha). Crops typically planted are winter wheat (*Triticum aestivum* L.), winter barley (*Hordeum vulgare* L.), rapeseed (*Brassica napus*

L.) and maize (*Zea mays* L.). The catchment is characterized by a subcontinental climate with an average annual air temperature of 8.6 °C and a mean annual precipitation of about 500 mm (30-year average 1981-2010). The average precipitation during the growing season (April to September) is approximately 350 mm (1989-2017) (meteorological data from the Dedelow Experimental Field Station of ZALF (53°36'N, 13°80'E; Figure S4)). The primary soils developed from glacial till are Luvisols⁴⁵, but typical sequences of erosion-affected soils can be found due to the long history of arable land use and the hilly terrain.

Daily soil temperature, global radiation, relative humidity, air temperature, potential evaporation, and wind speed between 1992 and 2017 used for modelling were taken from climatic records from the ZALF station at Dedelow, Germany (53°36'N, 13°80'E). Due to the 25 years record a wide range of annual and seasonal climatic variation (especially precipitation; Supplementary Figure S4) was used for the modelling. Data for the spatial distribution of the Enhanced Vegetations Index (EVI), a proxy variable for biomass production, of winter wheat were derived from RapidEye data in 2010 and 2015 taken from Öttl, et al. ¹⁶. Note, 2010 and 2015 represent a 'wet' and a 'normal' year regarding precipitation during the growing season (Supplementary Figure S4).

Topography for use in SPEROS-C is represented by a 5 m x 5 m Lidar-based digital elevation model (Landesamt für Umwelt & Landesvermessung und Geobasisinformation Brandenburg, 2012). Field boundaries are also important for modelling tillage erosion and are taken from an earlier study¹⁶ and represent the situation in 2010.

Crop modelling

We assumed that crops were not nutrient limited as farmers used inorganic fertilizers to manage crop nutrition. Therefore, we focused on the impact of soil redistribution on water availability. To simulate crop response to change in water availability in different soils the daily timestep FAO-AQUACROP model¹³ was used. FAO offers a menu-driven version of the model and versions suitable for executing without a graphical interface. For this work we used a version of the model designed for use in a GIS environment (AQUACROP GIS file builder and AQUACROP plugin version 4.0) which allowed multiple runs to be made quickly with different parameter sets. The model is described in detail in Steduto, et al. ¹³, but in brief it calculates transpiration which is translated into biomass. This is adapted to local conditions using the biomass productivity parameter which is normalised for evaporative demand and air CO₂ concentration. The crops response to water is simulated based on water stress and its effect on canopy expansion, stomatal control of transpiration, canopy senescence and the harvest index. Soil water availability is determined for up five soil layers for which the user specifies characteristics. The model calculates a water balance for each timestep-based on infiltration, drainage, runoff, root uptake in different layers, deep percolation, evaporation, transpiration, and capillary rise.

Soil data

The soil component of AQUACROP was parameterised based on three representative soil profiles unaffected by soil loss and deposition drawn from the data base of the Leibniz Centre for Agricultural Landscape Research ZALF in Müncheberg, Germany (Supplementary Table S2). These profiles (Calcic Luvisols; WRB, 2015) represent about 20% of arable land, while in general the Uckermark soils are strongly modified by soil erosion over the past centuries^{43,46}. These were then combined into one standard profile as follows. Almost all of the pedogenic horizons were the same for the three soils and only differed in their depth and slight textural variation. Therefore, the mean value of depth, sand and clay was calculated for each horizon. Only a different approach was required in the case of one of the profiles where two of its horizons did not exist in the other two soils (Bt3 and Bt4). In this case the data for the Bt3 and Bt4 horizons was combined with the Bt2 horizon for that soil to give a new average condition. The mean values for horizon depth and the hydraulic parameters for each horizon used in AQUACROP are given in Supplementary Table S3.

The response of crop yield to tillage erosion was simulated based on modifying the standard profiles (Supplementary Table S2 and S3) as follows. In the case of deposition, the profile was grown by changing the Ap horizon depth. The properties of the new material were assumed to be the same as that of the existing Ap horizon. In the case of a profile losing soil, the soil was lost from the surface soil and the depth of each horizon, except that at the base of the profile, extended into the horizon below by an amount corresponding to the eroded depth. The properties of each of the horizons were then recalculated by mixing in the relevant proportion of the horizon below. For example, the loss of 10 mm from the surface of a 100 mm thick Ap horizon would mean that 10 mm of material from the B horizon was incorporated into the Ap and the properties of the Ap would reflect a mixture of 90% of the original Ap and 10% of the B horizon. New soil profiles representing 1-cm steps of soil thinning and thickening were created for a maximum soil loss and gain of 130 cm, which in case of soil loss would represent a total loss of the A and B horizon. Based on the changes in texture, soil organic carbon and thickness of the new profiles the hydraulic properties (see Supplementary Table S3) of the new profiles are derived within AQUACROP using standard pedo-transfer functions⁴⁷. However, it is important to note that moisture content at field capacity and wilting point in the eroded profiles will be somewhat underestimated as the dynamic replacement of soil organic carbon is ignored at the newly created eroded profiles. This will affect plant available water, but not nutrient supply as we assume no nutrient limitation of any of the profiles. Overall, 260 new soil profiles representing different stages of soil thinning and thickening were created and used for modelling biomass production for the different climatic conditions. These new profiles and their crop yields were translated to the entire test catchment using the modelled spatially distributed soil thinning or thickening based on SPEROS-C (see below).

Crop parameters were drawn from standard AQUACROP files for maize and winter wheat and modified for North European conditions to reflect planting timings and plant growth curves. To check the performance of modelled crop biomass and yield for maize and winter wheat in the Uckermark, biomass was modelled for the average undisturbed soil profile for the years 1992 to 2017 and compared to the mean biomass for the region as given in agricultural statistics (see Supplementary material for more detail). There was no significant difference in wheat yield between the simulated and measured data over the study period, however, simulated maize biomass was an average of 18% lower year-on-year. We concluded that that the modelling approach was reasonable an approach focussing on relative differences in biomass production at different landscape positions.

Soil redistribution by tillage modelling

Soil redistribution by tillage was modelled using a diffusion-type equation developed by Govers, et al. ⁴⁸ as implemented in the spatially distributed model SPEROS-C. Tillage erosion is modelled using Eq. 1 and 2 in a spatial context.

$$Q_{til} = -k_{til} \cdot s = -k_{til} \cdot \frac{\partial h}{\partial x} \quad (2)$$

where Q_{til} is the net flux due to tillage, k_{til} is the tillage transport coefficient ($\text{kg m}^{-1} \text{yr}^{-1}$), s is the local slope (%), h is the height at a given point of the hillslope (m) and x is the distance in the horizontal direction (m). The local tillage-induced erosion or deposition rate E_{til} ($\text{kg m}^{-2} \text{yr}^{-1}$) has been calculated as

$$E_{til} = -\frac{\partial Q_{til}}{\partial x} = k_{til} \cdot \frac{\partial^2 h}{\partial x^2} \quad (3)$$

The tillage transport coefficient k_{til} depends on the tillage implement, tillage speed, tillage depths, bulk density, texture, and soil moisture at the time of tillage².

The model calculates sediment redistribution within each field with a raster resolution of 5 m x 5 m, which results in data for roughly 5 million raster cells within the Quillow catchment.

While this tillage erosion approach generally leads to reasonable results over several decades as validated against tracer data¹⁵, the modelling over several centuries (necessary to address long-term soil loss and gain) in our test site is associated with large uncertainties. These are mostly associated with missing or only weak parameter values, especially for land use and land management over such long-time span. Moreover, the change in topography over time is difficult to address. Although it is documented that arable land use started roughly 1000 year before present⁴⁴ in the test region, we neither have detailed land use change, field layout data nor detailed data concerning land management (crop rotations, tillage intensity etc.) for that long period. Consequently, the uncertainties associated with these unknown details were addressed by taking a simplified approach to parameterisation. Topography and field layout were not reconstructed. To avoid artificial results due to a stable digital elevation model, all

modelled tillage erosion results were smoothed using a moving average in 3 x 3 raster kernels. Potential erosion patterns associated with the field borders of smaller fields were ignored, as the soil loss and gain patterns along former field borders would be partly erased due to the use of heavy machinery from the 1960s onwards.

To robustly estimate the cumulative tillage erosion, which can be expressed in a cumulative k_{til} (see yearly k_{til} in Eq. 2 and 3), since cultivation started, we used two independent approaches.

(1) Based on Kappler et al.⁴⁴ we simply assume that tillage in the entire area used for agriculture today started 1000 years ago. To account for differences in tillage intensity during this long period the k_{til} value for different time spans was estimated based on (i) earlier, erosion tracer (²³⁹⁺²⁴⁰Pu) measurements¹⁵ representing roughly the time from 1960s to 2015, which were performed within the test site (see super test site in Supplementary Figure S3). (ii) Earlier k_{til} values were estimated based on literature values for different kind of tillage techniques ranging from horse pulled to mechanized systems² and the assumption that before 1850 no mechanized tillage occurred. This resulted in a cumulative k_{til} value of 186125 kg m⁻¹ (Supplementary Table S1). Assuming that SPEROS-C in general is able to reproduce tillage erosion patterns (see¹⁵) in the region this should result in a reasonable soil truncation and colluviation, which, however is associated with relative large uncertainties due to the rough estimates of model input parameters.

(2) To achieve more confidence in these results we used a second independent approach using the current remote sensing-based spatial distribution of biomass production of winter wheat in the test area, in combination with modelled soil loss/deposition affected biomass. Based on Öttl, et al.¹⁶ the raster cell-specific, EVI derived, mean biomass of winter wheat for 2010 and 2015 (approximately 5x10⁶ raster cells) was determined, while using an EVI-biomass relation presented by Jin et al.⁴⁹. The spatially distributed mean biomass was transferred into spatially distributed soil loss and soil gain using the results of the winter wheat modelling for these specific years with AQUACROP, assuming different soil truncation and colluviation (Figure 4). Under the assumption that tillage erosion is one of the dominant processes of the variability in soil properties in the region^{15,19}, the resulting soil loss and gain map was used to test and calibrate the outputs of SPEROS-C. This was done for eight different erosion and deposition classes, by increasing the cumulative k_{til} in a stepwise fashion so that the number of raster cells per soil erosion class in SPEROS-C aligned with the class derived from the biomass/soil erosion map. The calibration was done for each of the soil erosion classes separately, so a mean optimal cumulative k_{til} and its standard deviation could be calculated. Keeping the simplified time periods with different k_{til} values as used in the first approach (Supplementary Table S1) which a constant k_{til} before 1850 (150 kg m⁻¹ yr⁻¹), the mean time since tillage was introduced could be calculated to additionally test plausibility. With the calibration an approximate time since tillage started in the region as 1073 ± 299 years ago

(based on modelling from 2015 backward) could be estimated. This compares well to the results of the first approach and our original assumption of 1000 years before present as the start-date for tillage in the region and is in line with geo-archaeological findings of Kappler, et al.⁴⁴, indicating that substantial agriculturally induced soil erosion in the region did not occur before the beginning of the last millennium.

Given the challenges of modelling soil redistribution by tillage over 1000 years, the similar results of both approaches described gives confidence in the robustness of the cumulative tillage erosion modelling. However, to at least account for some uncertainty in the cumulative tillage erosion, all modelled erosion results are always based on the mean calibrated cumulative k_{til} and its standard deviation (see Supplementary Table S3). This results in a range of soil truncation and colluvial accumulation as given in Supplementary Figure S2.

Combined biomass and tillage erosion modelling

Results from tillage erosion and biomass modelling were combined in a Geographic Information System. Therefore, the soil loss or gain from the tillage erosion model was classified into the 130 thinning and 130 thickening soil profiles as used to determine crop growth based on the modified standard soil profiles with AQUACROP. This resulted in a spatially distributed profile information in a 5 m x 5 m raster for the entire test region. For each of the 260 soil profiles the biomass was modelled for winter wheat and maize with AQUACROP for the different years. The results of the biomass modelling were then spatially distributed according to the profiles modelled with SPEROS-C.

This coupling allowed the determination of the effects of tillage erosion on biomass production at a landscape-scale, while considering the effect of different seasonal weather conditions and crops. To determine the net effect on biomass production on all fields the results of the combined models were compared to the results from an AQUACROP modelling on the undisturbed standard soil profiles.

This combined modelling also allowed the assessment of future effects of soil loss and gain on biomass production for different tillage scenarios for the next 50 and 100 years. These tillage scenarios use k_{til} values from other studies² to address future reduced tillage ($k_{til} = 250 \text{ kg m}^{-1} \text{ yr}^{-1}$), intensified tillage ($k_{til} = 1000 \text{ kg m}^{-1} \text{ yr}^{-1}$) or a business as usual approach with a k_{til} of $500 \text{ kg m}^{-1} \text{ yr}^{-1}$.

It is important to note that our scenarios are based on a 'wet' and 'normal' years for the relatively dry region. Hence, the scenarios are somewhat conservative in the effect of soil redistribution by tillage on yields as the effects we simulated would be amplified in case of potentially reduced or more variable rainfall during the growing season.

Acknowledgements

The authors acknowledge funding from: the DAAD Research Stays for University Academics and Scientists programme (91725147) (JNQ) and Soil Hydrology research platform underpinning innovation to manage water scarcity in European and Chinese cropping systems, (H2020-SFS-2016-2017/H2020-SFS-2017-2) (JNQ) and the DFG Project “Tillage erosion affects crop yields and carbon balance in hummocky landscapes” (FI 1216/12-1) (LÖ). Moreover, we acknowledge the support and the data provision from the Landscape Pedology Working Group, Leibniz Centre for Agricultural Landscape Research ZALF e.V., Müncheberg, Germany.

Author contributions

JNQ and PF have equally contributed to the design, literature review, modelling and preparing the manuscript, LÖ supported the modelling and evaluated the remote sensing data for the test site.

Data Availability

Source data are provided with this paper.

Code availability

Aquacrop for GIS is available as an executable file from <https://www.fao.org/aquacrop/software/aquacrop-gis/en/> . SPEROS-C is available on request from PF.

Competing interests

The authors declare no competing interests

References

- 1 Quinton, J. N., Govers, G., Van Oost, K. & Bardgett, R. D. The impact of agricultural soil erosion on biogeochemical cycling. *Nature Geosci.* **3**, 311-314 (2010).
- 2 Van Oost, K., Govers, G., De Alba, S. & Quine, T. A. Tillage erosion: a review of controlling factors and implications for soil quality. *Progress Phys. Geogr.* **30**, 443-466 (2006).
- 3 Wildemeersch, J. C. J. *et al.* Tillage erosion and controlling factors in traditional farming systems in Pinar del Río, Cuba. *Catena* **121**, 344-353 (2014).
- 4 Schjønning, P. *et al.* Driver-Pressure-State-Impact-Response (DPSIR) analysis and risk assessment for soil compaction - a European perspective. *Adv. Agron.* **133**, 183-237 (2015).
- 5 Switoniak, M. Issues relating to classification of colluvial soils in young morainic areas (Chełmno and Brodnica Lake District, northern Poland). *Soil Sci. An.* **66**, 57-66 (2015).
- 6 Heckrath, G. *et al.* Tillage erosion and its effect on soil properties and crop yield in Denmark. *J. Environ. Qual.* **34**, 312-324 (2005).
- 7 Zhang, L. L. *et al.* Effect of soil erosion depth on crop yield based on topsoil removal method: a meta-analysis. *Agron. Sustain. Dev* **41** (2021).

- 8 Bakker, M. M., Govers, G. & Rounsevell, M. D. A. The crop productivity-erosion relationship: An analysis based on experimental work. *Catena* **57**, 55-76 (2004).
- 9 Larney, F. J., Janzen, H. H., Olson, B. M. & Olson, A. F. Erosion-productivity-soil amendment relationships for wheat over 16 years. *Soil Till. Res.* **103**, 73-83, doi:10.1016/j.still.2008.09.008 (2009).
- 10 Swan, J. B., Shaffer, M. J., Paulson, W. H. & Peterson, A. E. Simulating the effect of soil depths and climate factors on corn yield. *Soil Sci. Soc. Am. J.* **51**, 1025-1032 (1987).
- 11 Rejman, J., Iglík, I., Paluszek, J. & Rodzik, J. Soil redistribution and crop productivity in loess areas (Lublin Upland, Poland). *Soil Till. Res.* **143**, 77-84, doi:10.1016/j.still.2014.05.011 (2014).
- 12 Gollany, H. T., Schumacher, T. E., Lindstrom, M. J., Evenson, P. D. & Lemme, G. D. Topsoil depth and desurfacing effects on properties and productivity of a Typic Argiustoll *Soil Sci. Soc. Am. J.* **56**, 220-225 (1992).
- 13 Steduto, P., Hsiao, T. C., Raes, D. & Fereres, E. AquaCrop-The FAO Crop Model to Simulate Yield Response to Water: I. Concepts and Underlying Principles. *Agron. J.* **101**, 426-437, doi:10.2134/agronj2008.0139s (2009).
- 14 Fiener, P., Dlugoš, V. & Van Oost, K. Erosion-induced carbon redistribution, burial and mineralisation - Is the episodic nature of erosion processes important? *Catena* **133**, 282-292 (2015).
- 15 Wilken, F., Ketterer, M., Koszinski, S., Sommer, M. & Fiener, P. Understanding the role of water and tillage erosion from 239+240Pu tracer measurements and inverse modelling. *SOIL* **6**, 549-564 (2020).
- 16 Öttl, L. K. *et al.* Tillage erosion as main driver of in-field biomass patterns in an intensively used hummocky landscape. *Land Degrad. Dev.* **32**, 3077-3091, doi:https://doi.org/10.1002/ldr.3968 (2021).
- 17 Masee, T. W. & Waggoner, H. O. Productivity losses from soil erosion on dry cropland in the intermountain area. *Soil Water Cons.* **40**, 447-450 (1985).
- 18 Yang, W. G., Zhang, X. C., Gong, W., Ye, Y. Y. & Yang, Y. S. Soil erosion and corn yield in a cultivated catchment of the Chinese Mollisol region. *Plos One* **14**, doi:10.1371/journal.pone.0221553 (2019).
- 19 Van Loo, M. *et al.* Human induced soil erosion and the implications on crop yield in a small mountainous Mediterranean catchment (SW-Turkey). *Catena* **149**, 491-504, doi:https://doi.org/10.1016/j.catena.2016.08.023 (2017).
- 20 Mueller, L., Behrendt, A., Schalitz, G. & Schindler, U. Above ground biomass and water use efficiency of crops at shallow water tables in a temperate climate. *Agric. Water Manag.* **75**, 117-136, doi:10.1016/j.agwat.2004.12.006 (2005).
- 21 Webber, H. *et al.* Diverging importance of drought stress for maize and winter wheat in Europe. *Nature Commun.* **9**, 4249 (2018).
- 22 Reiner mann, S., Gessner, U., Asam, S., Kuenzer, C. & Dech, S. The effect of droughts on vegetation condition in Germany: An analysis based on two decades of satellite earth observation time series and crop yield statistics. *Remote Sens.* **11** (2019).

- 23 Fentahun, T., Amare, D. & Abera, M. Evaluation of single yoke implement, harnessed and drawn by horse for cultivation of farm lands in north-western Ethiopia. *J. Agric. Res.* **2**, 38-46 (2014).
- 24 Keen, B. A. Physics in Agriculture. *Nature* **116**, 905-907 (1925).
- 25 Hessel, Z. R. Fuel Requirements and Energy Savings Tips for Field Operations. (Rutgers Cooperative Extension, New Brunswick, 2007).
- 26 Lobb, D. Understanding and managing the causes of soil variability. *Soil Water Cons.* **66**, 175A-179A, doi:10.2489/jswc.66.6.175A (2011).
- 27 Li, S., Lobb, D. A. & Lindstrom, M. J. Tillage translocation and tillage erosion in cereal-based production in Manitoba, Canada. *Soil Till. Res.* **94**, 164-182 (2007).
- 28 FAOSTAT. (FAO, 2020).
- 29 Pingali, P. in *Handbook of Agricultural Economics* Vol. 3 (eds R. Evenson & P. Pingali) Ch. 54, 2779-2805 (Elsevier, 2007).
- 30 Worldbank. (2020).
- 31 Sims, B. & Kienzle, J. Making mechanization accessible to smallholder farmers in sub-Saharan Africa. *Environmets* **2**, 136-166 (2015).
- 32 Papiernik, S. K. *et al.* Soil properties and productivity as affected by topsoil movement within an eroded landform. *Soil Till. Res.* **102**, 67-77 (2009).
- 33 Derpsch, R., Friedrich, T., Kassam, A. & Hongwen, L. Current status of adoption of no-till farming in the world and some of its main benefits *Int. J. Agric. Biol. Engine.* **3**, 1-25 (2010).
- 34 Allen, B. L., Cochran, V. L., Caesar, T. & Tanaka, D. L. Long-term effects of topsoil removal on soil productivity factors, wheat yield and protein content. *Arch. Agron. Soil Sci.* **57**, 293-303 (2011).
- 35 Gorji, M., Rafahi, H. & Shahoe, S. Effects of surface soil removal (simulated erosion) and fertilizer application on wheat yield. *J. Agri. Sci. Tech.* **10**, 317-323 (2008).
- 36 Izaurrealde, R. C., Malhi, S. S., Nyborg, M., Solberg, E. D. & Quiroga Jakas, M. C. Crop performance and soil properties in two artificially eroded soils in north-central Alberta. *Agron. J.* **98**, 1298-1311 (2006).
- 37 Tanaka, D. L. & Aase, J. K. Influence of topsoil removal and fertilizer application on spring wheat yields. *Soil Sci. Soc. Am. J.* **53**, 228-232 (1989).
- 38 Masee, T. W. Simulated erosion and fertilizer effects on winter wheat: Cropping intermountain dryland area. *Soil Sci. Soc. Am. J.* **54**, 1720-1725 (1990).
- 39 Larney, F. J. *et al.* Soil erosion-crop productivity relationships for six Alberta soils. *J. Soil Water Cons.* **50**, 87-91 (1995).
- 40 Brunel, N., Meza, F., Ros, R. & Santibanez, F. Effects of topsoil loss on wheat productivity in dryland zones of Chile. *J. Soil Sci. Plant Nutri.* **11**, 129-137 (2011).
- 41 Dormaar, J. F., Lindwall, C. W. & Kozub, G. C. Restoring productivity to an artificially eroded dark brown chernozemic soil under dry land conditions. *Can. J. Soil Sci.* **66**, 273-285 (1986).
- 42 Van Oost, K., Quine, T., Govers, G. & Heckrath, G. in *Advances in soil science. Soil erosion and carbon dynamics* (eds E. J. Roose *et al.*) 37-51 (CRC Press, 2005).
- 43 Sommer, M., Gerke, H. H. & Deumlich, D. Modelling soil landscape genesis — A “time split” approach for hummocky agricultural landscapes. *Geoderma* **145**, 480-493 (2008).

- 44 Kappler, C. *et al.* Stratigraphy and age of colluvial deposits indicating Late Holocene soil erosion in northeastern Germany. *Catena* **170**, 224-245 (2018).
- 45 WRB, I. W. G. World Reference Base for Soil Resources 2014, update 2015 International soil classification system for naming soils and creating legends for soil maps. (FAO, Rome, 2015).
- 46 Koszinski, S., Gerke, H. H., Hierold, W. & Sommer, M. Geophysical-based modeling of a kettle hole catchment of the morainic soil landscape. *Vadose Zone J.* **12**, doi:10.2136/vzj2013.02.0044 (2013).
- 47 Saxton, K. E., Rawls, W. J., Romberger, J. S. & Papendick, R. I. Estimating Generalized Soil-water Characteristics from Texture. *Soil Sci. Soc. Am. J.* **50** 1031-1036, (1986).
- 48 Govers, G., Vandaele, K., Desmet, P., Poesen, J. & Bunte, K. The role of tillage in soil redistribution on hillslopes. *Eur. J. Soil Sci.* **45**, 469-478 (1994).
- 49 Jin, X. *et al.* Winter wheat yield estimation based on multi-source medium resolution optical and radar imaging data and the AquaCrop model using the particle swarm optimization algorithm. *ISPRS J. Photogram. Remote Sens.* **126**, 24-37, (2017).
- 50 Ritchie, H. & Roser, M. Crop Yields. Published online at OurWorldInData.org. Retrieved from: 'https://ourworldindata.org/crop-yields' [Online Resource].
- 51 Statistisches Bundesamt - DSTATIS. Statistical data from Brandenburg (Statistisches Bundesamt, Wiesbaden, Germany, 2021). https://www.statistischebibliothek.de/mir/receive/DESerie_mods_00000498 (05/07/2021)
- 52 Anonymous. Statistical winter wheat yield data from the rural district of the Uckermark. (Data base of the Leibniz Centre for Agricultural Landscape Research ZALF in Müncheberg, Germany, 2019)