

1 **Aerobically trained older adults show impaired resting, but preserved exercise-induced circulating progenitor cell**  
2 **count, which was not improved by sprint interval training**

3

4 **Zerbu Yasar<sup>1\*</sup>, Mark D Ross<sup>2</sup>, Christopher J Gaffney<sup>3</sup>, Ruth D Postlethwaite<sup>4</sup>, Russell Wilson<sup>2</sup>, Lawrence D Hayes<sup>5</sup>**

5

6 <sup>1</sup>Active Ageing Research Group, Institute of Health, University of Cumbria, Lancaster, UK; <sup>2</sup>School of Applied Sciences,  
7 Edinburgh Napier University, Edinburgh, UK; <sup>3</sup>Lancaster Medical School, Faculty of Health and Medicine, Lancaster  
8 University, Lancaster, UK; <sup>4</sup>Faculty of Health and Life Sciences, Coventry University, Coventry, UK; <sup>5</sup>Institute of Clinical  
9 Exercise and Health Science, School of Health and Life Sciences, University of the West of Scotland, Glasgow, UK

10

11 **\*Correspondence:**  
12 Zerbu@hotmail.co.uk

13 **Keywords: Ageing, endothelial, endothelial progenitor cells, HIIT, sprint, vascular**

14

15

16

17

18

19

20

21

22

23

24

25

26

27

28

29

30

31

32 **ABBREVIATIONS**

33 ANOVA: analysis of variance

34 BLa: blood lactate

35 BMI: body mass index

36 CPC: circulating progenitor cell

37 CV: cardiovascular

38 EPC: endothelial progenitor cell

39 HIIT: high-intensity interval training

40 N<sub>2</sub>: nitrogen

41 O<sub>2</sub>: oxygen

42 PPO: peak power output

43 RER: respiratory exchange ratio

44 RPE: rating of perceived exertion

45 SD: standard deviation

46 SIT: sprint interval training

47 VO<sub>2</sub>: oxygen uptake

48 VO<sub>2peak</sub>: peak oxygen uptake

49

50

51

52

53

54

55

56

57

58

59

60

61 **ABSTRACT**

62 **Purpose:** Older adults exhibit reduced number and function of CD34<sup>+</sup> circulating progenitor cells (CPC), a known risk  
63 factor for cardiovascular disease. Exercise promotes mobilisation of CPCs from bone marrow so whether aging *per se* or  
64 physical inactivity in older age reduces CPCs is unknown. Thus, this study examined the effect of age on resting and  
65 exercise-induced changes in CPCs in aerobically trained adults, and the effect of 8-weeks of sprint interval training (SIT)  
66 on resting and exercise-induced CPCs in older adults.

67 **Methods:** Twelve young (22-34 years) and nine older (63-70 years) adults participated in the study. Blood was sampled  
68 pre, and immediately post a graded exercise test to exhaustion in both groups. Older participants repeated the process after  
69 8 weeks of SIT (3 x 20 s 'all-out' sprints, 2 x a week). Total CPCs (CD34<sup>+</sup>) and endothelial progenitor cells (EPCs:  
70 CD34<sup>+</sup>KDR<sup>+</sup>) were determined by flow cytometry.

71 **Results:** Older adults exhibited lower basal total CD34<sup>+</sup> CPCs ( $828 \pm 314$  vs.  $1186 \pm 272$  cells·mL<sup>-1</sup>,  $p = 0.0149$ ) and  
72 CD34<sup>+</sup>KDR<sup>+</sup> EPCs ( $177 \pm 128$  vs.  $335 \pm 92$  cells·mL<sup>-1</sup>,  $p = 0.007$ ) than younger adults. The maximal exercise test increased  
73 CPCs in young (CD34<sup>+</sup>:  $p = 0.004$ ; CD34<sup>+</sup>KDR<sup>+</sup>:  $p = 0.017$ ) and older adults (CD34<sup>+</sup>:  $p < 0.001$ ; CD34<sup>+</sup>KDR<sup>+</sup>:  $p = 0.008$ ),  
74 without difference between groups ( $p = 0.211$ ). SIT did not alter resting or exercise-induced changes in CPCs in the older  
75 cohort ( $p > 0.232$ ).

76 **Conclusion:** This study suggests age *per se* does not impair exercise-induced CPC counts, but does lower resting CPC  
77 counts.

78

79

80

81

82

83

84

85

86

87

88

89

90

91

92

93

94

95

96

97

## 98 1 INTRODUCTION

99 Advancing age is associated with increased risk of onset and progression of cardiovascular disease (CVD) (Lozano et al.,  
100 2012), often attributed to comorbidities such as hypertension (Rapsomaniki et al., 2014; Tran et al., 2018), diabetes and  
101 hyperlipidemia (Tran et al., 2018). Advancing age is also associated with reduced endothelial function (Black et al.,  
102 2008) and vascular reparative capacity, indicated by reduced circulating progenitor cell (CPC) count and function (Heiss et  
103 al., 2005; Thum et al., 2007; Hao Xia et al., 2012). These CPCs, defined as CD34<sup>+</sup> progenitors, offer regenerative benefit  
104 to the vascular endothelium, by taking part in endothelial repair by paracrine means (Landers-Ramos et al., 2015). Studies  
105 have demonstrated that individuals with lower resting number of these cells are at a greater risk of cardiovascular and all-  
106 cause mortality (Patel et al., 2015; Muggeridge et al., 2021), therefore, increasing CPC number and function may be of  
107 clinical significance.

108 Exercise acutely mobilises CPCs into the peripheral blood compartment in the recovery period post-exercise (van  
109 Craenenbroeck et al., 2008; Ross et al., 2014) and is intensity- and duration-dependent (Laufs et al., 2005). This is thought  
110 to be due to mobilisation from bone marrow, promoting CPC migration from the bone marrow niche, and into circulation,  
111 where these cells exert their vaso-reparative function. Interestingly, the extent to which CPCs are increased in response to  
112 an exercise stressor is associated with future cardiovascular (CV) risk in CVD patients (Moazzami et al., 2020), with a  
113 blunted response associated with increased risk of adverse events. Previous work has also demonstrated older adults display  
114 attenuated CPC response to submaximal exercise compared to younger individuals (Ross et al., 2018), therefore  
115 interventions may be required to not only promote the resting number of CPCs, but also the exercise-responsiveness, which  
116 may be related to bone marrow resident number, and capillarity of the bone marrow to allow for more CPCs to enter the  
117 circulation.

118 Sprint interval training (SIT) is a novel, time-efficient, mode of exercise which is known to promote markers of  
119 cardiometabolic health, such as aerobic capacity (Gillen et al., 2016; Martin-Smith et al., 2019; Yasar et al., 2021), leanness  
120 (Hazell et al., 2014; Naves et al., 2018), and lowered fasting blood glucose (Adams, 2013). One study has shown that SIT  
121 in young, healthy women was effective at increasing CD34<sup>+</sup> CPC resting number, but not function (Harris et al., 2014).  
122 Therefore, SIT may be an effective intervention for promoting changes in CPC counts in older adults who demonstrate  
123 lower resting numbers, which may subsequently improve vascular repair capacity, and reduce future CVD risk. However,  
124 one difficulty is discerning the effect of age specifically on CPCs (or any physiological parameter) is the age-associated  
125 reduction in physical activity (Milanović et al., 2013; Takagi et al., 2015; Trombetti et al., 2015). As such, it is important  
126 to differentiate the effect of age, rather than age *in addition* to years of reduced physical activity on physiological  
127 parameters, and in this case CPCs. In this context, we believe it important to match participants for fitness or physical  
128 activity to truly examine the effect of age on CPCs.

129 The present investigation aimed to examine the effect of age on resting and exercise-induced changes in CPCs in aerobically  
130 trained young and older individuals. A secondary aim was to examine the effect of a novel SIT stimuli in the older group  
131 on CPCs (both basal, and exercise-induced changes). It was hypothesised *a priori* that older adults would display a lower  
132 number of resting CPCs, an attenuated CPC rise in response to a maximal exercise stressor, and that an 8-week SIT protocol  
133 would recover resting and exercise-induced changes in CPCs to that similar of the younger cohort.

134

135

## 136 2 MATERIALS AND METHODS

### 137 2.1 Participants

138 Two cohorts were recruited for this study, younger ( $n = 12$ ,  $28 \pm 5$  years of age, body mass index [BMI]:  $24.5 \pm 2.2$  kg·m<sup>2</sup>)  
139 and older ( $n = 9$ ,  $67 \pm 3$  years of age, BMI:  $22.5 \pm 2.0$  kg·m<sup>2</sup>) adults, who regularly participated in a weekly minimum of  
140 150 min·wk<sup>-1</sup> of moderate or high intensity exercise for at least 6 months prior to participating in the study and continued  
141 habitual physical activity for the duration of the study. The older females in the study were post-menopausal. Participants  
142 were free of exercise contraindicating disease (metabolic, cardiovascular, and renal) or injury as determined by a Physical  
143 Activity Readiness Questionnaire (PAR-Q) and American College of Sports Medicine (ACSM) pre-exercise participation  
144 screening, without any requests for medical clearance submitted within the cohort (Riebe et al., 2015). This study was  
145 carried out in accordance with the Declaration of Helsinki and approved by the University of Cumbria Research Ethics  
146 Committee. Written informed consent was obtained from all participants prior to study commencement and subjects were  
147 excluded if they presented with atrial fibrillation. Descriptive statistics for participants are shown in **Table 1**, and further

148 described in the results section. Participants attended all sessions with exercise suitable clothing and footwear. The younger  
 149 cohort attended a single test session whilst the older cohort attended two separate testing sessions; before (pre) and five  
 150 days after the final training session of the 8-week SIT intervention (post) (Fig 1). Participants were fasted overnight before  
 151 all testing sessions, breaking their fast only after the testing session. As this study was a secondary analysis (primary  
 152 outcome: muscle power), no *a priori* power calculation was performed specific to CPCs.

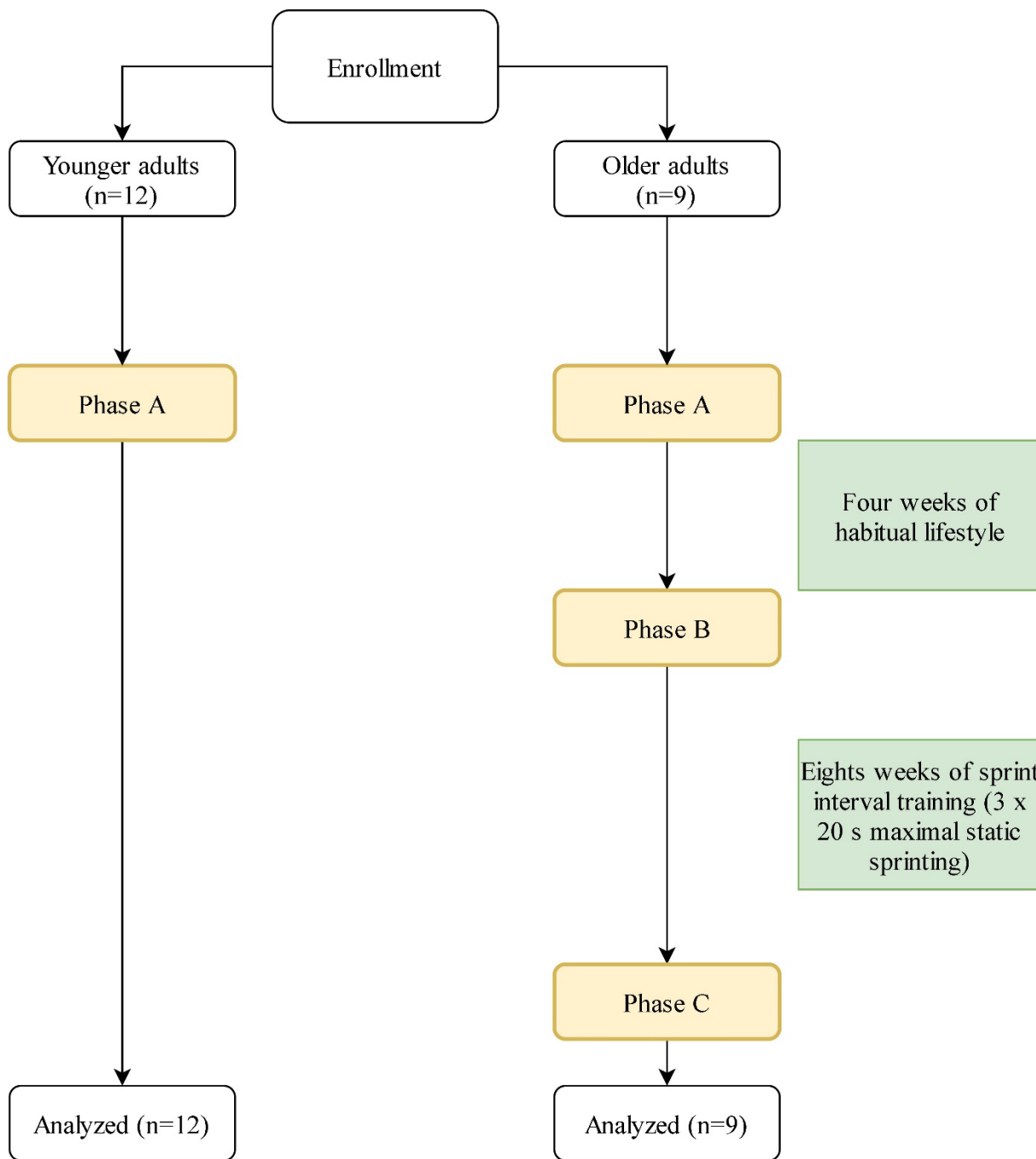
153

154 **Table 1.** Participant characteristics with t-test alpha values for baseline comparisons between young and older participants,  
 155 and pre- to post-sprint interval training comparisons.

|  | Young       | Older pre-SIT | Older post-SIT | Young vs Older pre-SIT | Older pre-SIT vs post-SIT |
|--|-------------|---------------|----------------|------------------------|---------------------------|
| <b>Age (years)</b>   | 28 ± 5      | 67 ± 3        |                |                        |                           |
| <b>Sex (% female)</b>  | 8%          | 22%           |                |                        |                           |
| <b>Height (cm)</b>   | 179 ± 7     | 174 ± 11      |                |                        |                           |
| <b>Body Mass (kg)</b>  | 78.5 ± 7.6  | 68.3 ± 10.4   | 67.9 ± 9.1     | p = 0.008              | p = 0.082                 |
| <b>BMI (kg·m<sup>2</sup>)</b>                                | 24.4 ± 2.2  | 22.5 ± 2.0    | 22.4 ± 1.7     | p = 0.052              | p = 0.107                 |
| <b>Systolic Blood Pressure (mmHg)</b>                        | 123 ± 7     | 125 ± 13      | 125 ± 16       | p = 0.299              | p = 0.465                 |
| <b>Diastolic Blood Pressure (mmHg)</b>                       | 72 ± 7      | 73 ± 6        | 72 ± 6         | p = 0.286              | p = 0.085                 |
| <b>Mean Arterial Pressure (mmHg)</b>                         | 89 ± 6      | 91 ± 7        | 89 ± 7         | p = 0.246              | p = 0.299                 |
| <b><math>\dot{V}O_{2max}</math> (ml·kg·min<sup>-1</sup>)</b> | 51.6 ± 12.6 | 37.4 ± 7.6    | 39.5 ± 8.7     | p = 0.003              | p = 0.113                 |

156 Values shown are mean ± SD. BMI=Body Mass Index,  $\dot{V}O_{2max}$ =Maximum Oxygen Uptake.

157



158

159 **Fig 1** Schematic representation of the methodological flow. PPO = peak power output.  $\dot{V}O_{2max}$  = maximal oxygen uptake.

160

161 **2.2 Blood draws and analysis**

162 Participants arrived at the exercise physiology laboratory between 08.00–11.00 h, following an overnight fast and having  
 163 abstained from strenuous physical activity for a minimum of 48 h. Participants were reminded to maintain standardised  
 164 conditions prior to each assessment point which included arriving in a hydrated state having abstained from caffeine and  
 165 alcohol consumption for 24 h. Following 20 min supine rest, blood was sampled from the antecubital vein using standard  
 166 venepuncture method into sterile TransFix® K3EDTA vacutainer tubes (TransFix, Cytomark Ltd, UK). These tubes  
 167 contained Tranfix® solution which preserved cell antigens on mononuclear cell subsets for delayed flow cytometric  
 168 analysis. The use of this preserving solution for progenitor cell analysis has been validated for flow cytometric analysis of

169 samples for up to 7 days post-collection (Hoymans et al., 2012). Blood samples were collected at the same time of day for  
 170 each participant to control for biological variation and minimise within-participant variation (Hayes et al., 2014). Resting  
 171 blood draws were completed prior to any exercise testing.

172

### 173 **2.3 Anthropometry**

174 Height was measured to the nearest 0.1 cm, and mass to the nearest 0.01 kg using a Seca 286 measuring station  
 175 (Birmingham, UK), from which body mass index (BMI) was derived by dividing mass by the square of height ( $\text{kg}\cdot\text{m}^2$ ).

176

### 177 **2.4 Peak power output (PPO)**

178 PPO was established using the 6 s Herbert test (Herbert et al., 2015) on an air-braked cycle ergometer (Wattbike Ltd.,  
 179 Nottingham, UK), which consisted of a maximal 6 s sprint from a standing start.

180

### 181 **2.5 Maximal oxygen uptake ( $\dot{V}O_{2\text{max}}$ )**

182 At least five min after PPO determination,  $\dot{V}O_{2\text{max}}$  was determined using a Cortex II Metalyser 3B-R2 (Cortex, Biophysik,  
 183 Leipzig, Germany). Expiratory airflow was achieved using a volume transducer (Triple V® turbine, digital) connected to  
 184 an oxygen ( $\text{O}_2$ ) analyser. Expired gases were analysed for  $\text{O}_2$  with electrochemical cells and for carbon dioxide ( $\text{CO}_2$ )  
 185 output with an infrared analyser. The Metalyser was calibrated according to manufacturer's guidelines prior to each test.  
 186 After a 60 min warm-up period, the  $\text{O}_2$  and  $\text{CO}_2$  sensors were calibrated against environmental air in addition to reference  
 187 gas of known composition (5%  $\text{CO}_2$ , 15%  $\text{O}_2$ , and 80%  $\text{N}_2$ ) with volume calibrated by five inspiratory and expiratory  
 188 strokes using a 3 L pump. Prior to determination of  $\dot{V}O_{2\text{max}}$ , a chest strap heart rate monitor was attached to participants'  
 189 chests, with heart rate measured continuously throughout the test (Polar F1, Polar, Finland). The cycle ergometer (Wattbike  
 190 Pro, Wattbike, UK) was adjusted to manufacturer's guidance. Saddle height was adjusted relative to the crank position and  
 191 the foot was secured to a pedal with straps with participants' knee at almost full extension ( $\sim 170^\circ$ ). Participants mounted  
 192 the cycle ergometer, and a rubber face mask was fitted (Hans Rudolph Inc, USA), which was attached to the Cortex II  
 193 Metalyser 3B-R2.  $\dot{V}O_2$  and  $\dot{V}CO_2$  were recorded continuously throughout the test.

194 Prior to the graded exercise test to exhaustion, participants completed a 3 min warm-up at an intensity equivalent to  $\sim 10\%$   
 195 of PPO. Subsequently, participants cycled at increasing intensity with  $25 \text{ W}\cdot\text{min}^{-1}$  increments until they reached volitional  
 196 exhaustion, with rating of perceived exertion (RPE; 0-10 scale) (Foster et al., 2001) recorded in the last 10 s of each stage.  
 197 Immediately following volitional exhaustion, participants had their index finger cleaned using a disinfectant wipe, and then  
 198 a lancet lacerated a fingertip to obtain a blood sample for to measure blood lactate concentration [BLa] (Lactate Pro 2,  
 199 Arkray, Japan).  $\dot{V}O_{2\text{max}}$  was confirmed when participants achieved a minimum of any four of the following criteria;  $\dot{V}O_2$   
 200 plateau,  $\text{RER} \geq 1.10$ , peak heart rate within 10 beats of age predicted maximum,  $[\text{BLa}] \geq 8 \text{ mmol}\cdot\text{L}^{-1}$ , and final RPE of  $\geq 9$ .

201

### 202 **2.6 Flow cytometry**

203 Flow cytometric analyses were performed on Tranfix® (Cytomark Ltd, UK) within 7 days post-blood sample collection.  
 204 Briefly,  $100 \mu\text{L}$  of whole blood was incubated with fluorescent antibodies against known cell surface antigens for  
 205 determining CPCs. These included anti-CD34 BV650, anti-CD45 BV786, and anti-KDR PE (BD Biosciences, USA). 7-  
 206 AAD (BD Biosciences, USA) staining was also performed to remove non-viable cells from analysis. After 45 min  
 207 incubation, erythrocyte lysis was performed using lysis buffer (BD FACS™ Lysing Solution, BD Biosciences, USA).  
 208 Quantification of CPC counts was then performed on a 12-colour flow cytometer (BD FACS Celesta, BD Biosciences,  
 209 USA).  $500,000 \text{ CD45}^+$  events were collected for each sample to ensure sufficient data for rare cell populations. After gating  
 210 for  $\text{CD45}^+$  events, non-viable 7AAD<sup>+</sup> events were excluded, with subsequent gating for  $\text{CD34}^+$  events, and lastly for  $\text{KDR}^+$   
 211 events. Appropriate negative tubes were used to determine positive and negative events for each targeted antibody.  
 212 Percentage events were collected as % mononuclear events, in addition to calculation of  $\text{cells}\cdot\text{mL}^{-1}$  using dual platform  
 213 analysis. To do so, lymphocytes were enumerated using differential hematology analysis (XS1000i, Sysmex, UK) and %

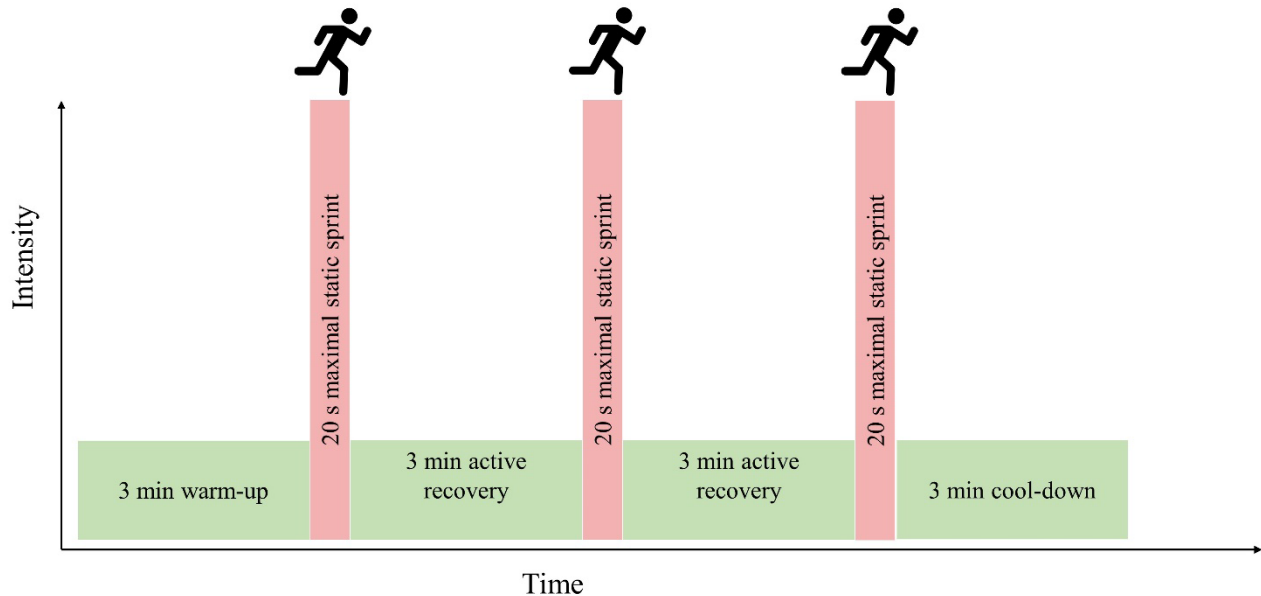
214 of lymphocyte events were used with lymphocyte number to determine CPCs as cells·mL<sup>-1</sup>. Analyses of flow cytometric  
215 data were performed using BD FACSDiva™ software (BD Biosciences, USA). Gating parameters can be found in  
216 supplementary figure 1.

217 For pre- to post-exercise comparisons, changes in blood volume due to hemoconcentration were accounted for using  
218 measured hematocrit and hemoglobin obtained from automated hematology analysis using equations by Dill and Costill  
219 (1974).

220

## 221 2.7 Exercise training

222 In the present study the older adults underwent an 8-week SIT intervention involving 3 x 20 s ‘all-out’ sprints, twice per  
223 week. The two SIT sessions per week were ≥, 72 h apart, as our pilot work suggested older adults would be suitably  
224 recovered from SIT in this timeframe (Yasar et al., 2019). Participants avoided strenuous physical activity 24 h prior to SIT  
225 sessions whilst maintaining habitual physical activity according to self-reporting. Participants warmed up for a period of 3  
226 min at a self-paced intensity by performing static running. Participants then performed three 20 s static sprints at an ‘all-  
227 out’ intensity, interspersed by 3 min self-paced recovery phases. Following the final sprint, a 3 min self-paced cool down  
228 was performed (**Fig 2**). During all sprints, participants were instructed to raise their feet to approximately knee height, with  
229 loud verbal encouragement throughout each sprint. No dietary guidance or monitoring was provided on during the training,  
230 excepting for the fasted testing sessions.



231

232 **Fig 2** Schematic representation of the sprint interval session. Participants performed this session twice weekly for eight  
233 weeks

234

## 235 2.8 Statistical Analysis

236 All data were assessed for normal distribution using the Kolmogorov-Smirnov test for normality. All data were normally  
237 distributed. To assess the differences in resting and exercise-induced changes in CD34<sup>+</sup> and CD34<sup>+</sup>KDR<sup>+</sup> CPCs between  
238 young and older adults, 2 x 2 mixed factorial analyses of variance (ANOVA) were performed with Tukey's multiple  
239 comparison post-hoc tests performed where necessary. Resting CPC counts were compared as both % MNCs and as  
240 cell·mL<sup>-1</sup>, whereas exercise-induced changes (pre- to post-exercise) were compared for main effects of exercise, age, and  
241 intervention were compared as cells·mL<sup>-1</sup>. The delta ( $\Delta$ ) change in cells·mL<sup>-1</sup> were compared between young and older



242 adults by means of independent t-test. To compare the effect of the SIT intervention in the older adults, a mixed effects  
 243 model was performed to compare resting and exercise-induced CPCs between pre- and post-SIT, and between these data  
 244 with the young cohort. Data were analysed using GraphPad Prism (GraphPad Prism 9.1.0, GraphPad Software Inc, USA).  
 245 Data are presented as mean  $\pm$  SD (95% confidence intervals [CI]) without subjective terminology and alpha levels are  
 246 reported as exact P values, without dichotomous interpretation of 'significant' or 'non-significant' as advised by the  
 247 American Statistical Association (Hurlbert et al., 2019). Effect sizes are reported using Cohen's  $d$  (difference in means  $\div$   
 248 pooled standard deviation [SD]), and interpreted using guidelines for gerontology (Brydges, 2019), which are  $d \geq 0.15 =$   
 249 small,  $d \geq 0.40 =$  moderate, and  $d \geq 0.75 =$  large.

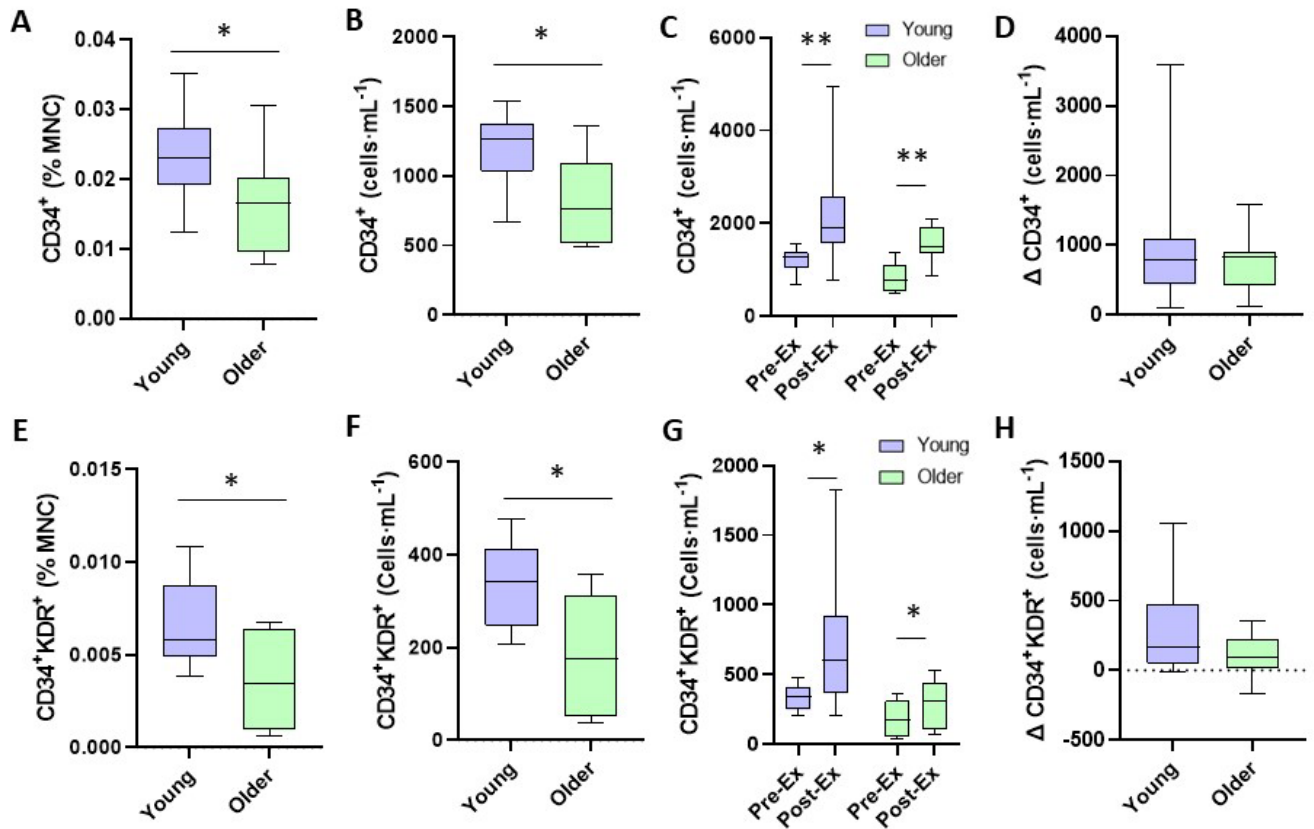
250

## 251 3 RESULTS

### 252 3.1 Influence of age on resting and exercise-induced changes in CPC counts

253 Older and younger adults circulating number of CD34<sup>+</sup> CPCs as a percentage of MNCs were  $0.0159 \pm 0.0073\%$  [0.0103-  
 254 0.0216% 95% CI] and  $0.0233 \pm 0.0060\%$  [0.0195-0.0271% 95% CI] respectively (old vs young;  $p = 0.026$ ,  $d = 1.10$ ). Older  
 255 and younger adults circulating number of CD34<sup>+</sup> CPCs were  $828 \pm 314$  [587-1070 95% CI] cells·mL<sup>-1</sup> and  $1186 \pm 272$   
 256 [1012-1359 95% CI] cells·mL<sup>-1</sup> respectively (old vs young;  $p = 0.015$ ,  $d = 1.22$ ). Older and younger adults circulating  
 257 CD34<sup>+</sup>KDR<sup>+</sup> EPCs as a percentage of MNCs were  $0.0034 \pm 0.0026\%$  [0.0014-0.0054% 95% CI] and  $0.067 \pm 0.023\%$   
 258 [0.0052-0.0082% 95% CI] of MNCs respectively (old vs young;  $p = 0.008$ ,  $d = 2.59$ ). Older and younger adults' number of  
 259 circulating CD34<sup>+</sup>KDR<sup>+</sup> EPCs were  $177 \pm 128$  [79-275 95% CI] cells·mL<sup>-1</sup> and  $335 \pm 92$  [227-394 95% CI] cells·mL<sup>-1</sup>  
 260 respectively (old vs young;  $p = 0.007$ ,  $d = 1.42$ ; **Fig 3**).

261 The number of CD34<sup>+</sup> progenitor cells in older adults before and after the graded exercise test to exhaustion were  $828 \pm$   
 262  $314$  [587-1070 95% CI] cells·mL<sup>-1</sup> and  $1582 \pm 381$  [1290-1878 95% CI] cells·mL<sup>-1</sup> respectively (pre- to post-exercise;  $p <$   
 263  $0.001$ ,  $d = 2.16$ ). The number of CD34<sup>+</sup> progenitor cells in the young adults before and after the graded exercise test to  
 264 exhaustion were  $1186 \pm 272$  [1012-1359 95% CI] cells·mL<sup>-1</sup> and  $2134 \pm 1049$  [1467-2800 95% CI] cells·mL<sup>-1</sup> respectively  
 265 (pre- to post-exercise;  $p = 0.004$ ,  $d = 1.23$ ). CD34<sup>+</sup>KDR<sup>+</sup> EPCs in the older adults before and after the graded exercise test  
 266 to exhaustion were  $177 \pm 128$  [79-275 95% CI] cells·mL<sup>-1</sup> and  $280 \pm 176$  [145-416 95% CI] cells·mL<sup>-1</sup> respectively (pre-  
 267 to post-exercise;  $p = 0.008$ ,  $d = 0.67$ ). CD34<sup>+</sup>KDR<sup>+</sup> EPCs in the young adults before and after the graded exercise test to  
 268 exhaustion were  $225 \pm 92$  [277-394 95% CI] cells·mL<sup>-1</sup> and  $717 \pm 493$  [403-1030 95% CI] cells·mL<sup>-1</sup> respectively (pre- to  
 269 post-exercise;  $p = 0.017$ ,  $d = 1.39$ ). The older cohort's  $\Delta$ CD34<sup>+</sup> from pre- to post-graded exercise test to exhaustion was  
 270  $754 \pm 430$  [424-1084 95% CI] cells·mL<sup>-1</sup>, whilst the young cohort's  $\Delta$ CD34<sup>+</sup> from pre- to post-graded exercise test to  
 271 exhaustion was  $948 \pm 907$  [372-1524 95% CI] cells·mL<sup>-1</sup> (old vs young;  $p = 0.775$ ,  $d = 0.27$ ). The older cohort's  
 272  $\Delta$ CD34<sup>+</sup>KDR<sup>+</sup> CPCs from pre- to post-graded exercise test to exhaustion was  $103 \pm 157$  [-18-224 95% CI] cells·mL<sup>-1</sup>,  
 273 whilst the young cohort's  $\Delta$  CD34<sup>+</sup>KDR<sup>+</sup> CPCs from pre- to post-graded exercise test to exhaustion was  $299 \pm 365$  [66-531  
 274 95% CI] cells·mL<sup>-1</sup> (old vs young;  $p = 0.212$ ,  $d = 0.70$ ).



275

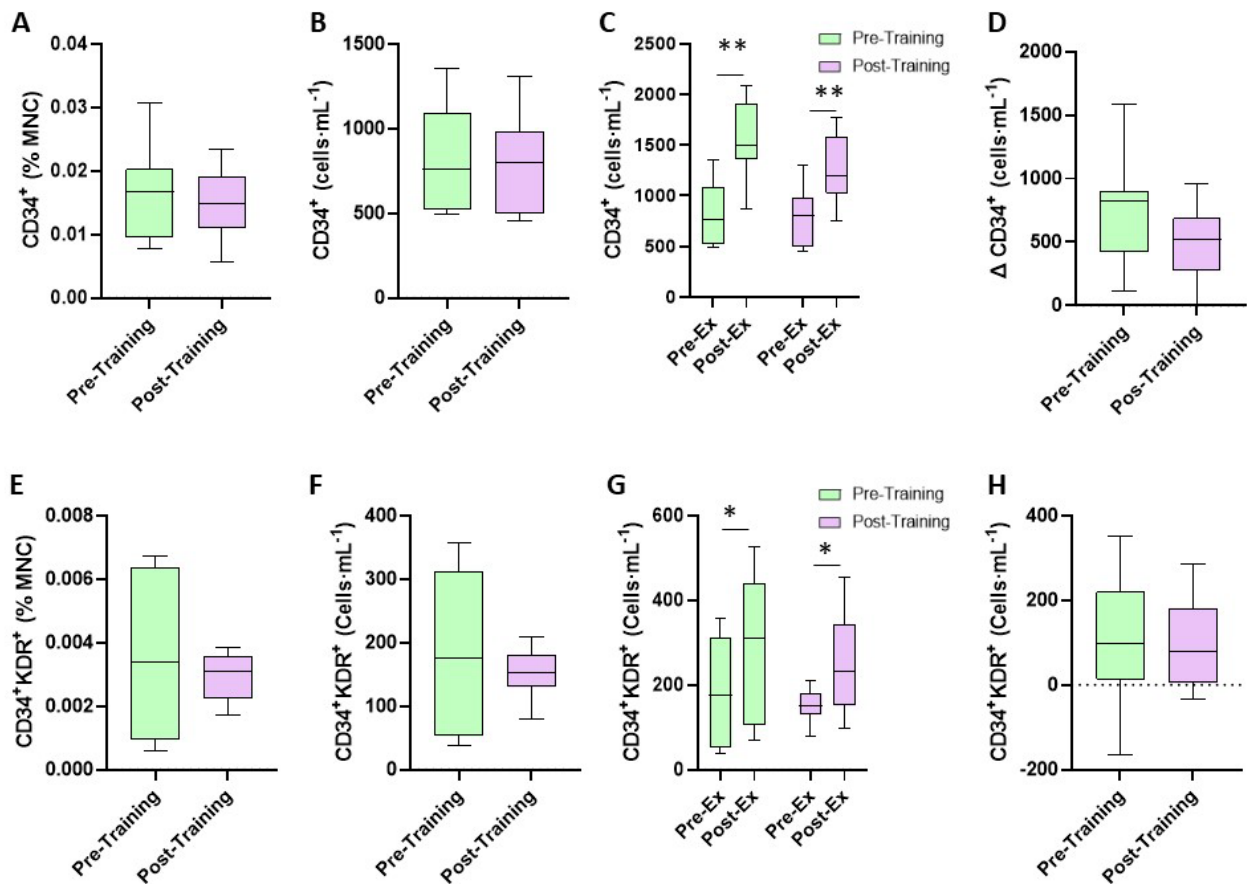
276 **Fig 3** CD34<sup>+</sup> and CD34<sup>+</sup>KDR<sup>+</sup> CPC Resting and Exercise-Induced Changes in CPC Counts in Young (n=12) and Older  
 277 (n=9) Trained Adults. *A, B and E, F display differences between young and older adults in CD34<sup>+</sup> (A: % MNC, B: cells·mL<sup>-1</sup>),*  
 278 *CD34<sup>+</sup>KDR<sup>+</sup> (E: % MNC, F: cells·mL<sup>-1</sup>).* *C, D and G, H display changes in CPCs from pre- to post-exercise between*  
 279 *young and older adults (C: CD34<sup>+</sup> changes from pre- to post-exercise, D: Δ change in CD34<sup>+</sup> CPCs; G: CD34<sup>+</sup>KDR<sup>+</sup>*  
 280 *changes from pre- to post-exercise, H: Δ change in CD34<sup>+</sup>KDR<sup>+</sup> CPCs).* \* *p* < 0.05, \*\* *p* < 0.005

281

### 282 3.2 Effect of 8-weeks of sprint interval training on resting and exercise-induced CPC changes in trained older 283 adults

284 In terms of basal concentrations in the older group, CD34<sup>+</sup> CPC as a percentage of MNCs was 0.0159 ± 0.0073% MNC  
 285 [0.0103-0.0216% 95% CI] and 0.0148 ± 0.0055% MNC [0.0106-0.0190% 95% CI] pre and post training respectively (*p* =  
 286 0.694, *d* = 0.17). CD34<sup>+</sup> CPC in cells·mL<sup>-1</sup> was 828 ± 314 [587-1070 cells·mL<sup>-1</sup> 95% CI] and 765 ± 299 cells·mL<sup>-1</sup> [535-  
 287 995 cells·mL<sup>-1</sup> 95% CI] at pre and post training respectively (*p* = 0.602, *d* = 0.20). CD34<sup>+</sup>KDR<sup>+</sup> CPC as a percentage of  
 288 MNCs pre and post training was 0.0034 ± 0.0026% MNC [0.0014-0.0054% 95% CI] and 0.0030 ± 0.0008 % MNC [0.0024-  
 289 0.0036% 95% CI] (*p* = 0.568, *d* = 0.21). In cells·mL<sup>-1</sup> this equated to 177 ± 128 [79-275 cells·mL<sup>-1</sup> 95% CI] and 153 ± 38  
 290 cells·mL<sup>-1</sup> [123-182 cells·mL<sup>-1</sup> 95% CI] pre and post training respectively (*p* = 0.545, *d* = 0.25).

291 In terms of graded exercise test to exhaustion-induced changes in CD34<sup>+</sup> or CD34<sup>+</sup>KDR<sup>+</sup> CPCs following SIT, the ANOVA  
 292 resulted in an exercise (i.e., pre- to post-graded exercise test to exhaustion) x phase (i.e., pre and post) interaction of *p* =  
 293 0.233 for CD34<sup>+</sup> CPCs and *p* = 0.921 for CD34<sup>+</sup>KDR<sup>+</sup> CPCs. The graded exercise test to exhaustion post-SIT resulted in  
 294 CD34<sup>+</sup> CPCs of 765 ± 299 [535-995 95% CI] cells·mL<sup>-1</sup> and 1266 ± 337 [1006-1525 95% CI] cells·mL<sup>-1</sup> (pre- to post-  
 295 exercise; *p* < 0.001, *d* = 1.57) and CD34<sup>+</sup>KDR<sup>+</sup> CPCs of 153 ± 38 [123-182 95% CI] cells·mL<sup>-1</sup> and 249 ± 121 [156-342  
 296 95% CI] cells·mL<sup>-1</sup> (pre- to post-exercise; *p* = 0.035, *d* = 1.07) and the mean response was not different to that of pre-  
 297 intervention, however there was a smaller spread of data, suggesting a more uniform response (**Fig 4**).



298

299 **Fig 4** CD34<sup>+</sup> and CD34<sup>+</sup>KDR<sup>+</sup> CPC Resting and Exercise-Induced Changes in CPC Counts in Older (n=9) Trained Adults  
 300 before and after 8-Week SIT Intervention. A, B and E, F display differences between pre- and post-intervention in CD34<sup>+</sup>  
 301 (A: % MNC, B: cells·mL<sup>-1</sup>), CD34<sup>+</sup>KDR<sup>+</sup> (E: % MNC, F: cells·mL<sup>-1</sup>). C, D and G, H display exercise-induced changes in  
 302 CPCs from pre- to post-SIT intervention (C: CD34<sup>+</sup> changes from pre- to post-exercise, D: Δ change in CD34<sup>+</sup> CPCs; G:  
 303 CD34<sup>+</sup>KDR<sup>+</sup> changes from pre- to post-exercise, H: Δ change in CD34<sup>+</sup>KDR<sup>+</sup> CPCs). \* p < 0.05, \*\* p < 0.005.

304

#### 305 4 DISCUSSION

306 The main findings of this study are that aerobically trained older adults display a reduced resting number of CPCs compared  
 307 to younger trained adults but have a preserved ability to mobilise these cells in response to a graded exercise test to  
 308 exhaustion. Moreover, 8 weeks of SIT did not increase basal CPC counts in already well-trained older adults.

309 Previous work has shown that advancing age is associated with lower CPC counts (Thijssen et al., 2006; Ross et al., 2018)  
 310 which is apparently unaffected by cardiorespiratory fitness (Ross et al., 2018). These cells play an important role in vascular  
 311 repair, via promoting endothelial proliferation by paracrine means (Hur et al., 2004) or by differentiating into mature  
 312 endothelial cells at the site of repair (Xia et al., 2012). Studies report that such CPCs are associated with endothelial function  
 313 (Hill et al., 2003; Bruyndonckx et al., 2014) and as such, promote endothelial integrity and health. The loss of such cells  
 314 with ageing therefore results in reduced endothelial repair, and loss of endothelial function, which is itself linked heavily  
 315 with future cardiovascular risk (Green et al., 2011). The mechanism for such reduction in CPCs with advancing age in  
 316 humans is unknown but purported to be due to increases in oxidative stress, resulting in impairments in CPC number and/or  
 317 function (Mandraffino et al., 2012), and increased CPC susceptibility to apoptotic stimuli (Kushner et al., 2011). There is  
 318 no evidence for changes in bone marrow resident progenitor cell count with ageing (Povsic et al., 2010), but a stressor-  
 319 induced CPC mobilisation from bone marrow may be impaired, with evidence from burn wound model of CPC mobilisation  
 320 (Zhang et al., 2011) and exercise-induced mobilisation both displaying impaired mobilisation in older populations (Ross et  
 321 al., 2018). However, the present investigation observed a preserved exercise mobilisation of CPCs in older adults. There

322 are several key differences which are likely to explain divergent findings. Firstly, participants in this study were a very  
323 physically active, trained group of older adults, evidenced by their  $\dot{V}O_{2\max}$  of 37.4 ml·kg<sup>-1</sup>·min<sup>-1</sup>. Previous work by Ross and  
324 colleagues (2018) which demonstrated impaired mobilisation following exercise in older adults included participants who  
325 were not highly physically active, and therefore the observed reduction in exercise induced-CPC mobilisation may not be  
326 a result of age *per se*, but a result of inactive ageing. Thus, high levels of physical activity throughout the lifespan may be  
327 required to preserve this process. In addition to divergent participant characteristics, the exercise stimuli in the work of  
328 Ross et al. (2018) study was a submaximal cycling protocol at 70%  $\dot{V}O_{2\max}$ , whereas the stressor in the present investigation  
329 was a maximal graded exercise test to exhaustion, and CPC mobilisation is intensity dependent (Laufs et al., 2005).

330 Exercise training has shown promise to promote CPC number and function in both healthy (Tsai et al., 2016; Niemi et al.,  
331 2018) and diseased states (Adams et al., 2004; Steiner et al., 2005; Sarto et al., 2007; Schlager et al., 2011; Gatta et al.,  
332 2012; Cesari et al., 2013). However, some studies report no changes in CPC counts after a short-term training programme  
333 (Luk et al., 2012; van Craenenbroeck et al., 2015), likely due to high intra- and inter-group variation associated with  
334 quantifying rare cells by flow cytometry. In the present study we aimed to investigate whether a short-term novel, time  
335 efficient SIT programme could improve the age-related reduction in resting CPC count, and therefore the trained older  
336 adults underwent an 8-week SIT intervention (3 x 20s 'all-out' sprints, 2 x a week). Although SIT has not been well-  
337 researched in older adults, HIIT in older adults has been observed to improve cardiorespiratory fitness (Knowles et al.,  
338 2015; StØren et al., 2017), muscle power (Herbert et al., 2017; Sculthorpe et al., 2017), and is facilitative in improving  
339 body composition (Herbert et al., 2016). Whilst SIT in younger demographics has been observed to improve both aerobic  
340 (Sloth et al., 2013; Vollaard et al., 2017) and anaerobic (MacDougall et al., 1998; Kim et al., 2011) fitness with a  
341 considerable variation of approaches pertaining to interval duration, repetition, and training frequency being evidenced as  
342 efficacious, whilst remaining easy to administer i.e., no power or heart monitors required. We observed no change in either  
343 resting, or exercise-induced changes in CPCs in response to the SIT intervention. We propose that the highly trained status  
344 of the older adults was responsible for this, in that the ceiling effect was likely evident in this well-trained group. As such,  
345 whether SIT would be beneficial in a sedentary older adult group warrants investigation.

#### 346 347 4.1 Limitations

348 There are several limitations of the current study, which we accept. Firstly, addition of a sedentary older group and sedentary  
349 younger group to assess the influence of sedentary ageing vs active ageing vs sedentary youth vs active youth more  
350 comprehensively would have been beneficial. This would permit us to determine whether the effect of SIT was greater in  
351 a physically inactive group, as our older trained group had a CPCs mobilisation capability similar to a young, trained group,  
352 contrary to our previous work (Ross et al., 2018). However, additional recruitment would require greater resource  
353 commitment which was outside the scope of the present investigation. Secondly, whole body metabolism is largely  
354 dependent on skeletal muscle mass, as increased skeletal muscle mass increases metabolic load during rest and exercise, if  
355 all other factors are equal. Moreover, as muscle mass ageing and gender have meaningful effects on the physiological  
356 stimulus that can be achieved by exercise, mostly attributable to differences in muscle mass between old vs young, and  
357 male vs female participants (Janssen & Ross, 1993). It is likely older female participants in this study were less muscular  
358 than their younger, male counterparts, resulting in a relative dampening of the relation between exercise intensity and  
359 metabolic stress (Miller et al., 1993). Admittedly, this increased risk of bias in the study results, and consequently, any  
360 conclusions derived. Thirdly, we did not assess CPC paracrine function, which improves post-training (Landers-Ramos et  
361 al., 2015), and therefore this may be an avenue for future research. Finally, and importantly, this study was not powered to  
362 detect changes in CPCs and was secondary analysis of an investigation with the primary outcome as muscle power. We  
363 believe this justifies our statistical approach of avoidance of dichotomous 'significance' or otherwise labelling based on an  
364 alpha level inappropriate for this dataset. An *a posteriori* power calculation testing for differences between the young and  
365 old group at baseline using CD34+ CPCs (in cells·mL<sup>-1</sup>) as the outcome variable, an alpha of 0.05, a one-sided test, and a  
366 sample size of nine, resulted in statistical power of 0.83. Similarly, when using the same information and determining  
367 sample size, the required *n* was 10 per group. However, to detect a SIT-induced change in graded exercise test  $\Delta$ CD34+ (in  
368 cells·mL<sup>-1</sup>), a sample size of *n* = 36 would have been required to detect a change at the *p* = 0.05 level, with a statistical  
369 power of 0.80 and a one-sided test. Thus, a larger confirmatory study is required to corroborate observations made here.

#### 370 371 4.2 Conclusions

372 Physically trained older adults display reduced CPC counts, but preserved exercise-induced mobilisation of these cells,  
 373 which could offer vasoprotection. However, an 8-week SIT intervention was unsuccessful at improving resting CPCs, and  
 374 exercise-induced mobilisation of these cells.

375

## 376 AUTHOR CONTRIBUTIONS ACCORDING TO THE CREDIT TAXONOMY

377 Conceptualisation: Zerbu Yasar, Mark D Ross, Lawrence D Hayes; Methodology: Zerbu Yasar, Mark D Ross, Lawrence  
 378 D Hayes; Formal analysis and investigation: Zerbu Yasar, Mark D Ross, Russell Wilson, Lawrence D Hayes; Investigation:  
 379 Zerbu Yasar, Mark D Ross, Ruth D Postlethwaite, Christopher J Gaffney, Lawrence D Hayes; Resources: Mark D Ross,  
 380 Lawrence D Hayes; Writing - original draft preparation: Zerbu Yasar, Mark D Ross, Lawrence D Hayes; Writing - review  
 381 and editing: Zerbu Yasar, Mark D Ross, Christopher J Gaffney, Ruth D Postlethwaite, Russell Wilson, Lawrence D Hayes;  
 382 Visualization: Mark D Ross, Lawrence D Hayes; Supervision: Mark D Ross, Lawrence D Hayes; Project administration:  
 383 Zerbu Yasar, Mark D Ross, Lawrence D Hayes; Funding acquisition: Mark D Ross, Lawrence D Hayes.

384

## 385 ACKNOWLEDGMENTS

386 Zerbu Yasar received a PhD scholarship from the University of Cumbria. Lawrence D Hayes received research funding  
 387 from the University of Cumbria for data generation.

388

## 389 CONFLICT OF INTEREST STATEMENT

390 The authors declare that the research was conducted in the absence of any commercial or financial relationships that could  
 391 be construed as a potential conflict of interest.

392

## 393 5 REFERENCES

394 Adams, O.P., 2013. The impact of brief high-intensity exercise on blood glucose levels. *Diabetes Metabolic Syndrome and*  
 395 *Obesity* 6, 113–122. <https://doi.org/10.2147/DMSO.S29222>

396 Adams, V., Lenk, K., Linke, A., Lenz, D., Erbs, S., Sandri, M., et al. (2004). Increase of Circulating Endothelial Progenitor  
 397 Cells in Patients with Coronary Artery Disease after Exercise-Induced Ischemia. *Arteriosclerosis, Thrombosis, and*  
 398 *Vascular Biology* 24, 684–690. doi:10.1161/01.ATV.0000124104.23702.a0.

399 Bruyndonckx, L., Hoymans, V. Y., Frederix, G., de Guchtenaere, A., Franckx, H., Vissers, D. K., et al. (2014). Endothelial  
 400 progenitor cells and endothelial microparticles are independent predictors of endothelial function. *Journal of Pediatrics* 165,  
 401 300–305. doi:10.1016/j.jpeds.2014.04.015.

402 Cesari, F., Marcucci, R., Gori, A. M., Burgisser, C., Francini, S., Sofi, F., et al. (2013). Impact of a cardiac rehabilitation  
 403 program and inflammatory state on endothelial progenitor cells in acute coronary syndrome patients. *International Journal*  
 404 *of Cardiology* 167, 1854–1859. doi:10.1016/j.ijcard.2012.04.157.

405 Dill, D. B., and Costill, D. L. (1974). Calculation of percentage changes in volumes of blood, plasma, and red cells in  
 406 dehydration. *Journal of Applied Physiology* 37, 247–248.

407 Farzad, B., Gharakhanlou, R., Agha-Alinejad, H., Curby, D.G., Bayati, M., Bahraminejad, M., Mäestu, J., 2011.  
 408 Physiological and performance changes from the addition of a sprint interval program to wrestling training. *Journal of*  
 409 *Strength Conditioning Research* 25, 2392–2399. <https://doi.org/10.1519/JSC.0b013e3181fb4a33>.

410 Foster, C., Florhaug, J.A., Franklin, J., Gottschall, L., Hrovatin, L.A., Parker, S., Doleshal, P., Dodge, C., 2001. A new  
 411 approach to monitoring exercise training. *Journal of Strength Conditioning Research* 15, 109–115.

- 412 Gatta, L., Armani, A., Iellamo, F., Consoli, C., Molinari, F., Caminiti, G., et al. (2012). Effects of a short-term exercise  
413 training on serum factors involved in ventricular remodelling in chronic heart failure patients. *International Journal of*  
414 *Cardiology* 155, 409–413. doi:10.1016/j.ijcard.2010.10.045.
- 415 Gillen, J.B., Martin, B.J., MacInnis, M.J., Skelly, L.E., Tarnopolsky, M.A., Gibala, M.J., 2016. Twelve Weeks of Sprint  
416 Interval Training Improves Indices of Cardiometabolic Health Similar to Traditional Endurance Training despite a Five-  
417 Fold Lower Exercise Volume and Time Commitment. *PLoS One* 11, e0154075.  
418 <https://doi.org/10.1371/journal.pone.0154075>
- 419 Gist, N.H., Fedewa, M.V., Dishman, R.K., Cureton, K.J., 2014. Sprint interval training effects on aerobic capacity: a  
420 systematic review and meta-analysis. *Sports Med* 44, 269–279. <https://doi.org/10.1007/s40279-013-0115-0>
- 421 Grace, F., Herbert, P., Elliott, A.D., Richards, J., Beaumont, A., Sculthorpe, N.F., 2018. High intensity interval training  
422 (HIIT) improves resting blood pressure, metabolic (MET) capacity and heart rate reserve without compromising cardiac  
423 function in sedentary aging men. *Exp Gerontol* 109, 75–81. <https://doi.org/10.1016/j.exger.2017.05.010>
- 424 Green, D. J., Jones, H., Thijssen, D., Cable, N. T., and Atkinson, G. (2011). Flow-mediated dilation and cardiovascular  
425 event prediction: Does nitric oxide matter? *Hypertension* 57, 363–369. doi:10.1161/HYPERTENSIONAHA.110.167015.
- 426 Hazell, T.J., Hamilton, C.D., Olver, T.D., Lemon, P.W.R., 2014. Running sprint interval training induces fat loss in women.  
427 *Applied Physiology, Nutrition, and Metabolism* 39, 944–950. <https://doi.org/10.1139/apnm-2013-0503>
- 428 Herbert, P., Hayes, L.D., Sculthorpe, N.F., Grace, F.M., 2017. HIIT produces increases in muscle power and free  
429 testosterone in male masters athletes. *Endocrinology Connect* 6, 430–436. <https://doi.org/10.1530/EC-17-0159>
- 430 Herbert, Peter, Hayes, L.D., Sculthorpe, N., Grace, F.M., 2017. High-intensity interval training (HIIT) increases insulin-  
431 like growth factor-I (IGF-I) in sedentary aging men but not masters' athletes: an observational study. *Aging Male* 20, 54–  
432 59. <https://doi.org/10.1080/13685538.2016.1260108>
- 433 Hill, J. M., Zalos, G., Halcox, J. P. J., Schenke, W. H., Waclawiw, M. A., Quyyumi, A. A., et al. (2003). Circulating  
434 Endothelial Progenitor Cells, Vascular Function, and Cardiovascular Risk. *New England Journal of Medicine* 348, 593–  
435 600. doi:10.1056/NEJMoa022287.
- 436 Hoymans, V. Y., van Craenenbroeck, A. H., Bruyndonckx, L., van Ierssel, S. H., Vrints, C. J., Conraads, V. M., et al.  
437 (2012). TransFix® for delayed flow cytometry of endothelial progenitor cells and angiogenic T cells. *Microvascular*  
438 *Research* 84, 384–386. doi:10.1016/j.mvr.2012.08.007.
- 439 Hur, J., Yoon, C. H., Kim, H. S., Choi, J. H., Kang, H. J., Hwang, K. K., et al. (2004). Characterization of Two Types of  
440 Endothelial Progenitor Cells and Their Different Contributions to Neovasclogenesis. *Arteriosclerosis, Thrombosis, and*  
441 *Vascular Biology* 24, 288–293. doi:10.1161/01.ATV.0000114236.77009.06.
- 442 Hurst, C., Weston, K.L., Weston, M., 2019. The effect of 12 weeks of combined upper- and lower-body high-intensity  
443 interval training on muscular and cardiorespiratory fitness in older adults. *Aging Clinical and Experimental Research* 31,  
444 661–671. <https://doi.org/10.1007/s40520-018-1015-9>
- 445 Janssen, I., Ross, R., 2004. Linking age-related changes in skeletal muscle mass and composition with metabolism and  
446 disease. *The journal of nutrition, health & aging* 9, 408–19.
- 447 Kim, H.-K., Hwang, C.-L., Yoo, J.-K., Hwang, M.-H., Handberg, E.M., Petersen, J.W., Nichols, W.W., Sofianos, S.,  
448 Christou, D.D., 2017. All-Extremity Exercise Training Improves Arterial Stiffness in Older Adults. *Med Sci Sports Exerc*  
449 49, 1404–1411. <https://doi.org/10.1249/MSS.0000000000001229>
- 450 Kim, J., Lee, N., Trilk, J., Kim, E.-J., Kim, S.-Y., Lee, M., Cho, H.-C., 2011. Effects of sprint interval training on elite  
451 Judoists. *Int J Sports Med* 32, 929–934. <https://doi.org/10.1055/s-0031-1283183>
- 452 Knowles, A.-M., Herbert, P., Easton, C., Sculthorpe, N., Grace, F.M., 2015. Impact of low-volume, high-intensity interval  
453 training on maximal aerobic capacity, health-related quality of life and motivation to exercise in ageing men. *Age* 37, 25.  
454 <https://doi.org/10.1007/s11357-015-9763-3>



- 455 Kushner, E. J., MacEneaney, O. J., Weil, B. R., Greiner, J. J., Stauffer, B. L., and Desouza, C. A. (2011). Aging is associated  
456 with a proapoptotic endothelial progenitor cell phenotype. *Journal of Vascular Research* 48, 408–414.  
457 doi:10.1159/000324837.
- 458 Landers-Ramos, R. Q., Sapp, R. M., Jenkins, N. T., Murphy, A. E., Cancre, L., Chin, E. R., et al. (2015). Chronic endurance  
459 exercise affects paracrine action of CD31 and CD34 cells on endothelial tube formation. *American Journal of Physiology: Heart and Circulatory Physiology* 309, 407–420. doi:10.1152/ajpheart.00123.2015.-We.
- 461 Laufs, U., Urhausen, A., Werner, N., Scharhag, J., Heitz, A., Kissner, G., et al. (2005). Running exercise of different  
462 duration and intensity: Effect on endothelial progenitor cells in healthy subjects. *European Journal of Preventive Cardiology*  
463 12, 407–414. doi:10.1097/01.hjr.0000174823.87269.2e.
- 464 Lepretre, P.-M., Vogel, T., Brechat, P.-H., Dufour, S., Richard, R., Kaltenbach, G., Berthel, M., Lonsdorfer, J., 2009. Impact  
465 of short-term aerobic interval training on maximal exercise in sedentary aged subjects. *International Journal of Clinical*  
466 *Practice* 63, 1472–1478. <https://doi.org/10.1111/j.1742-1241.2009.02120.x>
- 467 Luk, T. H., Dai, Y. L., Siu, C. W., Yiu, K. H., Chan, H. T., Lee, S. W., et al. (2012). Effect of exercise training on vascular  
468 endothelial function in patients with stable coronary artery disease: A randomized controlled trial. *European Journal of*  
469 *Preventive Cardiology* 19, 830–839. doi:10.1177/1741826711415679.
- 470 MacDougall, J.D., Hicks, A.L., MacDonald, J.R., McKelvie, R.S., Green, H.J., Smith, K.M., 1998. Muscle performance  
471 and enzymatic adaptations to sprint interval training. *Journal of Applied Physiology* (1985) 84, 2138–2142.  
472 <https://doi.org/10.1152/jappl.1998.84.6.2138>
- 473 Mandraffino, G., Sardo, M. A., Riggio, S., D'Ascola, A., Alibrandi, A., Saitta, C., et al. (2012). Circulating progenitor cells  
474 and the elderly: A seven-year observational study. *Experimental Gerontology* 47, 394–400.  
475 doi:10.1016/j.exger.2012.03.007.
- 476 Martin-Smith, R., Buchan, D.S., Baker, J.S., Macdonald, M.J., Sculthorpe, N.F., Easton, C., Knox, A., Grace, F.M., 2019.  
477 Sprint Interval Training and the School Curriculum: Benefits Upon Cardiorespiratory Fitness, Physical Activity Profiles,  
478 and Cardiometabolic Risk Profiles of Healthy Adolescents. *Pediatric Exercise Science* 31, 296–305.  
479 <https://doi.org/10.1123/pes.2018-0155>
- 480 Miller, A.E.J., MacDougall, J.D., Tarnopolsky, M.A., Sale, D.G., 1993. Gender differences in strength and muscle fiber  
481 characteristics. *Europ. J. Appl. Physiol.* 66, 254–262. <https://doi.org/10.1007/BF00235103>
- 482 Naves, J.P.A., Viana, R.B., Rebelo, A.C.S., de Lira, C.A.B., Pimentel, G.D., Lobo, P.C.B., de Oliveira, J.C., Ramirez-  
483 Campillo, R., Gentil, P., 2018. Effects of High-Intensity Interval Training vs. Sprint Interval Training on Anthropometric  
484 Measures and Cardiorespiratory Fitness in Healthy Young Women. *Frontiers in Physiology* 9, 1738.  
485 <https://doi.org/10.3389/fphys.2018.01738>
- 486 Niemi, G. M., Allen, J. M., Mailing, L. J., Khan, N. A., Holscher, H. D., Woods, J. A., et al. (2018). Effects of endurance  
487 exercise training on inflammatory circulating progenitor cell content in lean and obese adults. *Journal of Physiology* 596,  
488 2811–2822. doi:10.1113/JP276023.
- 489 Niño, O., Balague, N., Aragonés, D., Blasi, J., Alamo, J. M., Corral, L., et al. (2014). CD34+ Circulating Progenitor Cells  
490 after Different Training Programs. *International Journal of Sports Medicine* 36, 292–296. doi:10.1055/S-0034-1394394.
- 491 Povsic, T. J., Zhou, J., Adams, S. D., Bolognesi, M. P., Attarian, D. E., and Peterson, E. D. (2010). Aging is not associated  
492 with bone marrow-resident progenitor cell depletion. *Journals of Gerontology - Series A Biological Sciences and Medical*  
493 *Sciences* 65 A, 1042–1050. doi:10.1093/gerona/glq110.
- 494 Riebe, D., Franklin, B. A., Thompson, P. D., Garber, C. E., Whitfield, G. P., Magal, M., et al. (2015). Updating ACSM's  
495 recommendations for exercise preparticipation health screening. *Medicine and Science in Sports and Exercise* 47, 2473–  
496 2479. doi:10.1249/MSS.0000000000000664.

- 497 Ross, M. D., Malone, E. M., Simpson, R., Cranston, I., Ingram, L., Wright, G. P., et al. (2018). Lower resting and exercise-  
498 induced circulating angiogenic progenitors and angiogenic T cells in older men. *American Journal of Physiology - Heart*  
499 *and Circulatory Physiology* 314, H392–H402. doi:10.1152/ajpheart.00592.2017.
- 500 Sarto, P., Balducci, E., Balconi, G., Fiordaliso, F., Merlo, L., Tuzzato, G., et al. (2007). Effects of Exercise Training on  
501 Endothelial Progenitor Cells in Patients with Chronic Heart Failure. *Journal of Cardiac Failure* 13, 701–708. doi:  
502 10.1016/j.cardfail.2007.06.722.
- 503 Schlager, O., Giurgea, A., Schuhfried, O., Seidinger, D., Hammer, A., Gröger, M., et al. (2011). Exercise training increases  
504 endothelial progenitor cells and decreases asymmetric dimethylarginine in peripheral arterial disease: A randomized  
505 controlled trial. *Atherosclerosis* 217, 240–248. doi:10.1016/j.atherosclerosis.2011.03.018.
- 506 Sculthorpe, N.F., Herbert, P., Grace, F., 2017. One session of high-intensity interval training (HIIT) every 5 days, improves  
507 muscle power but not static balance in lifelong sedentary ageing men: A randomized controlled trial. *Medicine (Baltimore)*  
508 96, e6040. <https://doi.org/10.1097/MD.0000000000006040>
- 509 Sloth, M., Sloth, D., Overgaard, K., Dalgas, U., 2013. Effects of sprint interval training on VO<sub>2</sub>max and aerobic exercise  
510 performance: A systematic review and meta-analysis. *Scandinavian Journal of Medicine and Science in Sports* 23, e341-  
511 352. <https://doi.org/10.1111/sms.12092>
- 512 Sogaard, D., Baranowski, M., Larsen, S., Taulo Lund, M., Munk Scheuer, C., Vestergaard Abildskov, C., Greve Dideriksen,  
513 S., Dela, F., Wulff Helge, J., 2019. Muscle-Saturated Bioactive Lipids Are Increased with Aging and Influenced by High-  
514 Intensity Interval Training. *Int J Mol Sci* 20, E1240. <https://doi.org/10.3390/ijms20051240>
- 515 Sogaard, D., Lund, M.T., Scheuer, C.M., Dehlbaek, M.S., Dideriksen, S.G., Abildskov, C.V., Christensen, K.K.,  
516 Dohlmann, T.L., Larsen, S., Vigelsø, A.H., Dela, F., Helge, J.W., 2018. High-intensity interval training improves insulin  
517 sensitivity in older individuals. *Acta Physiologica (Oxf)* 222, e13009. <https://doi.org/10.1111/apha.13009>
- 518 Steiner, S., Niessner, A., Ziegler, S., Richter, B., Seidinger, D., Pleiner, J., et al. (2005). Endurance training increases the  
519 number of endothelial progenitor cells in patients with cardiovascular risk and coronary artery disease. *Atherosclerosis* 181,  
520 305–310. doi: 10.1016/j.atherosclerosis.2005.01.006.
- 521 Støren, Ø., Helgerud, J., Sæbø, M., Støa, E.M., Bratland-Sanda, S., Unhjem, R.J., Hoff, J., Wang, E., 2017. The Effect of  
522 Age on the V'O<sub>2</sub>max Response to High-Intensity Interval Training. *Med Sci Sports Exerc* 49, 78–85.  
523 <https://doi.org/10.1249/MSS.0000000000001070>
- 524 Thijssen, D. H. J., Vos, J. B., Verseyden, C., van Zonneveld, A. J., Smits, P., Sweep, F. C. G. J., et al. (2006).  
525 Haematopoietic stem cells and endothelial progenitor cells in healthy men: Effect of aging and training. *Aging Cell* 5, 495–  
526 503. doi:10.1111/j.1474-9726.2006.00242.x.
- 527 Tsai, H. H., Lin, C. P., Lin, Y. H., Hsu, C. C., and Wang, J. S. (2016). High-intensity Interval training enhances  
528 mobilization/functionality of endothelial progenitor cells and depressed shedding of vascular endothelial cells undergoing  
529 hypoxia. *European Journal of Applied Physiology* 116, 2375–2388. doi:10.1007/s00421-016-3490-z.
- 530 van Craenenbroeck, E. M., Frederix, G., Pattyn, N., Beckers, P., van Craenenbroeck, A. H., Gevaert, A., et al. (2015).  
531 Effects of aerobic interval training and continuous training on cellular markers of endothelial integrity in coronary artery  
532 disease: A SAINTEX-CAD substudy. *American Journal of Physiology - Heart and Circulatory Physiology* 309, H1876–  
533 H1882. doi:10.1152/ajpheart.00341.2015.
- 534 Vollaard, N.B.J., Metcalfe, R.S., Williams, S., 2017. Effect of Number of Sprints in an SIT Session on Change in V'O<sub>2</sub>max:  
535 A Meta-analysis. *Medicine and Science in Sports and Exercise* 49, 1147–1156.  
536 <https://doi.org/10.1249/MSS.0000000000001204>
- 537 Whyte, L.J., Gill, J.M.R., Cathcart, A.J., 2010. Effect of 2 weeks of sprint interval training on health-related outcomes in  
538 sedentary overweight/obese men. *Metabolism* 59, 1421–1428. <https://doi.org/10.1016/j.metabol.2010.01.002>



- 539 Xia, W. H., Li, J., Su, C., Yang, Z., Chen, L., Wu, F., et al. (2012). Physical exercise attenuates age-associated reduction  
540 in endothelium-reparative capacity of endothelial progenitor cells by increasing CXCR4/JAK-2 signaling in healthy men.  
541 *Aging Cell* 11, 111–119. doi:10.1111/j.1474-9726.2011.00758.x.
- 542 Yasar, Z., Dewhurst, S., and Hayes, L. D. (2019). Peak Power Output Is Similarly Recovered After Three- and Five-Days'  
543 Rest Following Sprint Interval Training in Young and Older Adults. *Sports* 7, 94-undefined. doi:10.3390/SPORTS7040094.
- 544 Zhang, X., Sarkar, K., Rey, S., Sebastian, R., Andrikopoulou, E., Marti, G. P., et al. (2011). Aging impairs the mobilization  
545 and homing of bone marrow-derived angiogenic cells to burn wounds. *Journal of Molecular Medicine* 89, 985–995.  
546 doi:10.1007/s00109-011-0754-2.
- 547